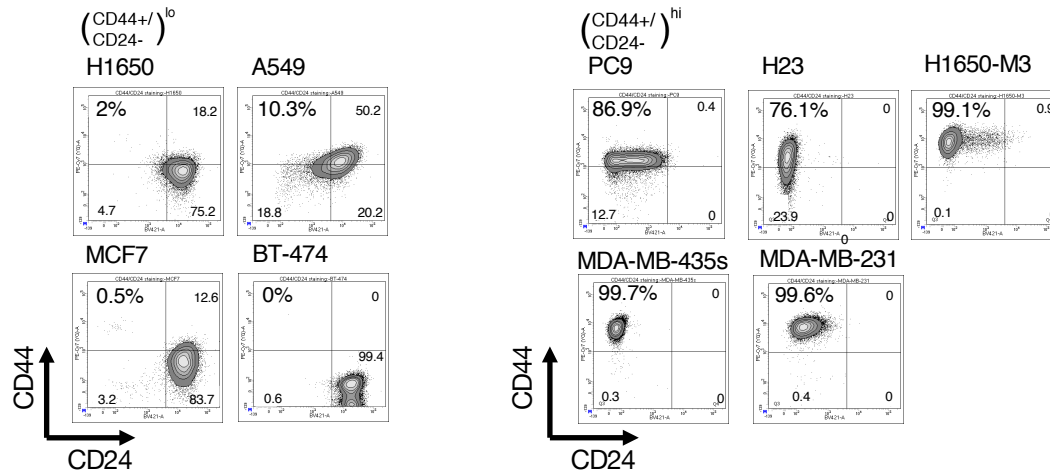
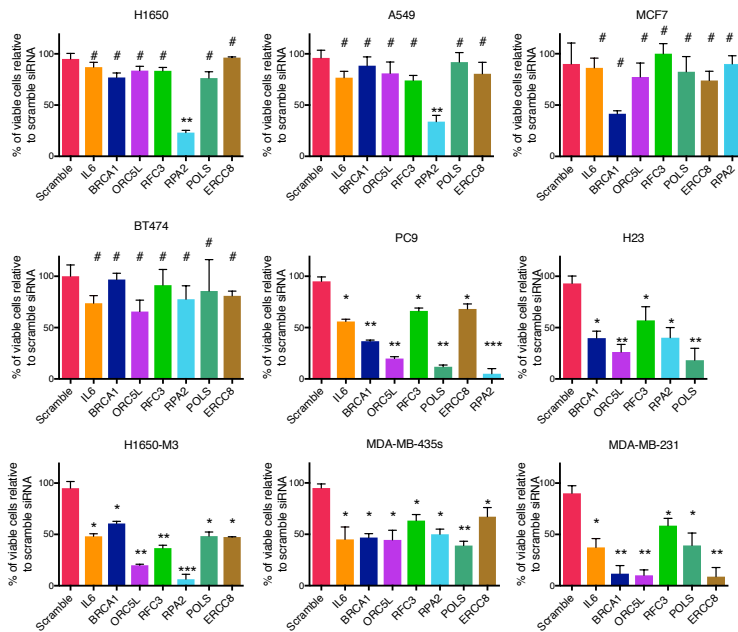
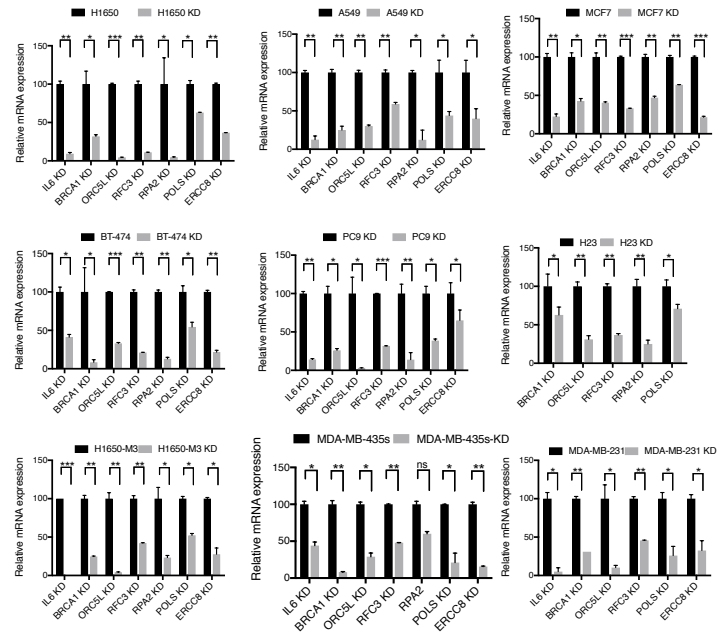


A**B****C****Figure 1—figure supplement 2.**

Validation of shRNA screen hits in tumor derived cell lines characterized by low (H1650, A549, MCF7, BT-474) and high (PC9, NCI-H23, H1650-M3, MDA-MB-435s, MDA-MB-231) content of CD44⁺/CD24⁻ cells.

A. FACS profile of multiple cancer derived cell lines used in validation of the shRNA screen hits. Cells were stained with antibodies against cell surface marker CD44 and CD24 and analyzed with FACS.

B. The charts represent the percentage of viable cells after 5 days upon transfection with the indicated siRNA oligonucleotides compared to scramble siRNA transfected control cells. Each bar represents mean ± SD of 2 independent experiments each conducted in eight-replicates (n=16).

C. Efficiency of knock down upon transfection with the indicated siRNA oligonucleotides and compared to scramble siRNA transfected control cells. Cells were collected 3 days post transfection and analyzed for expression of the indicated mRNA by RT-qPCR. Each bar represents mean ± SD of 3 replicates.

p-value * < 0.05, ** < 0.005, *** < 0.0005, unpaired t-test. Non significant differences are shown by the symbol ‘#’ or ‘ns’.