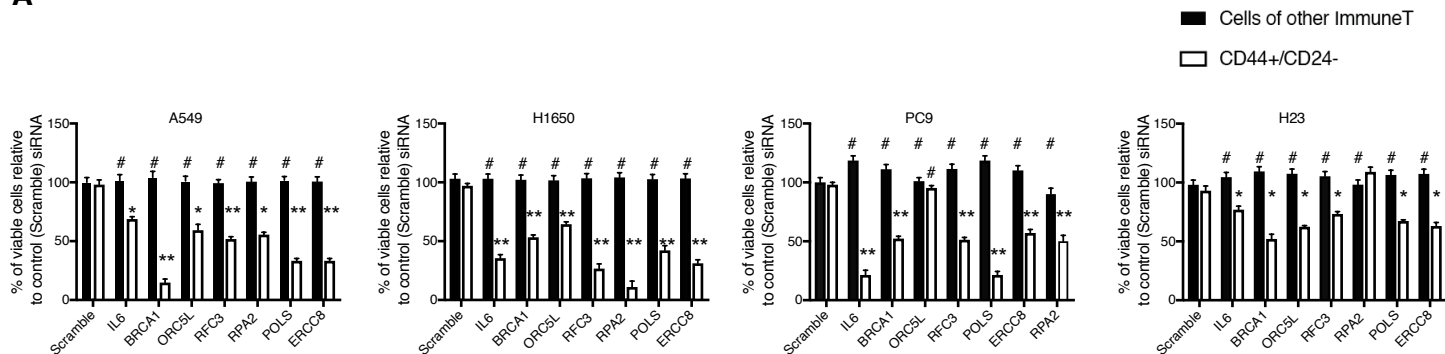
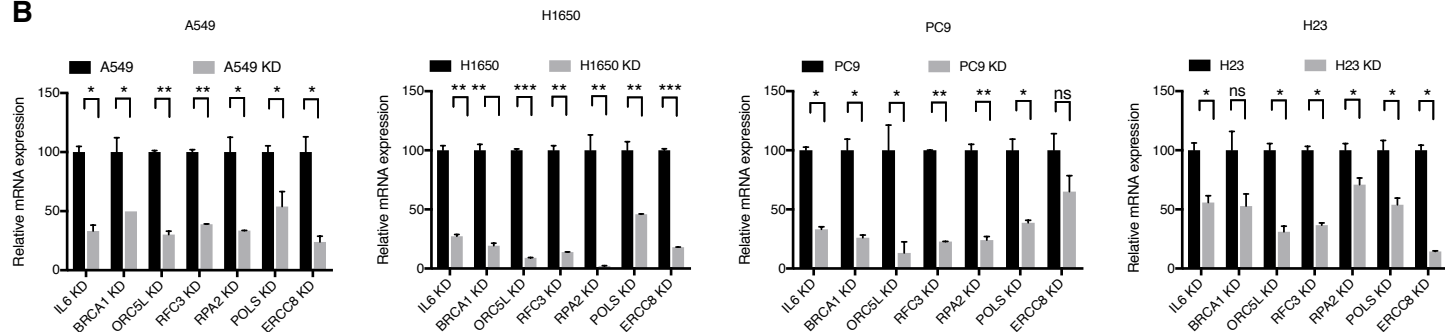


A**B****Figure 1—figure supplement 3.****Validation of shRNA screen hits in tumor derived cell lines FACS sorted based on surface expression of CD44 and CD24.**

A. The charts represent the percentage of viable CD44+/CD24- cells and cells of other immunotypes upon transfection with the indicated siRNA oligonucleotides relative to control (scramble siRNA). Each bar represents mean \pm SD of 3 technical replicates from 2 independent experiments. 10,000 cells were analyzed by FACS for each replicates of each sample.

B. Efficiency of knock down upon transfection with the indicated siRNA oligonucleotides and compared to scramble siRNA transfected control cells. Cells were collected 3 days post transfection and analyzed for expression of the indicated mRNA. Each bar represents mean \pm SD of 3 replicates.

p-value * <0.05 , ** <0.005 , *** <0.0005 , unpaired t-test. Non significant differences are shown by the symbol ‘#’ or ‘ns’.