

A

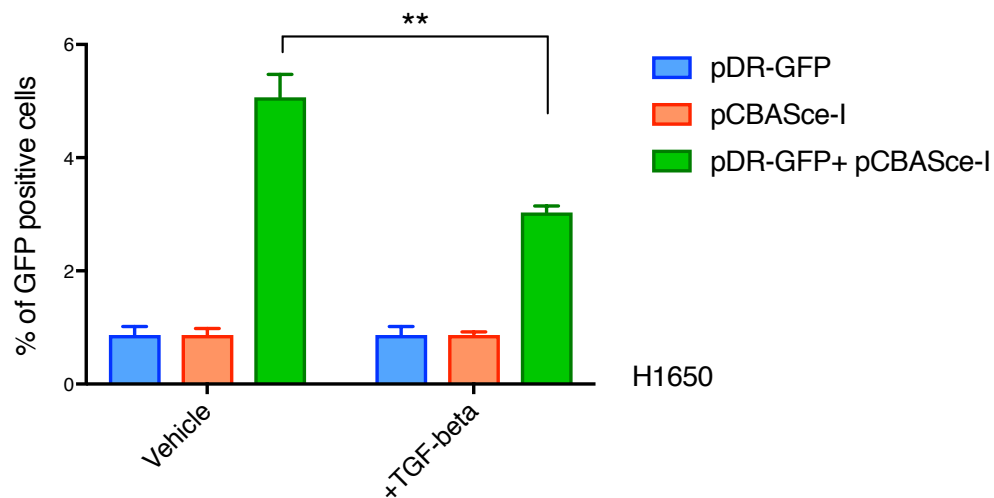


Figure 4—figure supplement 2.

TGF-beta reduces the efficiency of homologous recombination in a DR-GFP assay in H1650 cells.

A. The chart represents the percentage of GFP +ve cells upon transfection with pDR-GFP or pCBASce-I or both, under vehicle or TGF-beta treatment. Each bar represents mean \pm SD of 3 replicates from two independent experiments. (p-value ** < 0.005, unpaired t-test with desired FDR 1%)