

## Fun30 Gal4-AD

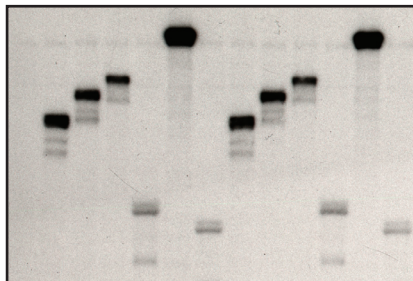
Ø 1-420 1-500 1-555 1-188 FL 29-188  
 1-420 1-500 1-555 1-188 FL 29-188

• • • • • •

• • • • • •

lexA-BD

BD Dpb11 BRCT1+2



AD Fun30 FL

AD Fun30 1-420

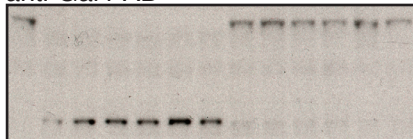
AD Fun30 1-500

AD Fun30 1-555

AD Fun30 1-188

AD Fun30 29-188

anti-Gal4-AD



BD Dpb11 BRCT 1+2

BD

anti-lexA-BD