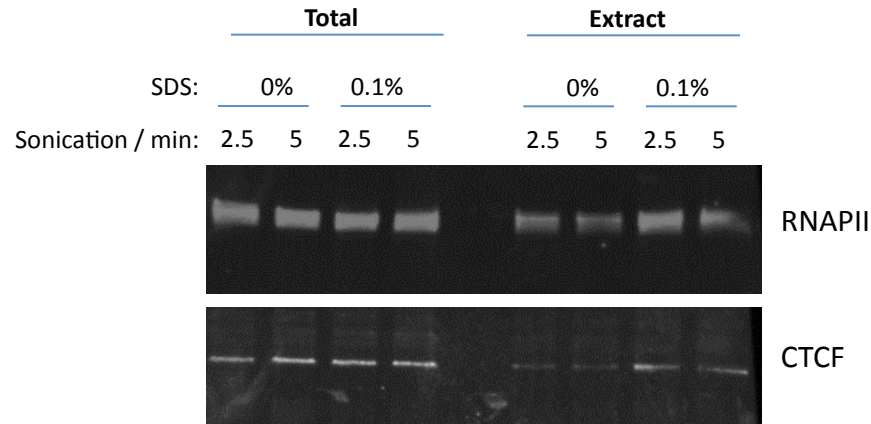


A Protein extraction under native conditions



B Testing for redistribution of CTCF to DNA probes with and without the motif

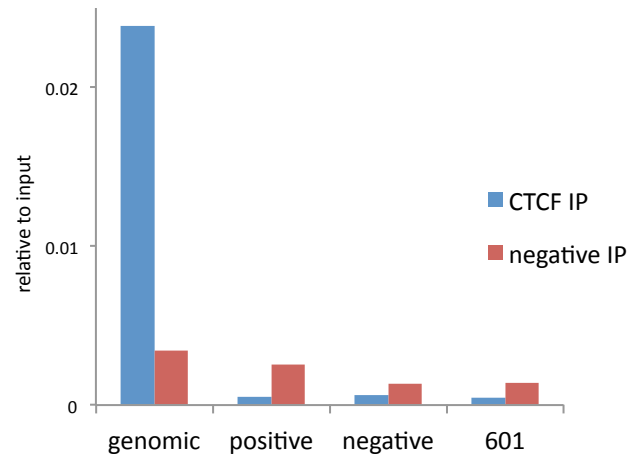


Figure 7—figure supplement 1. A modified native ChIP protocol allows complete protein extraction.

(A) Western blotting to test the extraction efficiency of RNA polymerase II (RNAPII) and CTCF under native conditions with varying SDS and sonication conditions. (B) To test for potential redistribution of CTCF under native conditions, extracts were incubated with 95-bp DNA probes with a high scoring motif (positive) or a shuffled sequence (negative) of the 601 nucleosome positioning sequence at 1000 copies per cell. Following the ChIP and DNA extraction, quantitative PCR was used to test for CTCF binding to the native peak in the genome (genomic) or to the DNA probes.