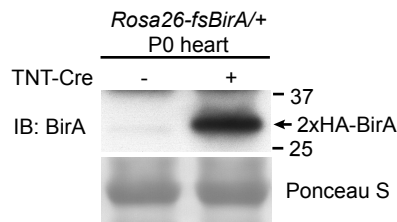
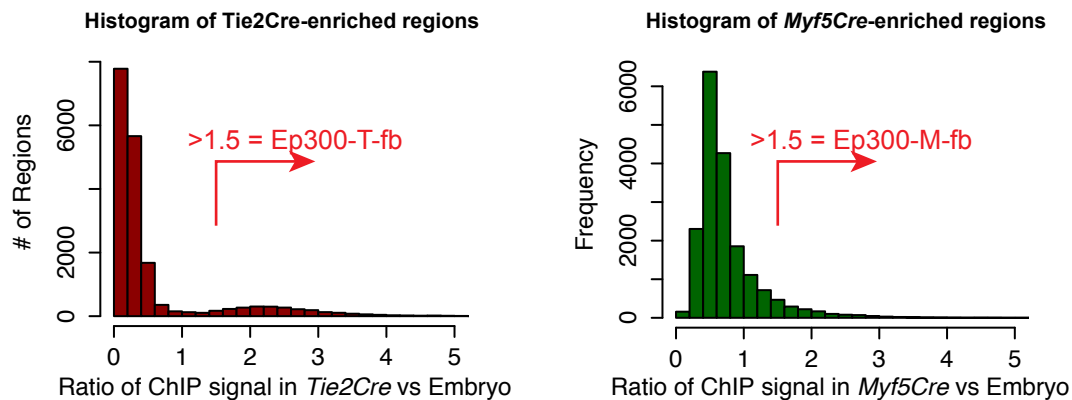
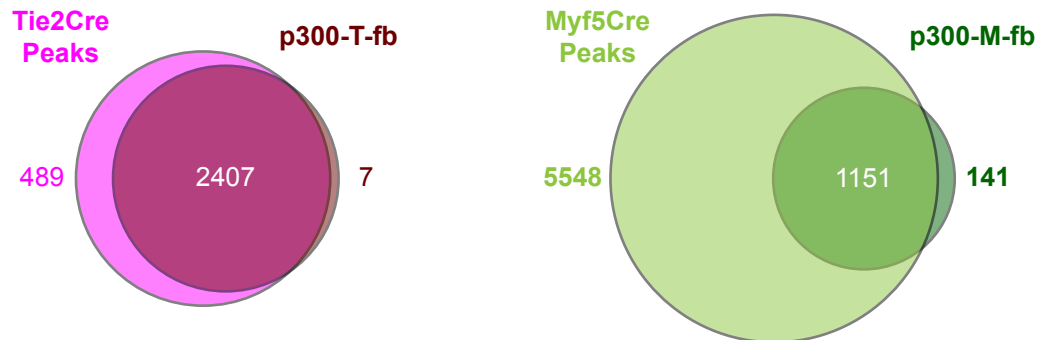


**A****B****C**

**Figure 4 -- figure supplement 1. Cre-dependent Ep300 bioChIP-seq. A.** Cre-dependent expression of BirA. Heart with or without cardiac-specific *TNTCre* was immunoblotted for expression of BirA from the *Rosa26<sup>fsBirA</sup>* allele. **B.** Distribution of Ep300<sup>fb</sup> bioChIP-seq signal when driven by *Tie2Cre* or *Myf5Cre*. Regions with p300 peaks called in samples from any of the three Cre drivers were scored for their EC- or muscle- enriched signal by calculating ratio of the region's signal in *Tie2Cre* or *Myf5Cre* bioChIP-seq to its signal with ubiquitous Ep300 bioChIP-seq (*EllaCre*). The *Tie2Cre*-enrichment score showed a bimodal distribution with a small peak at values greater than 1.5. A value of greater than 1.5 similarly was used to define *Myf5Cre*-enriched regions. **C.** Relationship of *Tie2Cre*-enriched (Ep300-T-fb) and *Myf5Cre*-enriched (Ep300-M-fb) regions to peaks called from *Tie2Cre* or *Myf5Cre* samples alone.