

Ep300-T-fb				Ep300-M-fb			
	-ln P -value	% of Targets	Best Match		-ln P -value	% of Targets	Best Match
	879	48.7	GATA		1049	68.0	Ebox
	855	57.0	ETS		111	32.9	TEAD
	199	19.0	Sox		58	31.5	PBX:Homeo
	149	14.7	ETS:Ebox		53	21.6	Ebox
	105	16.9	Fox		51	5.7	Ebox
	84	15.9	KLF		50	28.2	Nuc. Recept.
	83	11.8	AP1		41	27.7	Homeo
	69	3.9	Mef2		35	3.2	Hox
	61	10.3	ATF		32	3.4	Mef2
	46	16.5	Ebox		32	8.6	Meis1

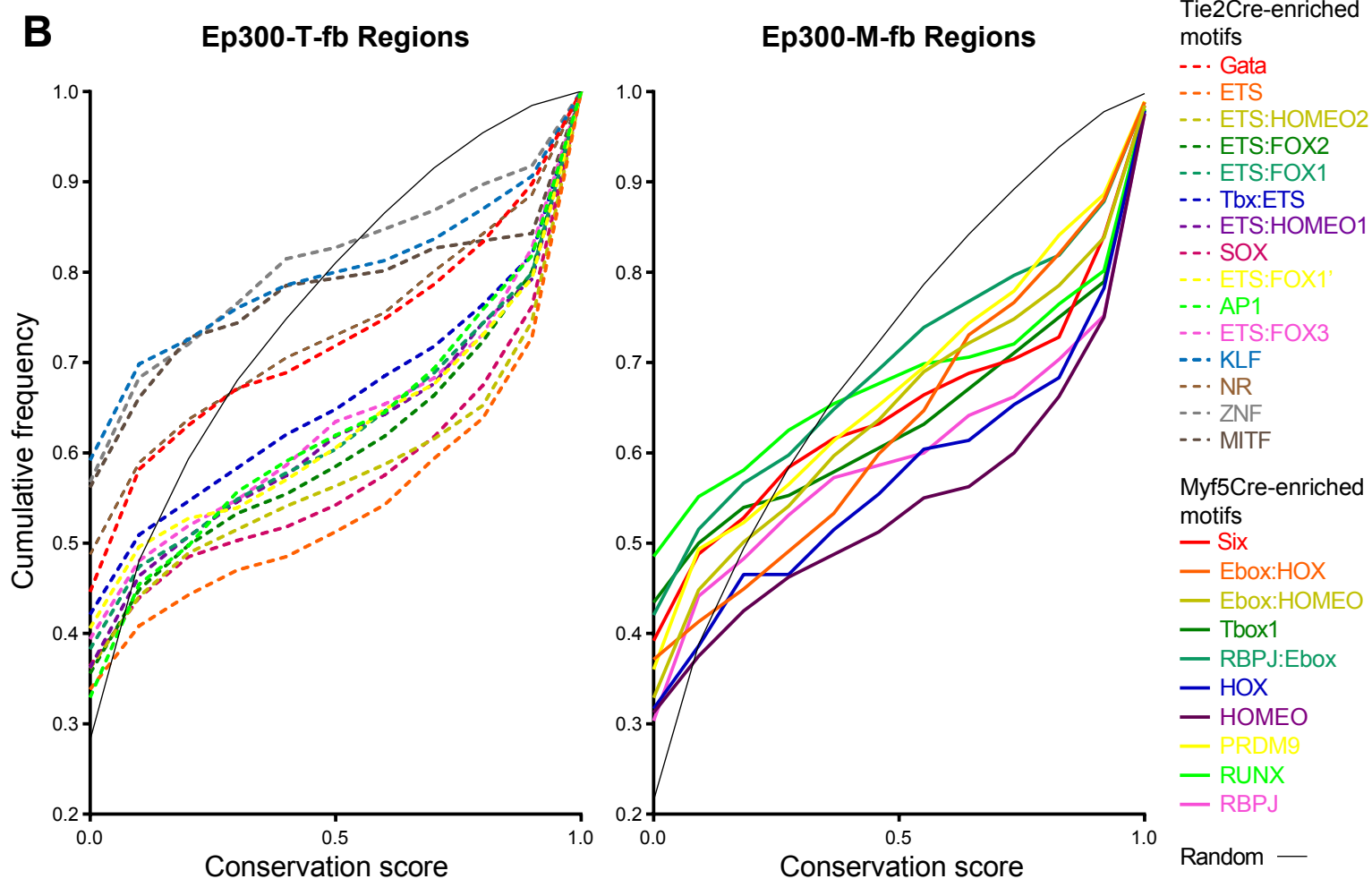


Fig. 6 -- figure supplement 1. Motifs with enriched p300 occupancy in *Tie2Cre* or *Myf5Cre* embryo samples. A. De novo motif discovery. The top 10 discovered motifs are shown, with the significance P-value, percent of regions containing the motif, and the best matching known motif class. **B.** Conservation of *Tie2Cre*-enriched motifs (dashed lines) or *Myf5Cre*-enriched motifs (solid lines) within 100 bp of Ep300-T-fb or Ep300-M-fb peak summits. The distribution of conservation scores for each indicated motif is shown as a cumulative frequency plot. Random indicates randomly sampled 12 nt regions from within the Ep300-T-fb or Ep300-M-fb regions.