

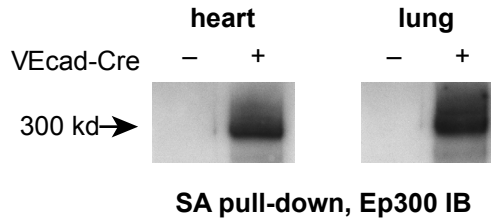
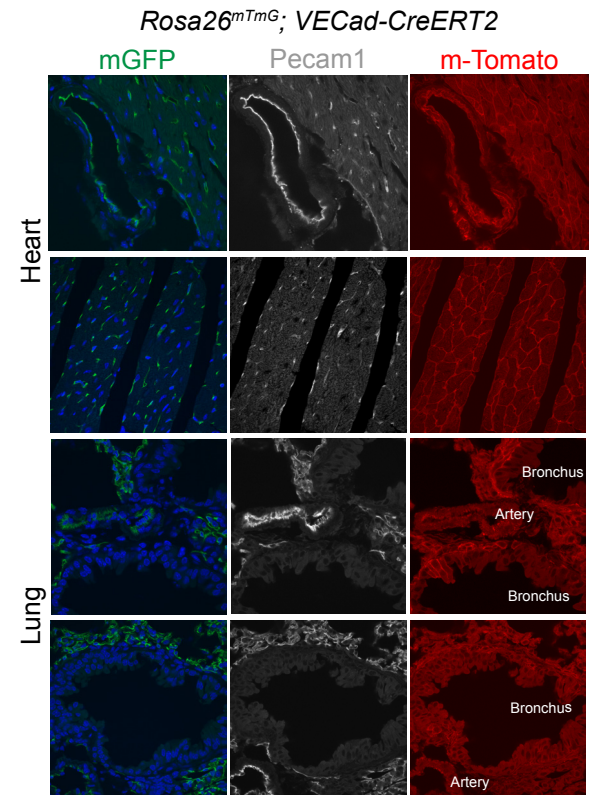
A**B**

Fig. 7 -- figure supplement 2. VECad-CreERT2 activation of Ep300 biotinylation.
A. VECad-CreERT2 activated Ep300 biotinylation by *Rosa26^{fsBirA}*, permitting its pull-down on streptavidin (SA) beads. **B.** EC-selective activation of the *Rosa26^{mTmG}* Cre reporter allele by VECad-CreERT2. Tamoxifen was administered at P1 and P2, and tissues were analyzed at 6 weeks of age.