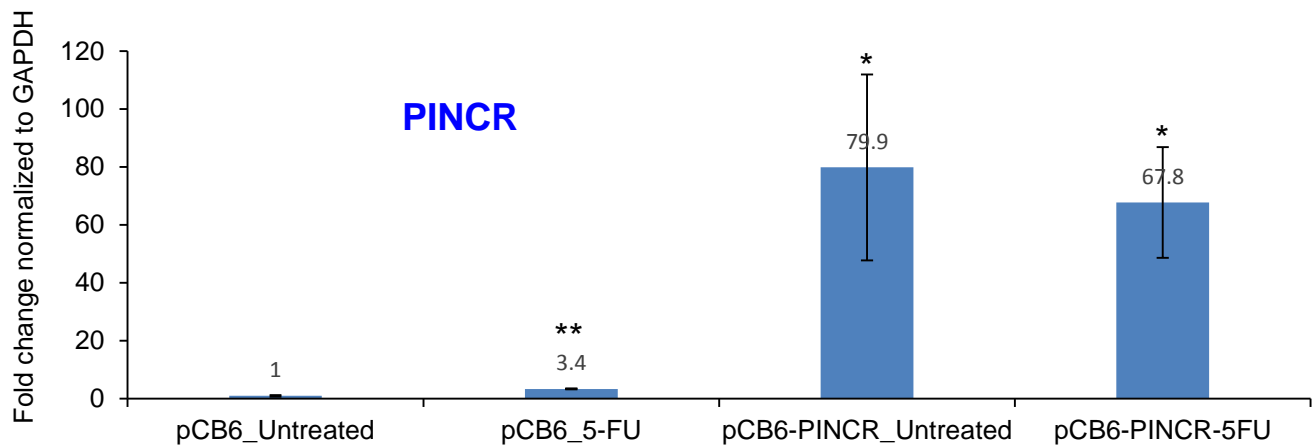
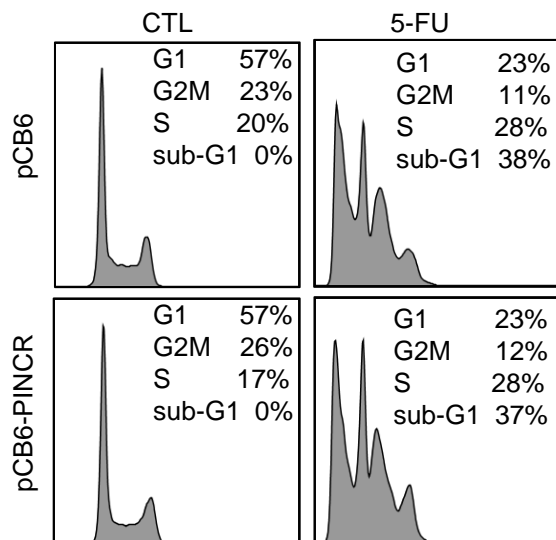


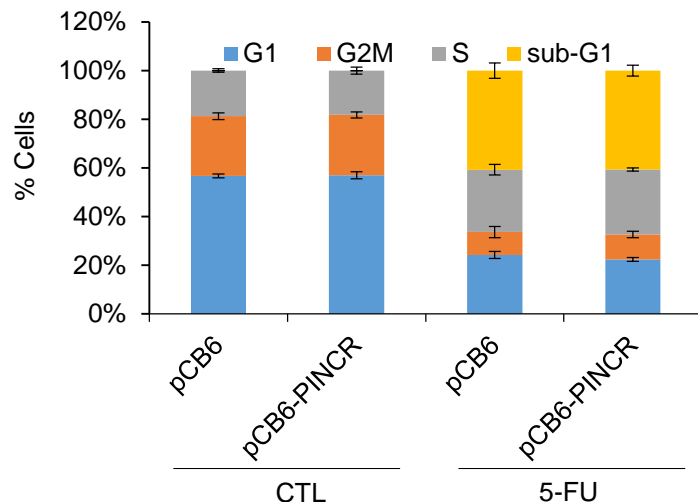
A



B



C



**Figure 3 – figure supplement 6. Over-expression of *PINCR* has no significant effect on cell cycle.**

HCT116 cells were transfected with pCB6 or pCB6-*PINCR* for 24 hr and then left untreated cells or treated with 5-FU for 48 hr. *PINCR* levels were measured by qRT-PCR (A) and the effect on cell cycle was determined by PI-staining and FACS analysis (B, C). Raw cell cycle profiles from a representative experiment are shown in (B). Cell cycle profiles from 3 independent experiments are shown in (C). Error bars represent SD from three experiments. \* $p < 0.05$ ; \*\* $p < 0.005$ .