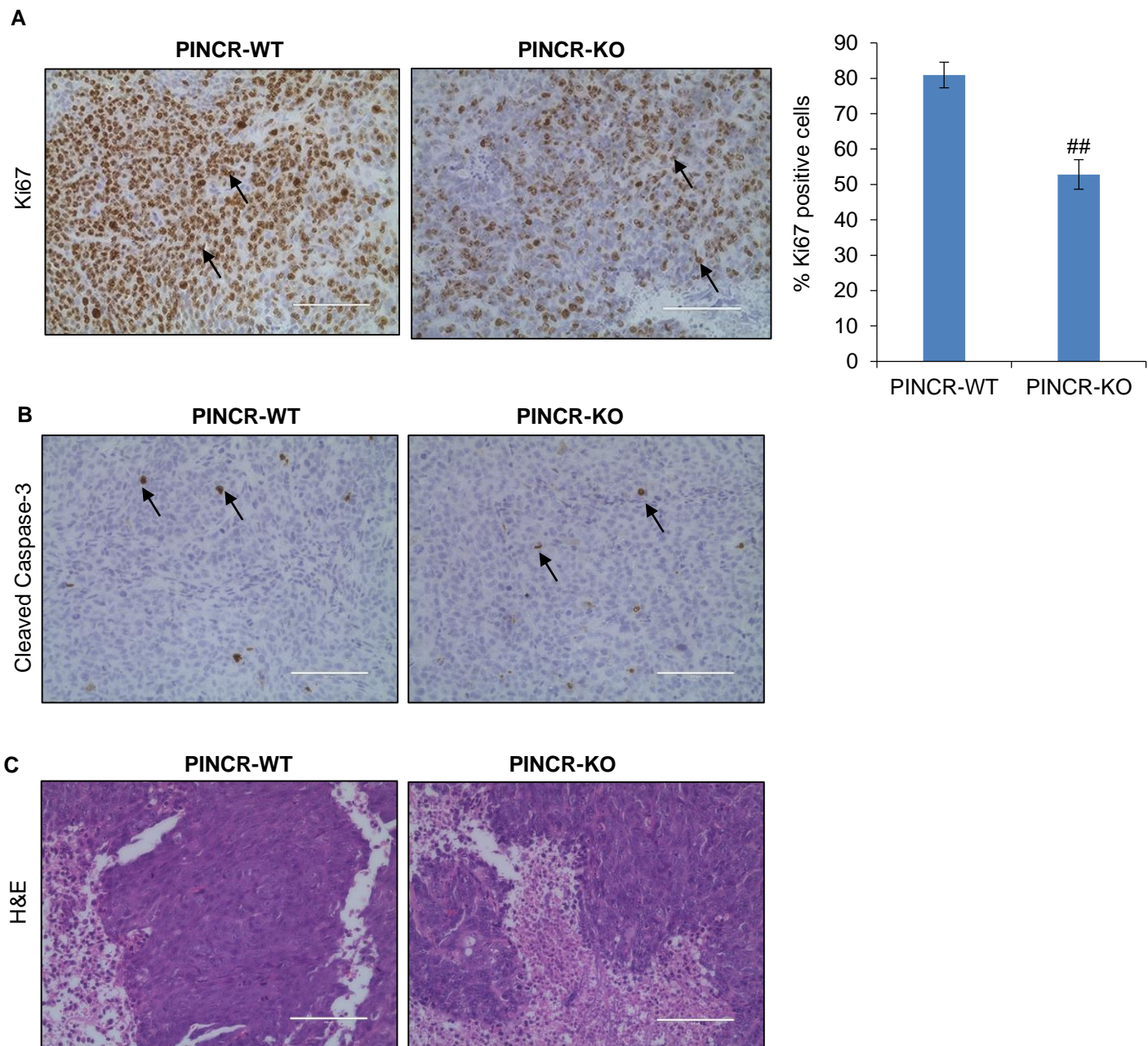


Figure 3 – figure supplement 7



**Figure 3 – figure supplement 7.** Immunohistochemical staining of the *PINCR*-WT and *PINCR*-KO tumors for the proliferation marker Ki67 (A), apoptosis marker Cleaved Caspase-3 (B) and H&E staining (C). Arrows indicate Ki67 (A) or Cleaved Caspase-3 (B) positive cells. Error bars represent SD from four biological replicates. ## $p<0.001$