

Fig 3 – Supplement 5: Streptavidin does not affect CMG unwinding of non-biotinylated substrate

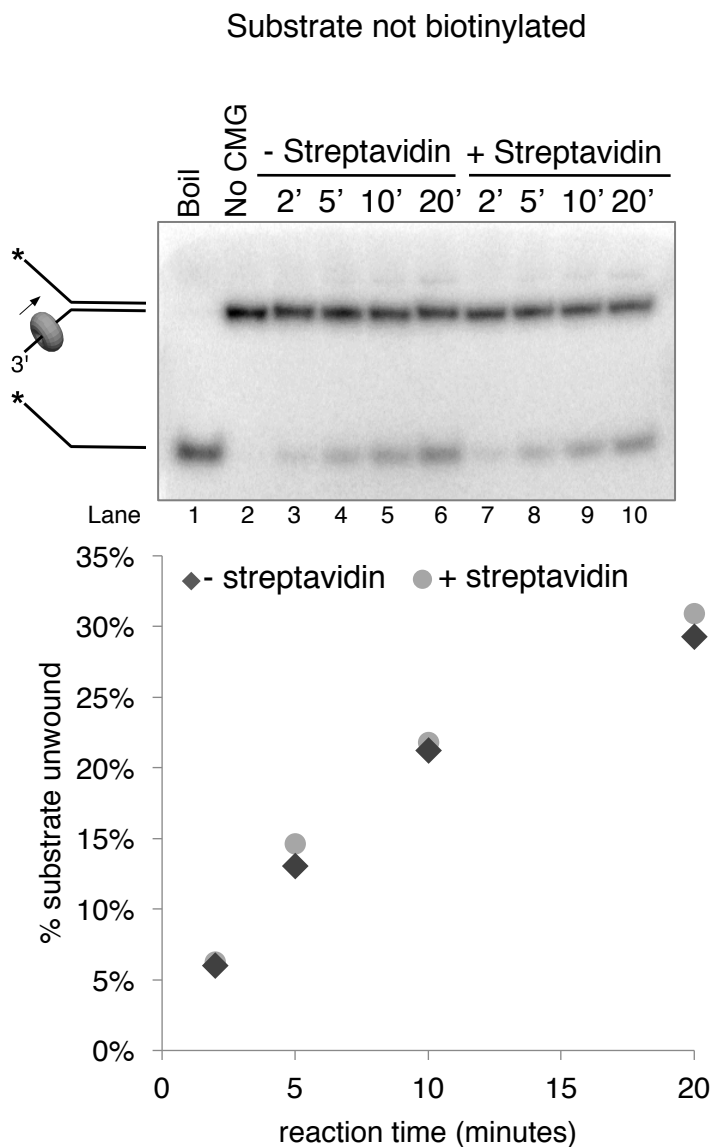


Figure 3 – Supplement 5: **Streptavidin does not affect CMG unwinding of a non-biotinylated substrate.**

As a control to determine whether addition of streptavidin affects CMG unwinding of a non-biotinylated substrate (i.e. non-specific inhibition of unwinding), we compared CMG unwinding of a non-biotinylated substrate in the absence (lanes 3-6) and presence (lanes 7-10) of streptavidin. Reactions conditions were identical to those in Figure 3 – Supplement 2 except for the addition of 2 $\mu\text{g/ml}$ (final concentration) streptavidin to the reaction in lanes 7-10; the total reaction volume was 60 μl and 12 μl time points were taken over a time course out to 20'. As shown in the graph at bottom, the amount of substrate unwound was identical in the absence and presence of streptavidin when the substrate was not biotinylated.