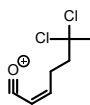
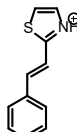


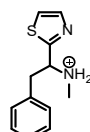
ExactMass: 134.0964



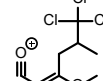
ExactMass: 179.0025



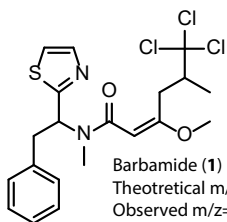
ExactMass: 188.0528



ExactMass: 219.0950



Exact Mass: 242.9741



Barbamide (1) [M+H]  
Theoretical m/z= 461.0619  
Observed m/z= 461.0624

134.0969

143.0261

171.0202

179.0026

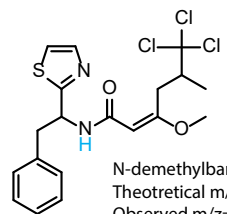
188.0529

206.9975

219.0968

242.9753

1876\_023A1\_RA1\_01\_14735.d: +MS2(461.0624), 16.7-41.8eV, 6.4min #2716



N-demethylbarbamide (2) [M+H]  
Theoretical m/z= 447.0462  
Observed m/z= 447.0463

143.0256

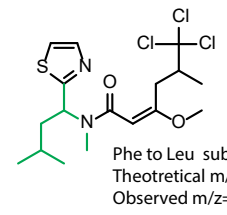
179.0021

188.0531

205.0799

242.9741

1610\_006A8\_GA8\_01\_13008.d: +MS2(447.0463), 16.4-41.1eV, 5.7min #2294



Phe to Leu substitution (3) [M+H]  
Theoretical m/z= 427.0775  
Observed m/z= 427.0778

143.0260

154.0670

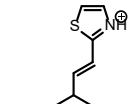
179.0013

185.1096

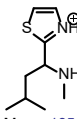
206.9950

242.9722

Exact Mass: 185.1107



Exact Mass: 154.0685



100 120 140 160 180 200 220 240 260 m/z