

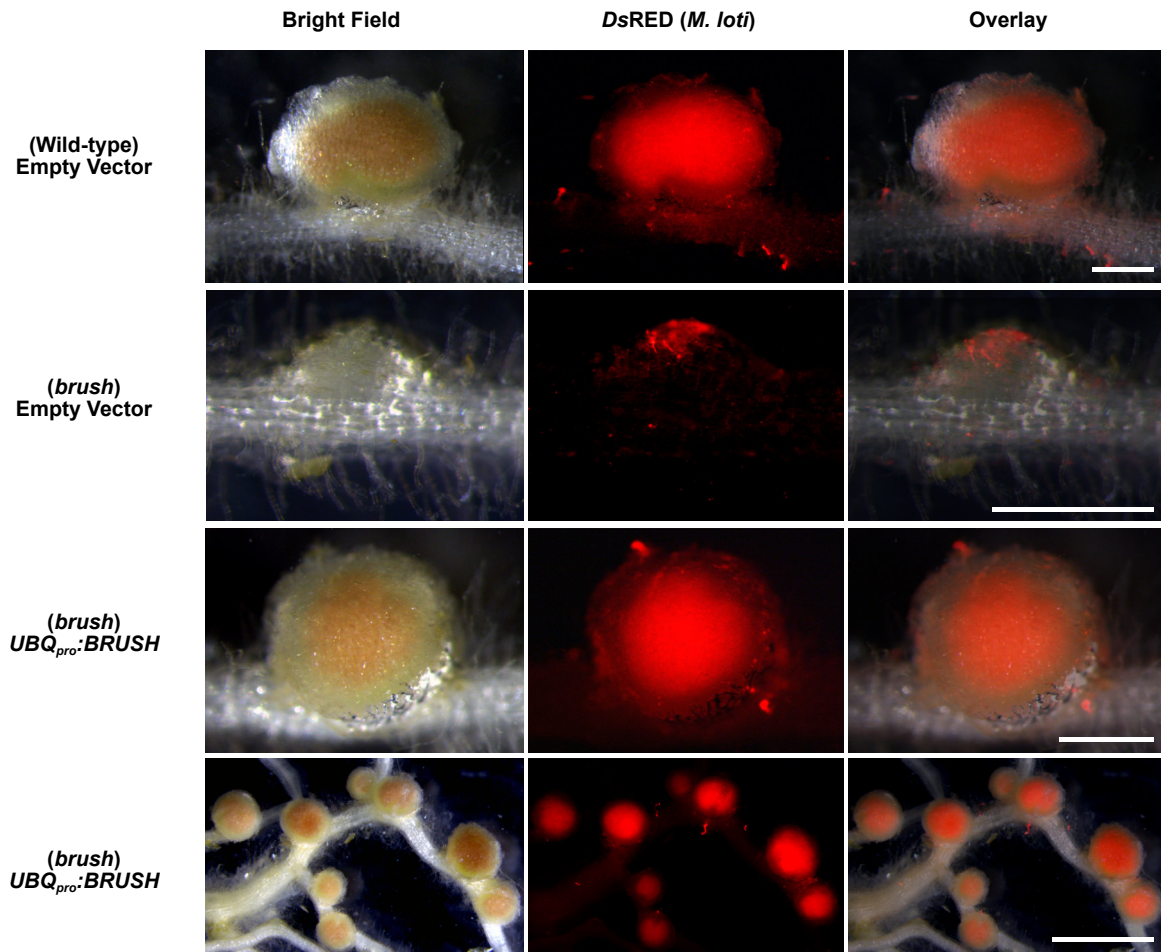
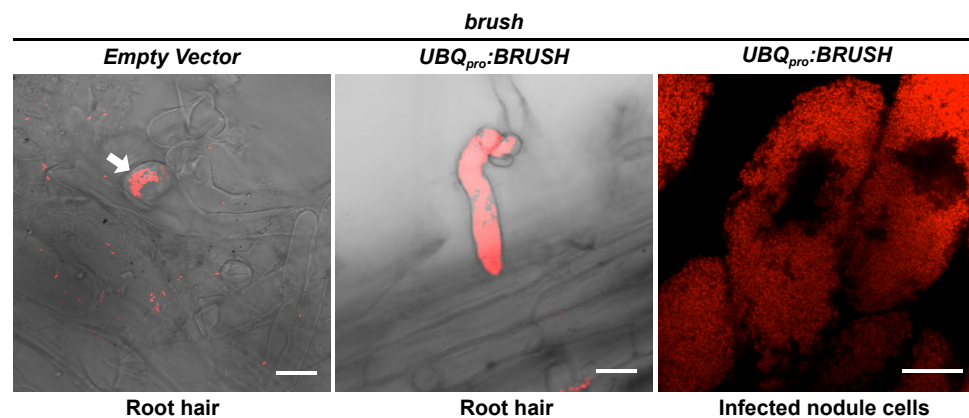
A**B**

Figure 2-figure supplement 2. Complementation of *brush* by overexpression of *BRUSH*. (A) Nodulation complementation assay of *brush* by hairy root transformation of an empty vector control or *UBQ_{pro}:BRUSH_{genomic}* construct relative to wild type. Infected nodules were observed in *brush* roots constitutively expressing the *BRUSH* genomic sequence. Shown are bright field images of roots and DsRED fluorescence of rhizobia. (B) Rhizobia remain entrapped in infection pockets in *brush* root hairs (left image, arrow). Overexpression of *BRUSH* restores infection of root hairs (middle) leading to infected nodule cells (right). The root hair images are composites of bright field and DsRED fluorescence. Plants with hairy roots were sown in Weck jars, cultivated at 26°C, and inoculated with *M. loti* expressing DsRed. Roots were analyzed four weeks after inoculation. Scale bars represent 0.5 mm in the top three panels of (A), lower panel 2 mm. Scale bars in (B) represent 15 µm.