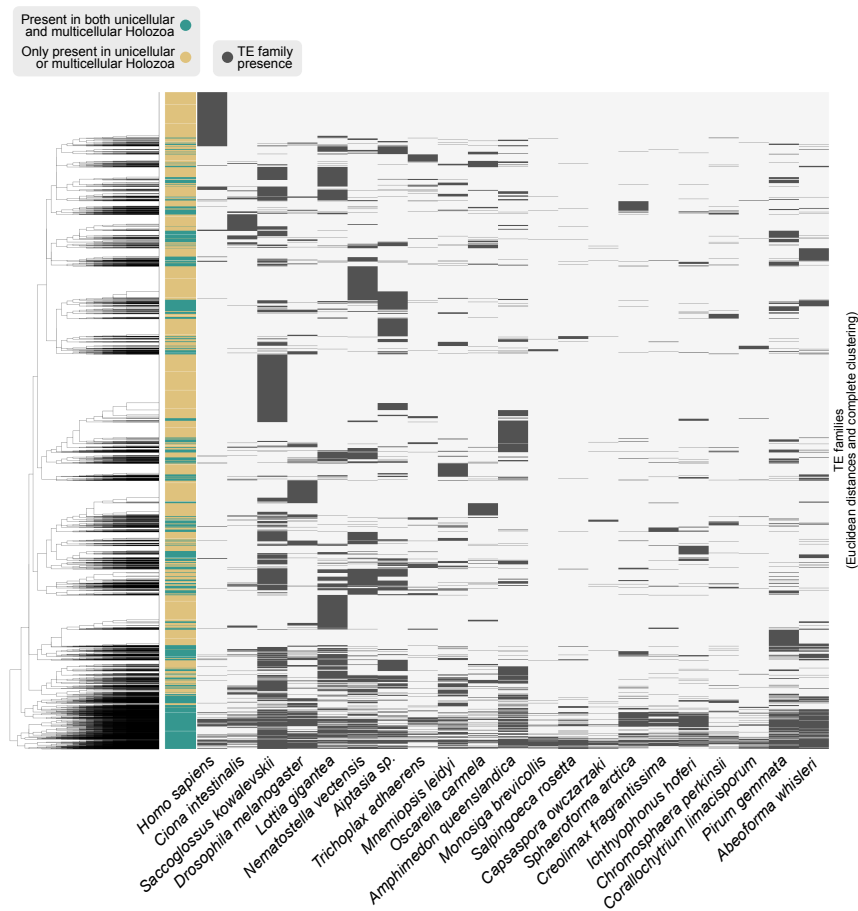


Figure 3-Supplement 2

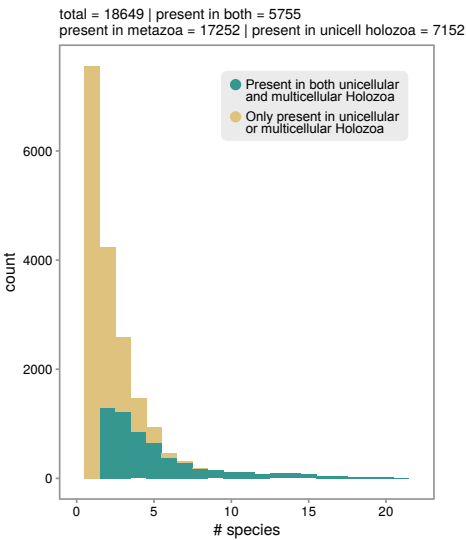
A. Shared TE families across Holozoa



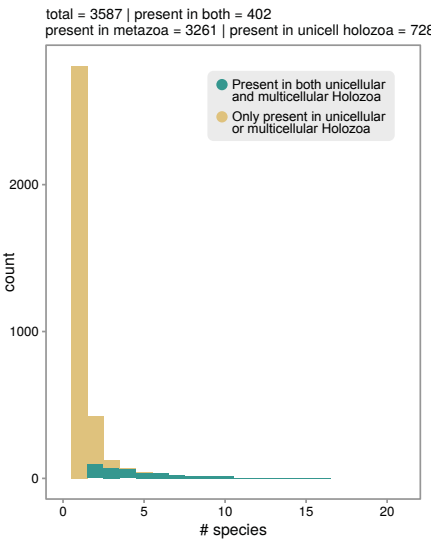
B. TE families present in >2 holozoan species (only families accounting for 25% of TE copies)

# species	TE family	present in Metazoa	present in unicellular Holozoa	Present in both
6	Daphne-18_HM	TRUE	TRUE	TRUE
6	IMPB_01	TRUE	TRUE	TRUE
5	CR1-79_HM	TRUE	TRUE	TRUE
5	Ginger1-1_AC	TRUE	TRUE	TRUE
4	Ag-Jock-1	TRUE	TRUE	TRUE
4	Gypsy-24_DEI-I	TRUE	TRUE	TRUE
4	Novosib-6_CR	TRUE	TRUE	TRUE
4	Penelope-1_DR	TRUE	TRUE	TRUE
4	RTAg4	TRUE	TRUE	TRUE
4	TART_DV	TRUE	TRUE	TRUE
3	Coprina_Cc1	TRUE	TRUE	TRUE
3	hAT-N4_ALy	TRUE	TRUE	TRUE
3	R5-1_SM	TRUE	TRUE	TRUE
3	REP-4_PBa	TRUE	TRUE	TRUE
3	Sola1-1_AC	TRUE	TRUE	TRUE
3	Sola3-1_BF	TRUE	TRUE	TRUE
3	EnSpm-5_HM	TRUE	FALSE	FALSE
2	DNA2-5_DR	TRUE	TRUE	TRUE
2	DNA8-5_DR	TRUE	TRUE	TRUE
2	EnSpm-34_SBi	TRUE	TRUE	TRUE
2	hAT-N144_DR	TRUE	TRUE	TRUE
2	Penelope-13_HM	TRUE	TRUE	TRUE
2	Polinton-2A_NV	TRUE	TRUE	TRUE
2	Polinton-2_HM	TRUE	TRUE	TRUE
2	Polinton-8_NVi	TRUE	TRUE	TRUE
2	DNA-N4_DR	FALSE	TRUE	FALSE
2	ENSPM-6_DR	TRUE	FALSE	FALSE
2	Gypsy-20_CSa-I	TRUE	FALSE	FALSE
2	Kolobok-1_AQu	TRUE	FALSE	FALSE
2	Kolobok-3_Apical	TRUE	FALSE	FALSE

C. Distribution of TE family presence per species (all families)



D. Distribution of TE family presence per species (only families accounting for 75% of TE copies)



E. Distribution of TE family presence per species (only families accounting for 25% of TE copies)

