

Fig 1-S6

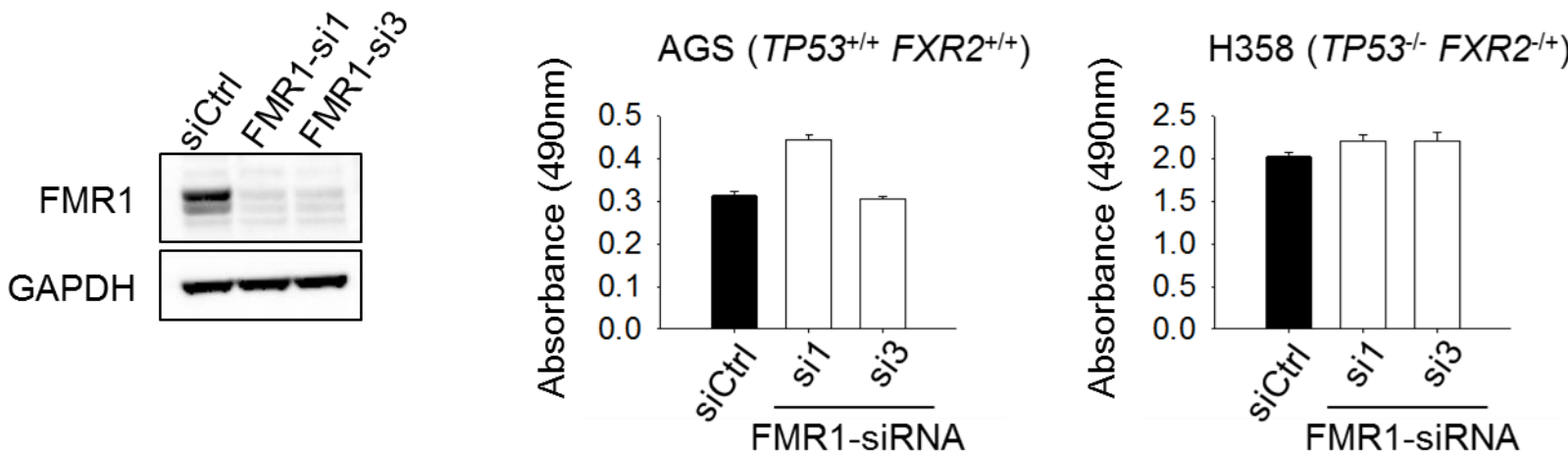


Figure 1–Figure Supplement 6. The effect of FMR1 knockdown on cancer cell proliferation. Left, siRNA-mediated FMR1 expression silence in H358 cells. Right, cell proliferation rate of H358 ($TP53/FXR2$ co-deletion) or AGS (copy number normal) cells upon FMR1 knockdown was detected by MTS assay. The cell proliferation rate in MTS was determined by measuring absorbance at 490nm (Y axis). Data represent the mean \pm s.d. of three independent experiments.