

Fig 6-S3

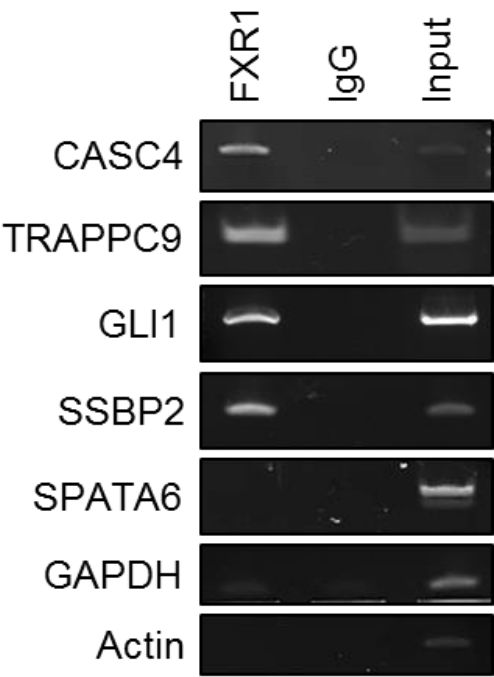


Figure 6–Figure Supplement 3. FXR1 binding to the target genes mRNA.
Immunoprecipitation (IP) complex by FXR1 antibody or IgG pull down from H358 cells are subjected to RT-PCR using the target gene specific primers (listed in Supplementary Information) to detect the precipitated mRNAs. The PCR products are detected by electrophoresis in agarose gels and stained with ethidium bromide, visualized by ChemiDoc. The non-target genes *GAPDH*, *Actin*, and *SPATA6* serve as the negative controls.