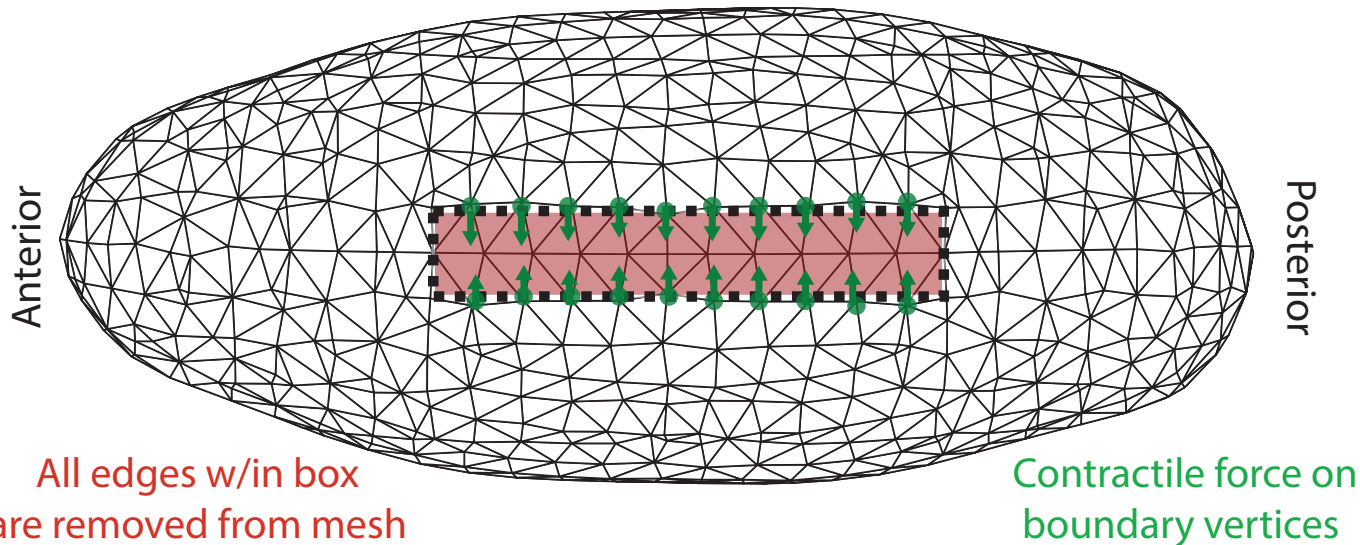
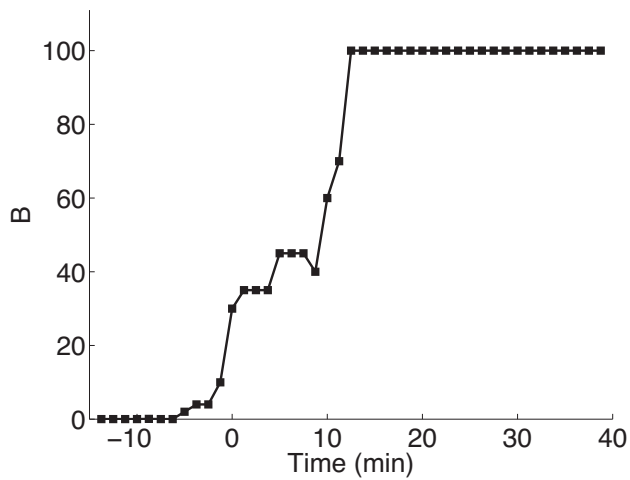


a

'Cut' model for ventral furrow formation



b



c

$$\partial_a^2 v_b(x) + B(t) \partial_b [\partial_a v_a(x)]$$

$$= \beta \partial_b m_{basal}(x) + \alpha \partial_a m_{ab, apical}(x)$$

Model parameters:

$B(t)$: Time dependent, but not space dependent. Dimensionless
 $B(35min) = 100, (56, 25000)$

$\alpha = 1, (0.6, 3.7), \beta = 50, (11.5, 80.3)$:
 Conversion factors, in arbitrary units
 no spatiotemporal dependence.