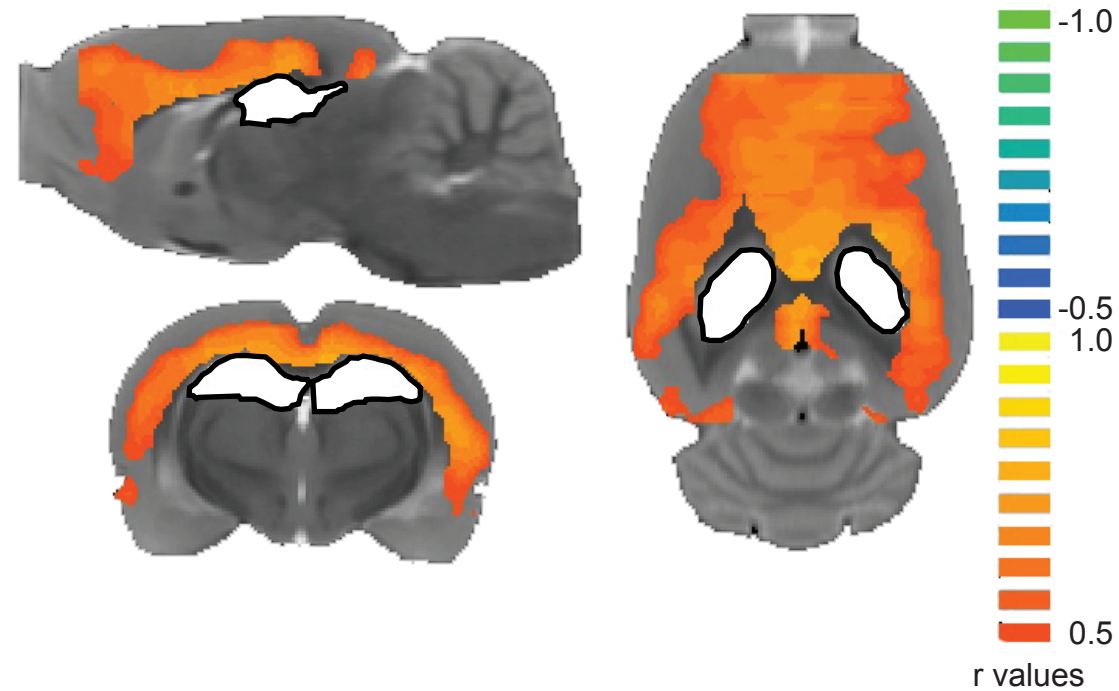


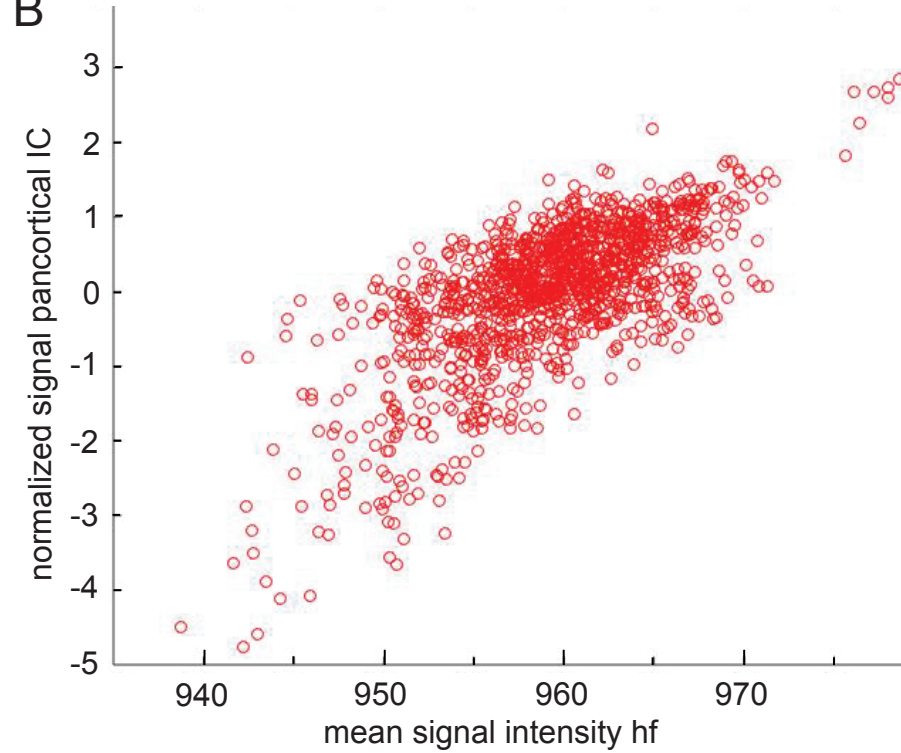
Figure 6 Supplement 2

A



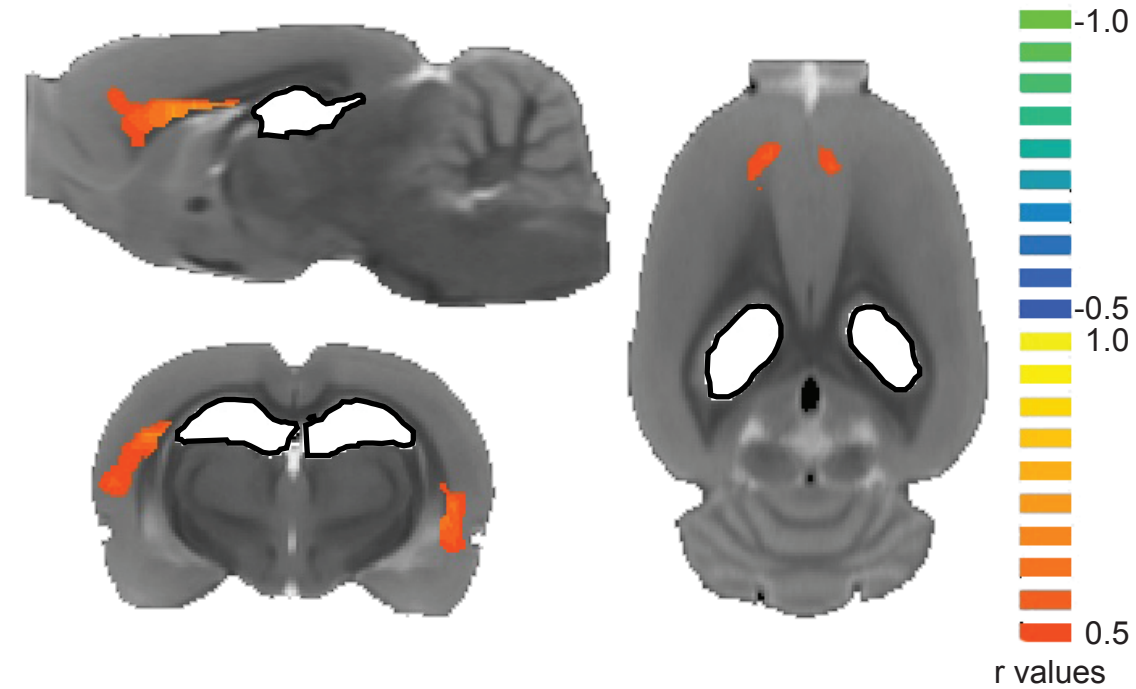
slow wave activity

B



persistent activity

C



**Figure 6 Supplement 2. Seed-based correlation analysis originating from hippocampal formation (hf).** (A) Signal correlation between hippocampal ROI (white with black outline) and cortex in a representative animal during slow wave activity (isoflurane anesthesia). (B) Correlation between average signal in hf and the pan-cortical independent component (IC) from this animal's ICA (pearson correlation coefficient,  $r=0.701$ ,  $P<0.001$ ). (C) Signal correlation between hippocampal ROI and cortex in the same animal during persistent activity (medetomidine sedation) reveals activation in the prefrontal cortex to be correlated with the hippocampal seed.