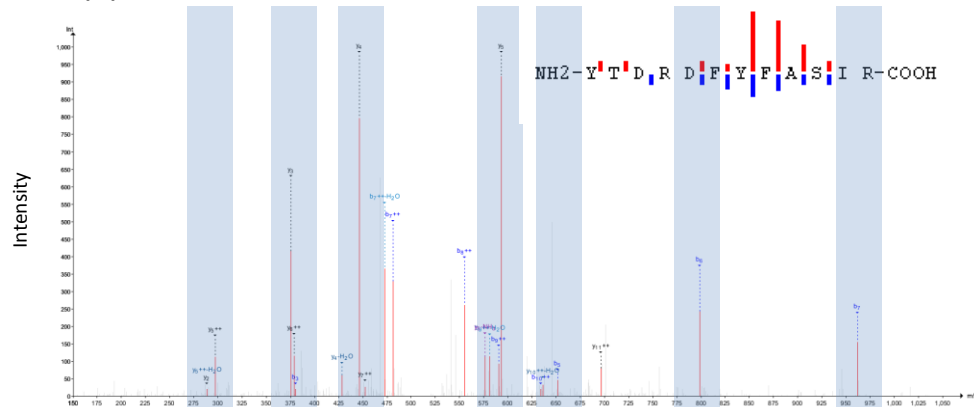
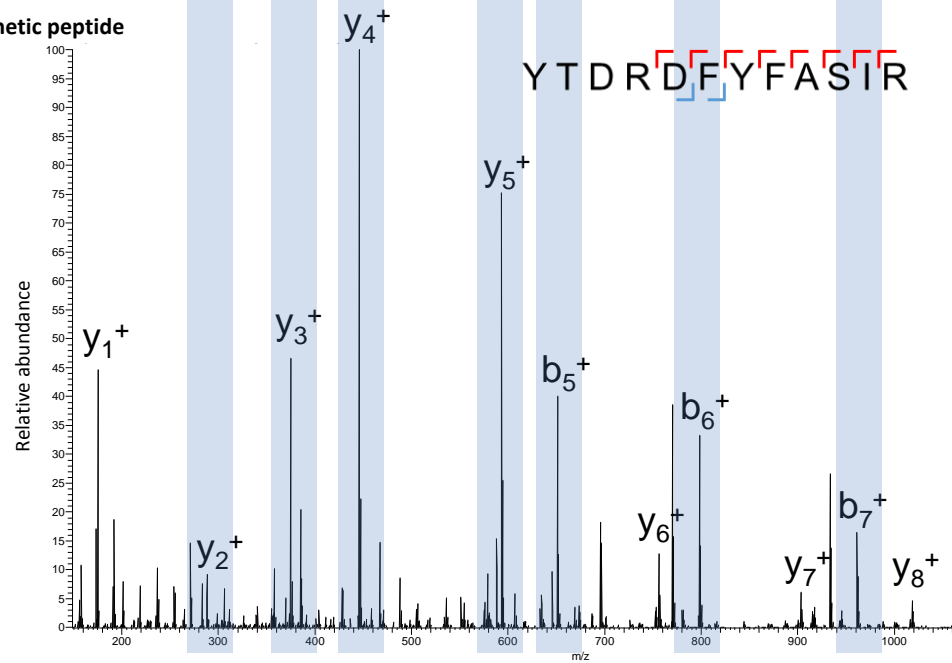


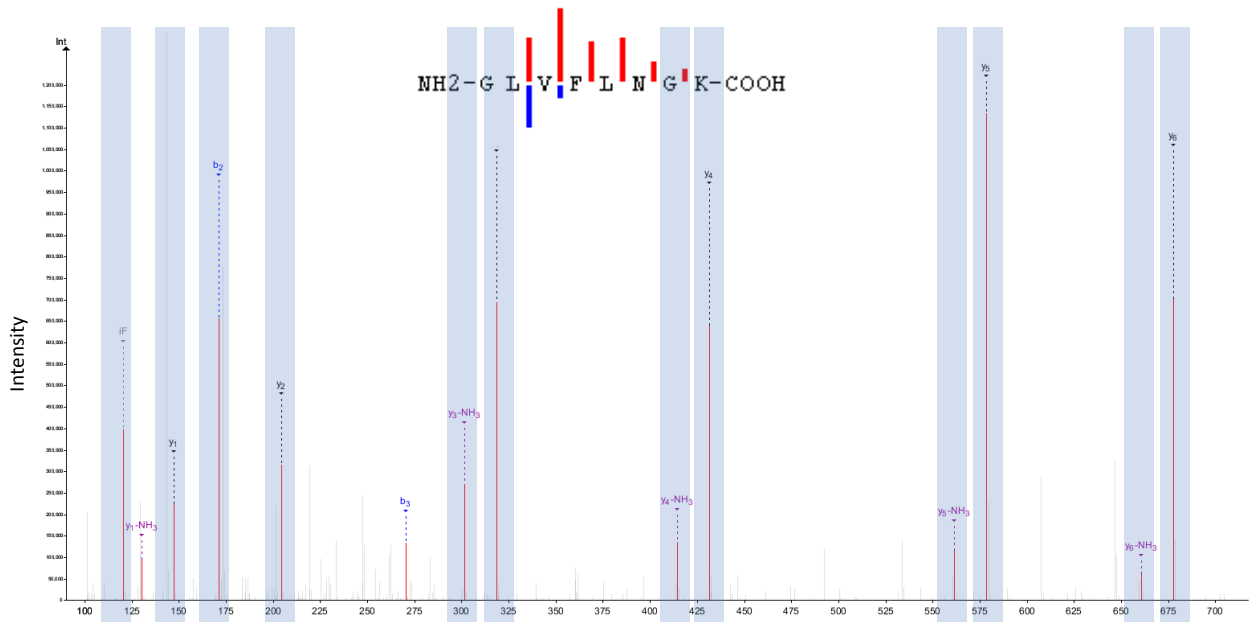
**a. Experimental peptide**



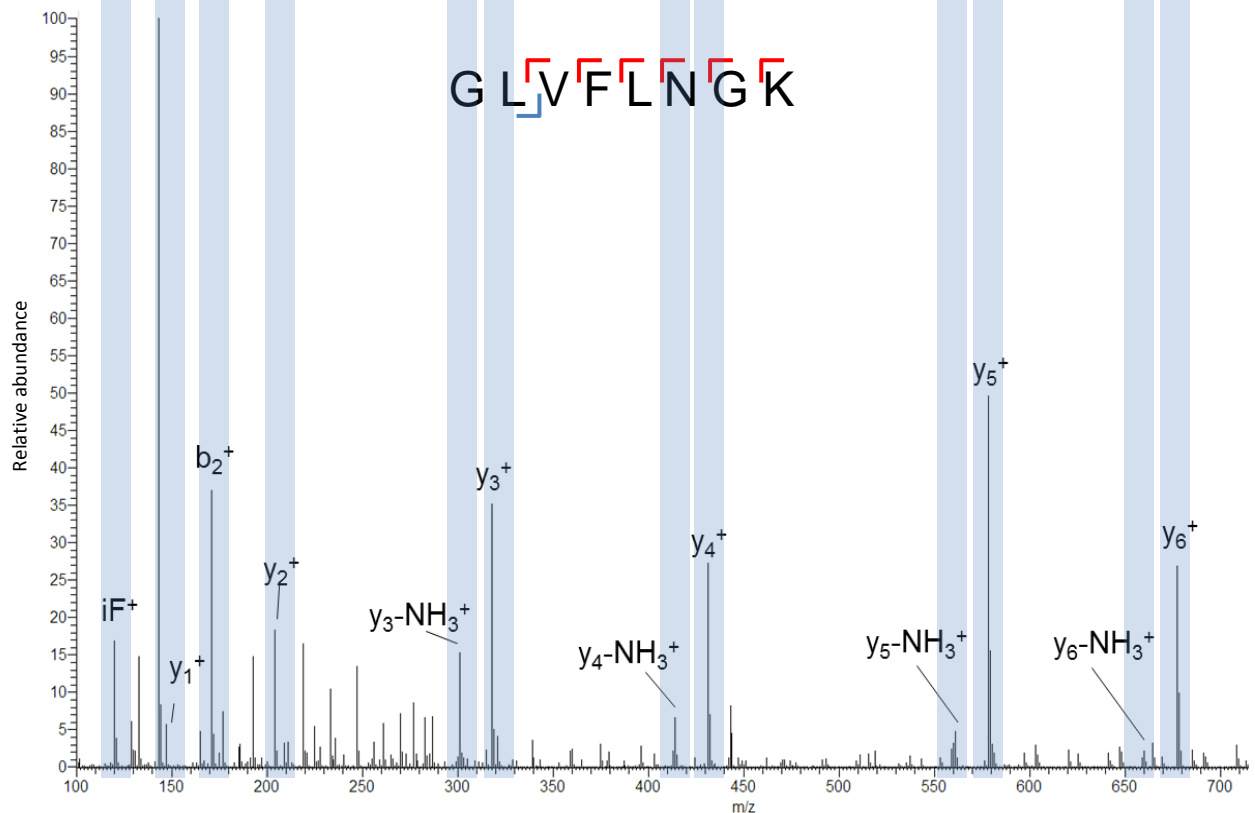
**b. Synthetic peptide**



### c. Experimental peptide



### d. Synthetic peptide



### Figure 12-figure supplement 1. Spectra validation for altMiD51.

Example of validation for altMiD51 specific peptides YTDRDFYFASIR and GLVFLNGK. (a,c) Experimental MS/MS spectra (PeptideShaker graphic interface output). (b,d) MS/MS spectra of the synthetic peptides.

Matching peaks are shown with blue masks. A diagram of the transcript with its accession number and the localization of the altORF and the CDS is shown at the top.