

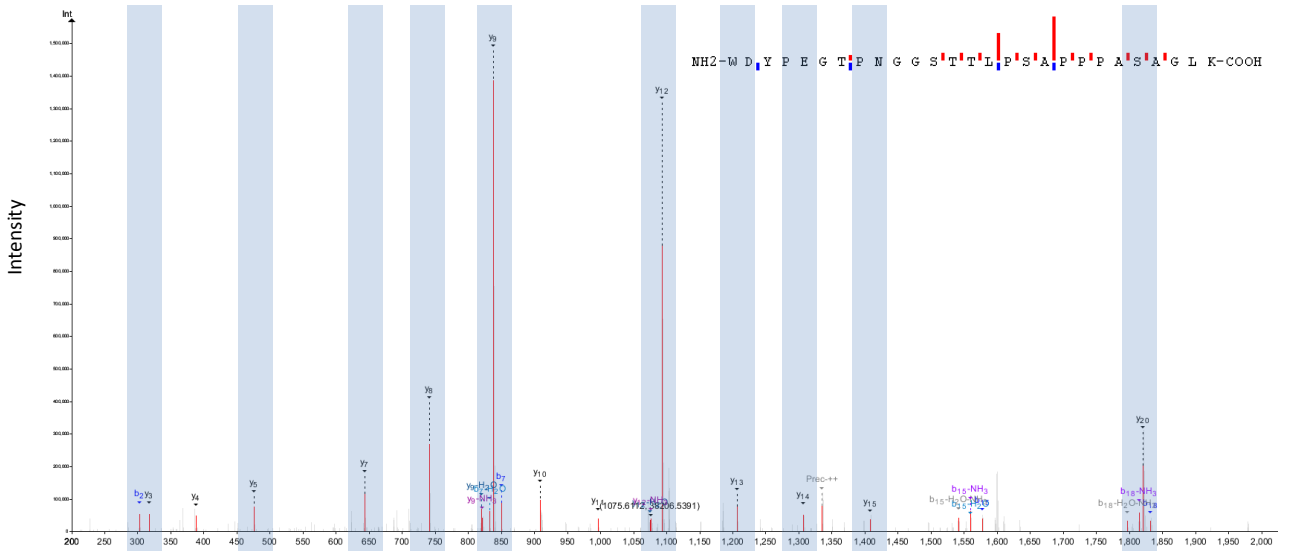
AltLINC01420<sup>nc</sup>

70 273

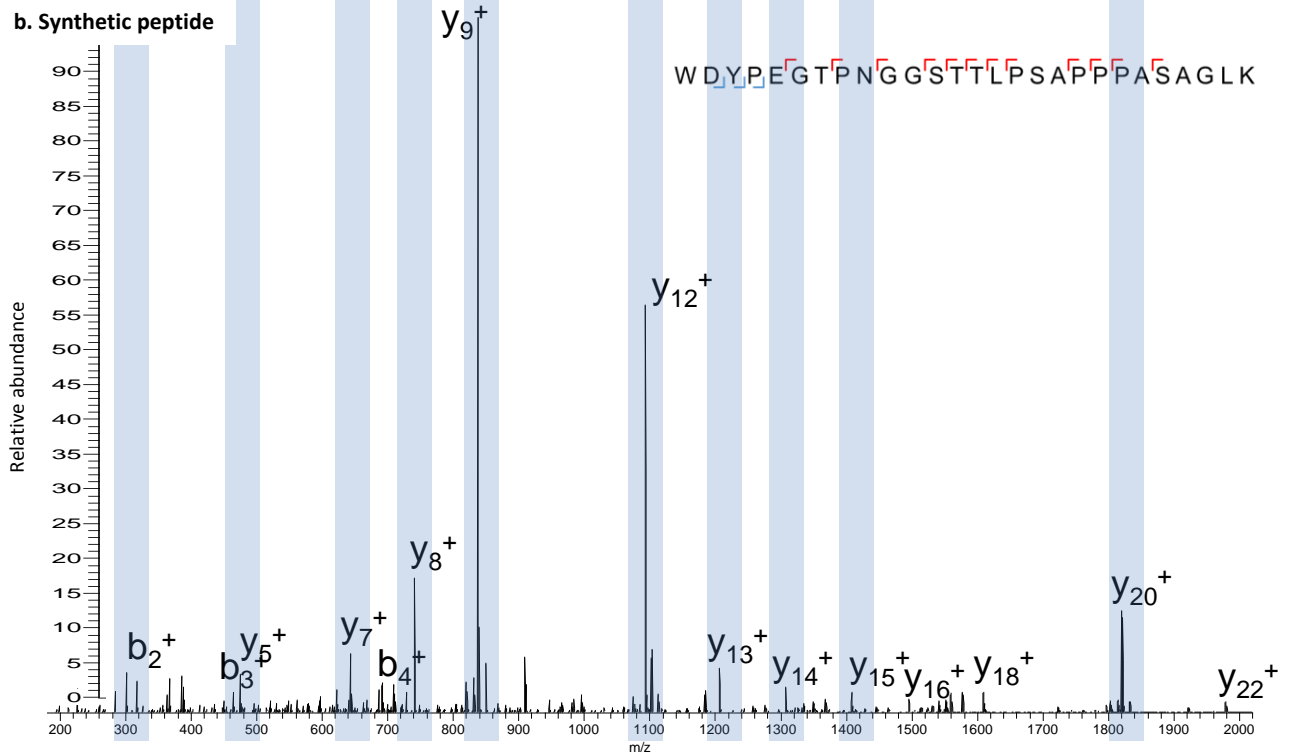


NR\_015367.2

### a. Experimental peptide



### b. Synthetic peptide



**Figure 5-figure supplement 3: Spectra validation for altLINC01420<sup>nc</sup>**

Example of validation for altLINC01420<sup>nc</sup> specific peptide

WDYPEGTPNGGSTTLPSAPPPASAGLK. (a) Experimental MS/MS spectra

(PeptideShaker graphic interface output). (b) MS/MS spectra of the synthetic peptide.

Matching peaks are shown with blue masks. A diagram of the transcript with its accession number and the localization of the altORF is shown at the top.