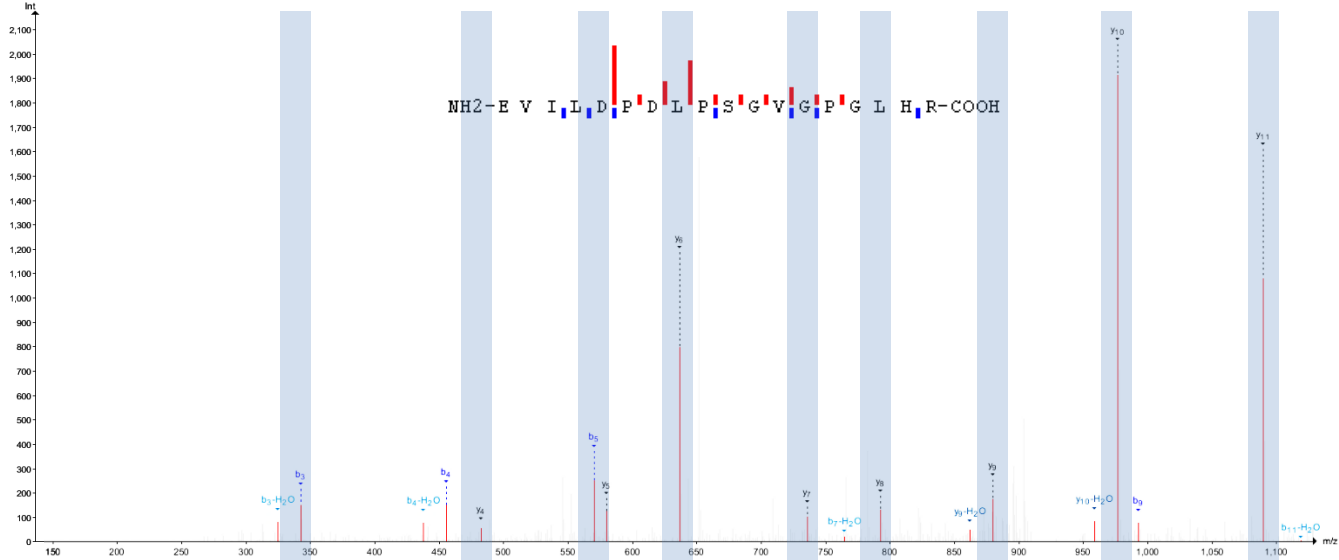
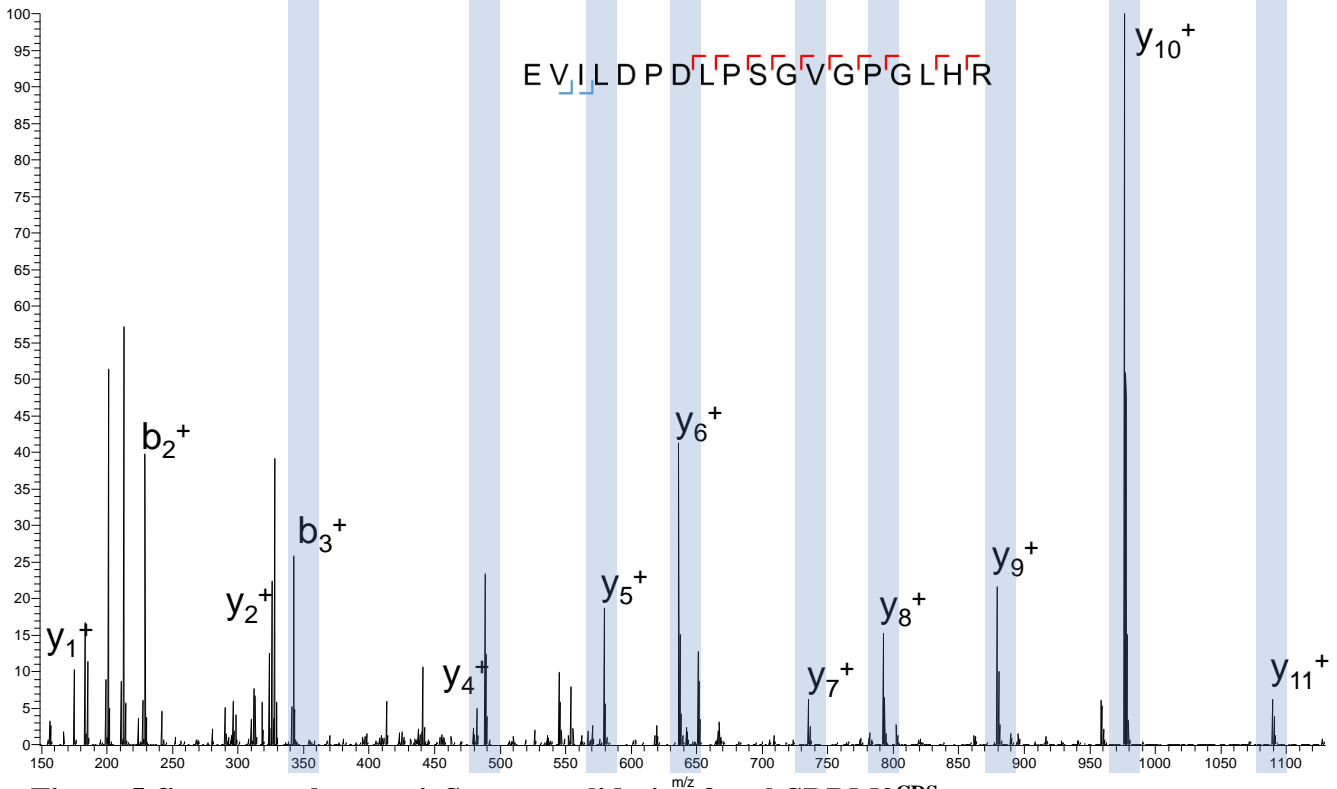


**a. Experimental peptide**



**b. Synthetic peptide**



**Figure 5-figure supplement 4. Spectra validation for altSRRM2<sup>CDS</sup>**

Example of validation for altSRRM2<sup>CDS</sup> specific peptide EVILDPDLPSGVGPGLHR. (a)

Experimental MS/MS spectra (PeptideShaker graphic interface output). (b) MS/MS spectra of the synthetic peptide.

Matching peaks are shown with blue masks. A diagram of the transcript with its accession number and the localization of the altORF and the CDS is shown at the top.