

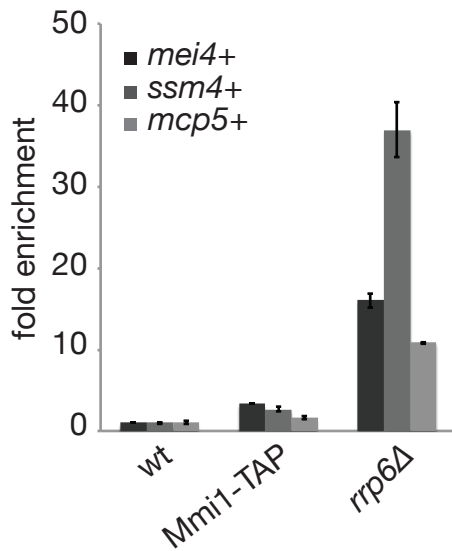
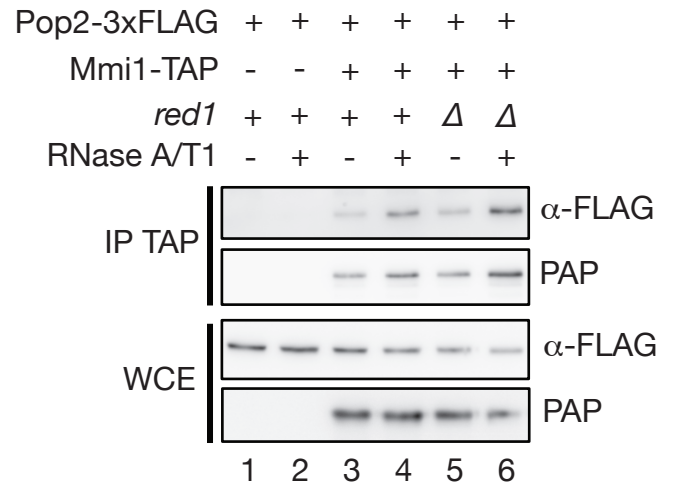
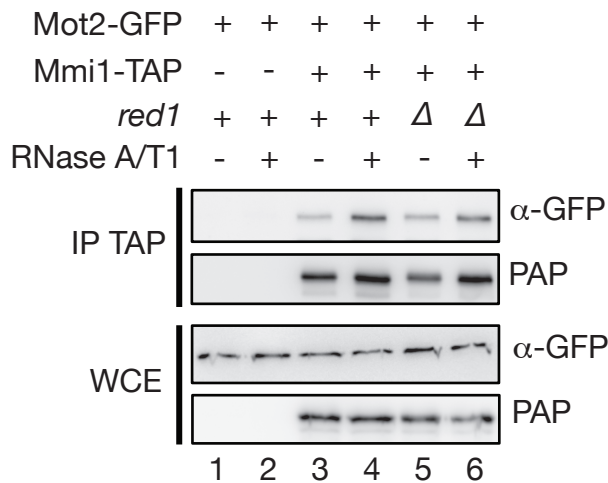
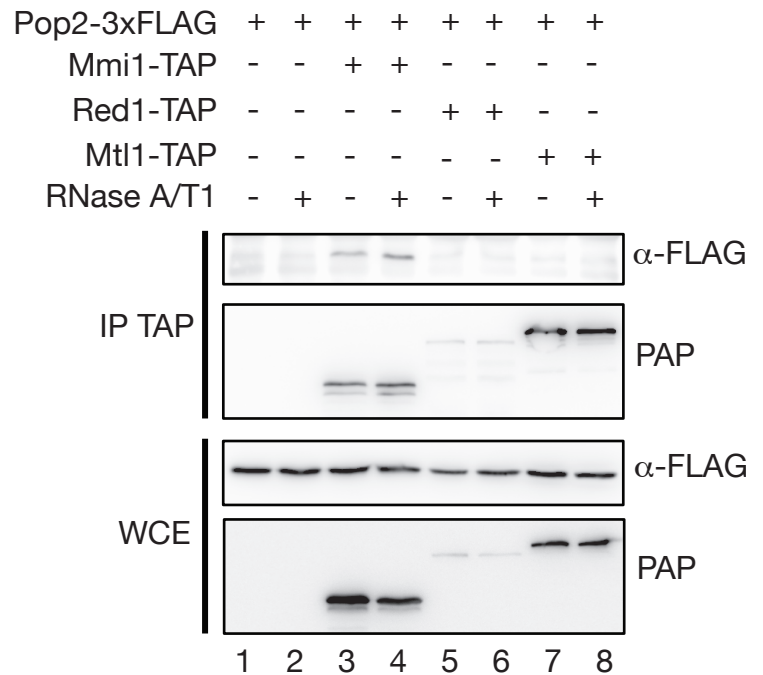
A**B****C****D**

Figure 1-figure supplement 1. The RNA-binding protein Mmi1, but not MTREC, associates with the Ccr4-Not complex *in vivo*.

(A) RT-qPCR analysis of the *mei4+*, *ssm4+* and *mcp5+* meiotic transcripts in Mmi1-TAP cells grown in minimal medium (EMM0.5X). Signals were normalized to *act1+* mRNA levels and expressed relative to the wild type strain. A strain deleted for Rrp6 was used as a control. Error bars represent the standard deviation from three independent experiments. Note that Mmi1-TAP cells display minor accumulation of meiotic transcripts.

(B), (C) Western blots showing that Pop2-3xFLAG (B) and Mot2-GFP (C) co-immunoprecipitate with Mmi1-TAP in minimal medium (EMM0.5X) in an RNA- and Red1-independent manner.

(D) Western blot showing that Pop2-3xFLAG co-immunoprecipitates with Mmi1-TAP in rich medium (YE), but not with Mtl1-TAP and Red1-TAP.