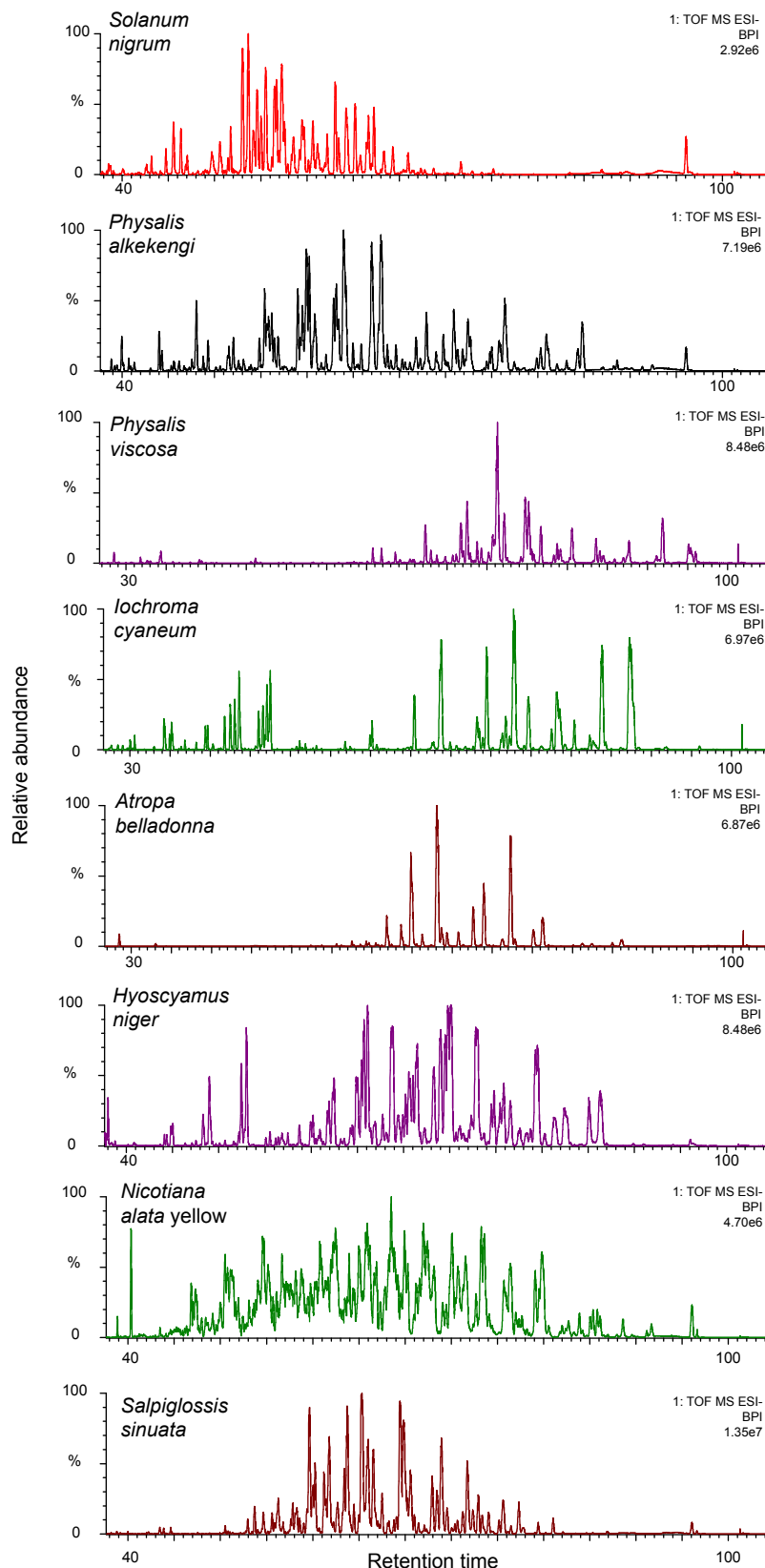


**Figure 1-Figure Supplement 3**



**Figure 1-Figure Supplement 3: The complexity of acylsugar phenotype across multiple acylsugar producing species.** Undiluted trichome extracts collected from plants at the NYBG were run on a 110-min gradient on a C18 column as described in the Methods (Figure Supplement 6). Peaks consistent with acylsugar masses and fragmentation patterns eluted between 30/40-min and 100-min for all species. Most of the peaks shown in chromatograms above have  $m/z$  and fragmentation patterns consistent with being acylsugars with aliphatic acyl chains. The most abundant peaks were identified, and have been described in Figure Supplement 2.