

Figure 2-Figure Supplement 3

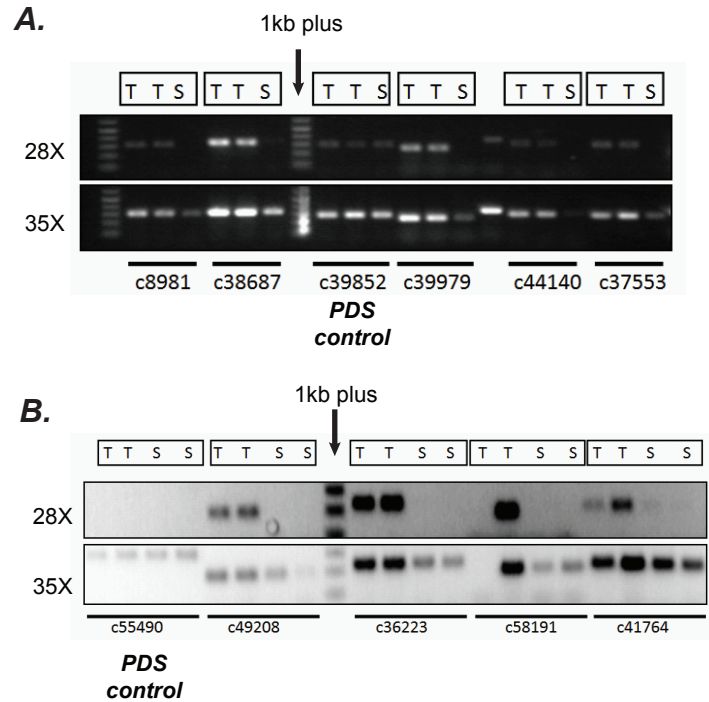


Figure 2-Figure Supplement 3: Confirmation of differential expression results from RNA-seq using semi-quantitative RT-PCR (A, B) Verification of trichome high expression of certain transcripts using semi-quantitative RT-PCR in *S. quitoense* (A) and *Salpiglossis* (B). The comparisons between Trichome (T) and Shaved stem (S) tissues involved using the same amount of starting cDNA, stopping the reactions after 28 or 35 cycles of PCR and running them on an agarose gel. Phytoene desaturase (PDS) which was not estimated to be differentially expressed based on RSEM/EBSeq analysis was used as control.