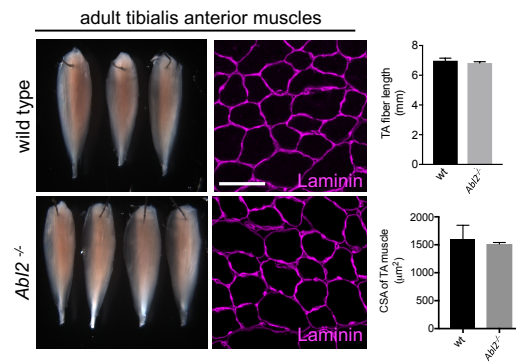


Figure 2-figure supplement 2



Limb muscles appear normal in muscle length and cross-sectional area. Hind limbs were fixed in 4% PFA, and tibialis anterior (TA) muscles were dissected at full length from 3 wild type and 3 *Abl2*^{-/-} mice. Sections were stained with antibodies to Laminin to outline the muscle fibers. The length and cross-sectional area of *Abl2*^{-/-} TA muscles are normal. The means \pm SEMs from the left TA muscles of 3-4 mice in each group are shown. Scale bar is 50 μ m.