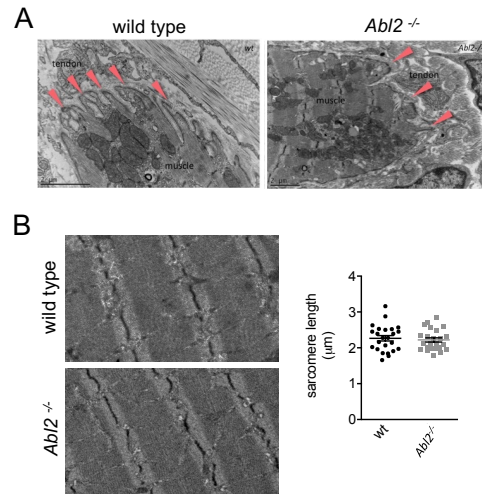


Figure 5-figure supplement 4



Ultrastructural appearance of muscle-tendon junctions and muscle fibers is normal in *Abi2* mutant mice. (A) Deep muscle membrane specializations form at the myotendinous junction in wild type and *Abi2*^{-/-} mice. (B) The scatter plot shows the sarcomere lengths for 12 fibers from two wild type and two *Abi2*^{-/-} mice. The mean \pm SEMs are also shown.