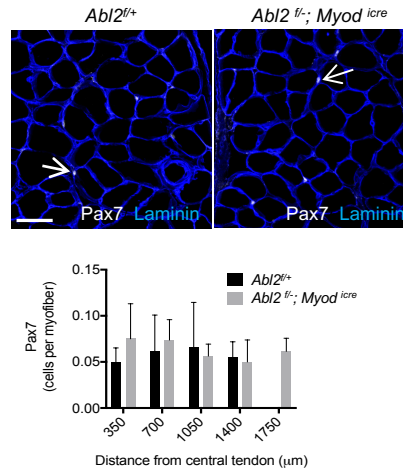


Figure 6-figure supplement 5



The number of Pax7<sup>+</sup> cells is increased in proportion to the increased length of myofibers. Serial cross-sections of the diaphragm were stained with antibodies to Laminin to outline muscle fibers and with antibodies to Pax7 to label satellite cells. The number of Pax7<sup>+</sup> cells was divided by the total number of muscle fibers in each visual field. Longer muscle fibers in *Abl2<sup>fl/-</sup>* mice have proportionally more Pax7<sup>+</sup> cells. The graph shows the mean ( $\pm$  s.d.) number of Pax7<sup>+</sup> cells in serial cross sections from three mice in each group. Scale bar is 50  $\mu$ m.