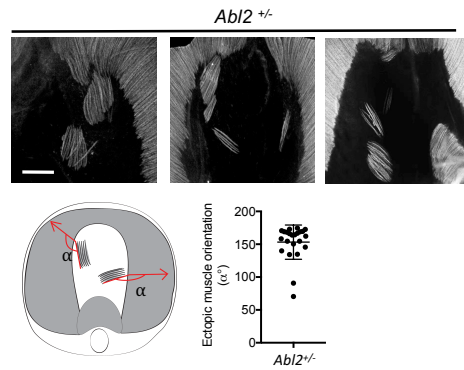


Figure 8-figure supplement 6



The orientation of ectopic muscle fibers correlates with the orientation of myofibers in the nearby main costal diaphragm muscle. Representative images of the central tendon area in whole mounts of the diaphragm from *Abi2*^{+/-} mice. The cartoon shows the method for measuring and quantifying the orientation of myofibers in ectopic muscle islands, compared to myofibers in the nearest costal diaphragm. The scatter plot shows the angle of each ectopic island in relation to the orientation of the myofibers in the nearest costal diaphragm muscle. The mean value and \pm s.d. are shown. Scale bar is 500 μ m.