

Figure 1 - Figure Supplement 1

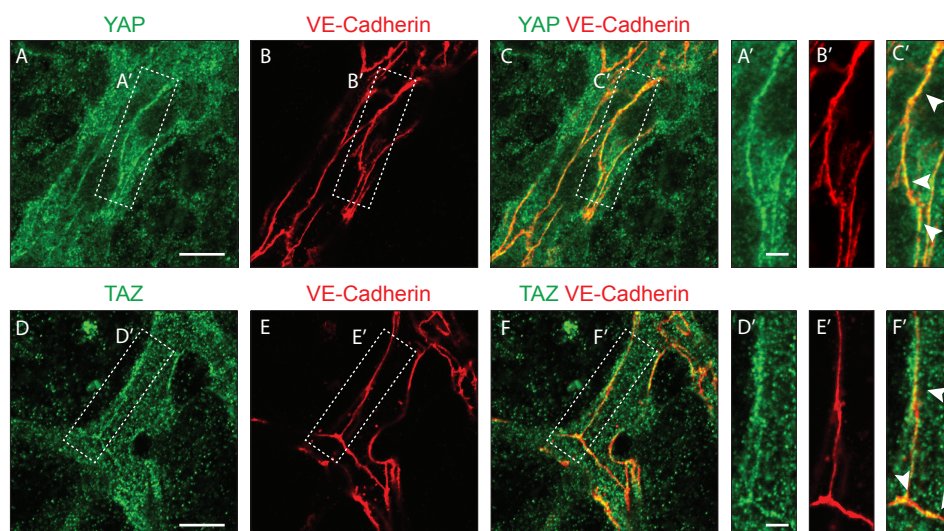


Figure 1 - Figure supplement 1. YAP and TAZ localise at endothelial adherens junctions in the mouse retina.

Immunofluorescence stainings of YAP (green, A-C, A'-C'), TAZ (green, D-F, D'-F') and VE-Cadherin (red, B, E, B', E') were performed in wild-type mouse retinas at P6. Arrows, co-localisation of YAP or TAZ with VE-Cadherin. Images correspond to single confocal planes. $n > 3$ pups per staining. Scale bar A-C and D-F 10 μm , A'-C' and D'-F' 3 μm .