

Figure 2 - Figure supplement 2

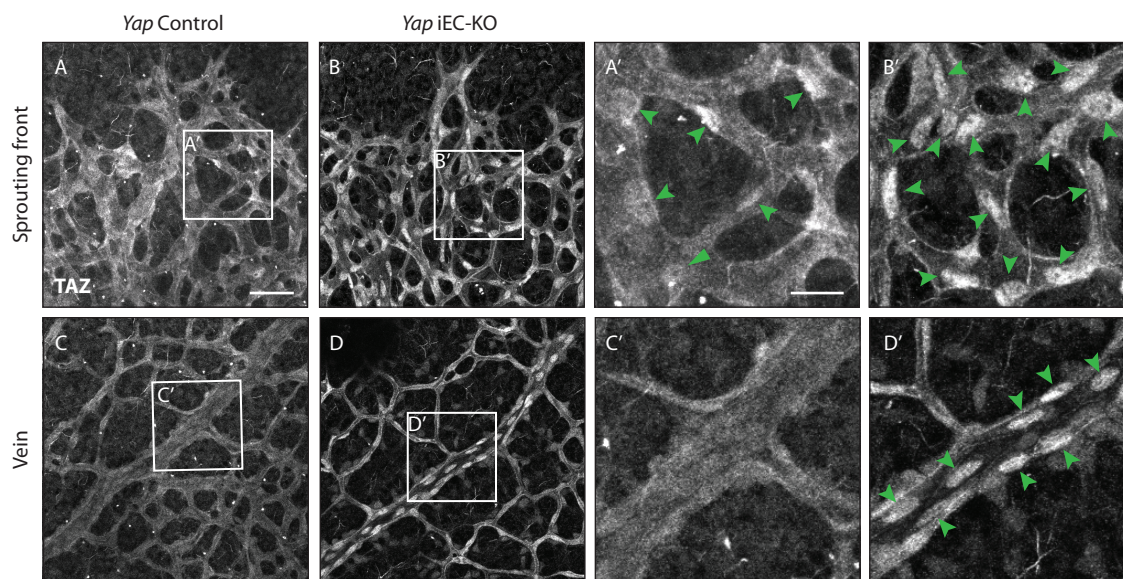


Figure 2 – Figure supplement 2. TAZ compensates for the loss of YAP in endothelial cells *in vivo*.

Retinas from P6 *Yap* iEC-KO (B,D and B',D') and littermate controls (A,C and A', C') were immunostained for TAZ. Green arrowheads, nuclear Taz. A,B, A',B' images correspond to maximum projection of z stack. C,D,C',D' correspond to single confocal planes. n> 3 pups. Scale bar: A-D 50µm, A'-D' 20µm.