

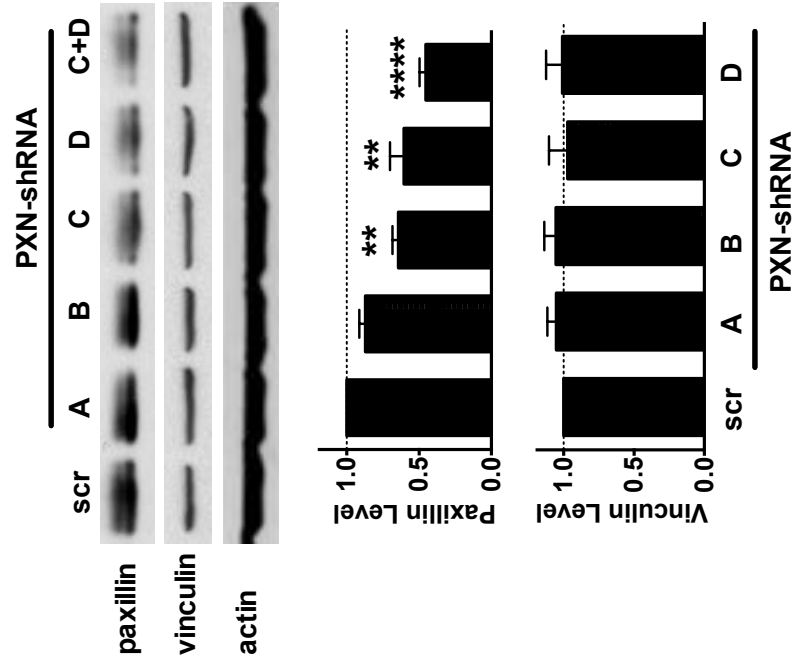
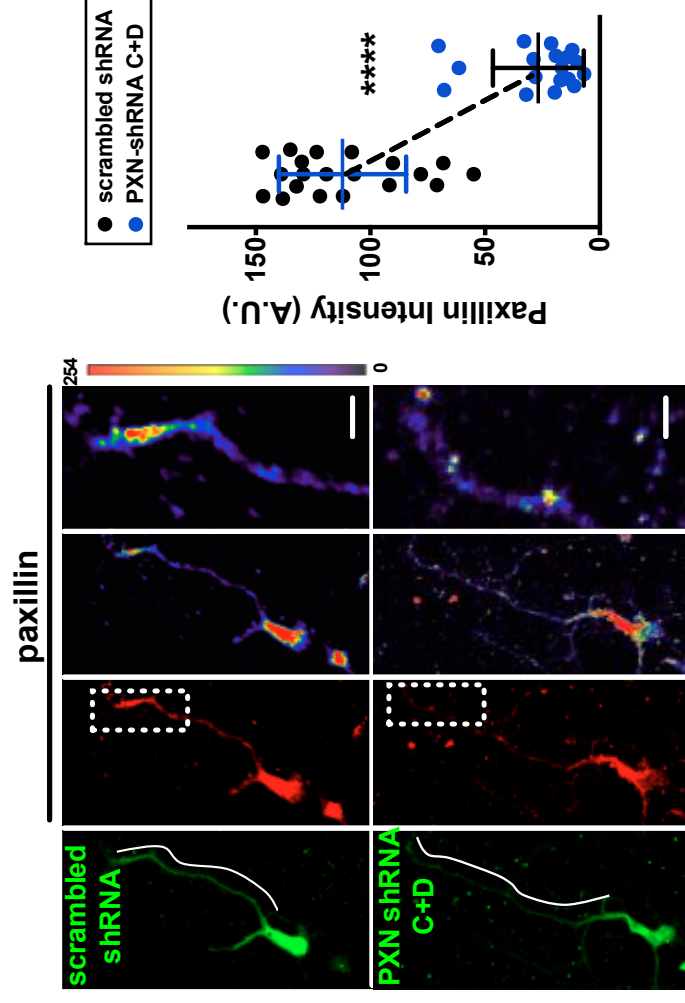
A**B**

Figure 5– figure supplement 1

Knockdown efficiency of PXN shRNAs

A. Western blot showing efficiency of shRNA-mediated paxillin knockdown. Mouse neuroblastoma Neuro-2a (N2a) cells were transfected with plasmids encoding scrambled shRNA (“scr”) or one of four paxillin shRNAs (sequence A, B, C, or D) targeting to different regions of the paxillin sequence. Summary histograms showing that shRNA D exerted a ~2-fold suppression on paxillin expression and it had no effect on vinculin expression. Data represent mean \pm SEM (n=5, normalized to control actin, compared to that of scr experiment; “*”, $P < 0.05$; t -test “***”, $p < 0.01$, “*****”, $p < 0.0001$; t test).

B. Images of neurons transfected with plasmids encoding scrambled shRNA or paxillin shRNAs (shRNA C + shRNA D), immunostained with antibody specific against paxillin. Right-most panels show the region of interest (ROI, dashed box) of neurite tips at a higher magnification, with the intensity of paxillin staining coded by pseudocolors in a linear scale. Bar: 5 μ m. Dot plot reflects quantification of paxillin immunostaining intensity (\pm SEM, n=20 cells each, normalized to EGFP intensity and relative to scramble control; “*****”, $p < 0.0001$; one way ANOVA with *Dunnett’s post hoc* test).