

Figure 4 – figure supplement 1

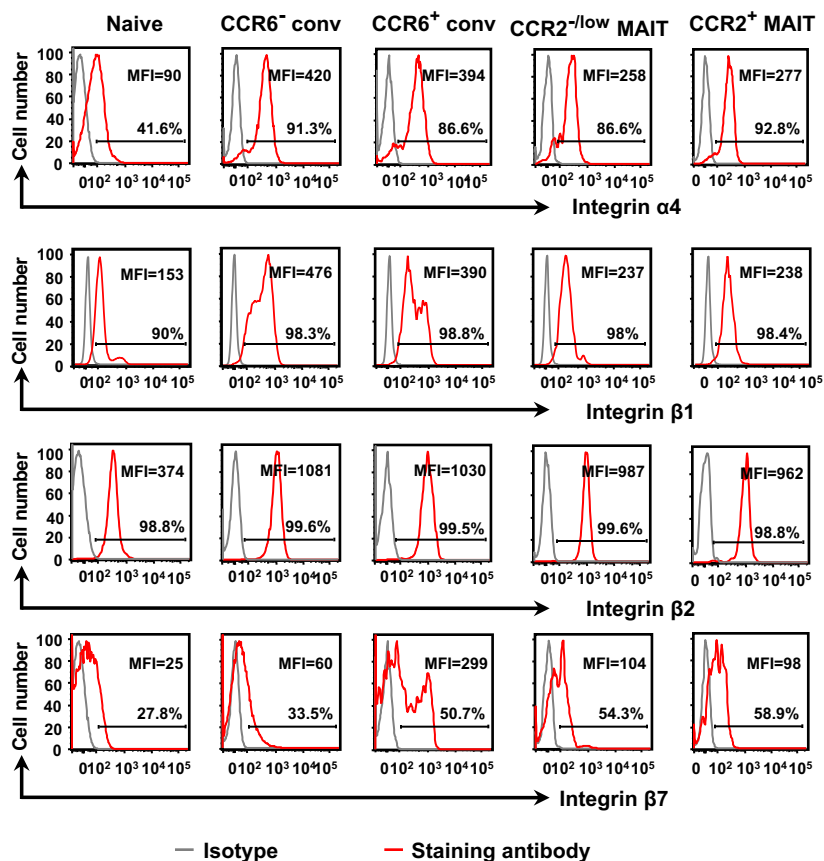


Figure 4 - figure supplement 1. Expression of integrins does not account for MAIT cells' arrest on activated endothelial cells. Staining of CD8α⁺ T cell subsets is shown for integrin subunits. Percentages of cells staining positive are indicated by the horizontal lines. MFI numbers are mean fluorescent intensities. Staining with isotype-matched antibodies served as negative controls. For each surface molecule data are from cells from one representative of four donors.