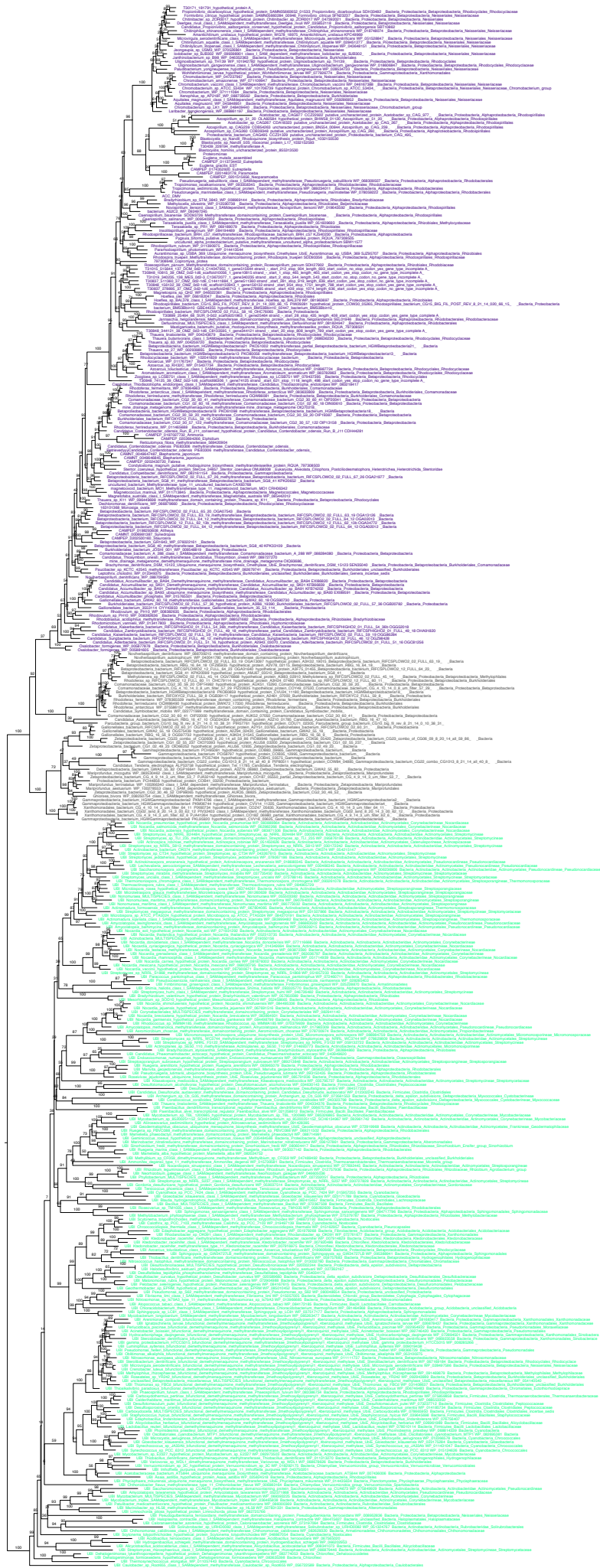


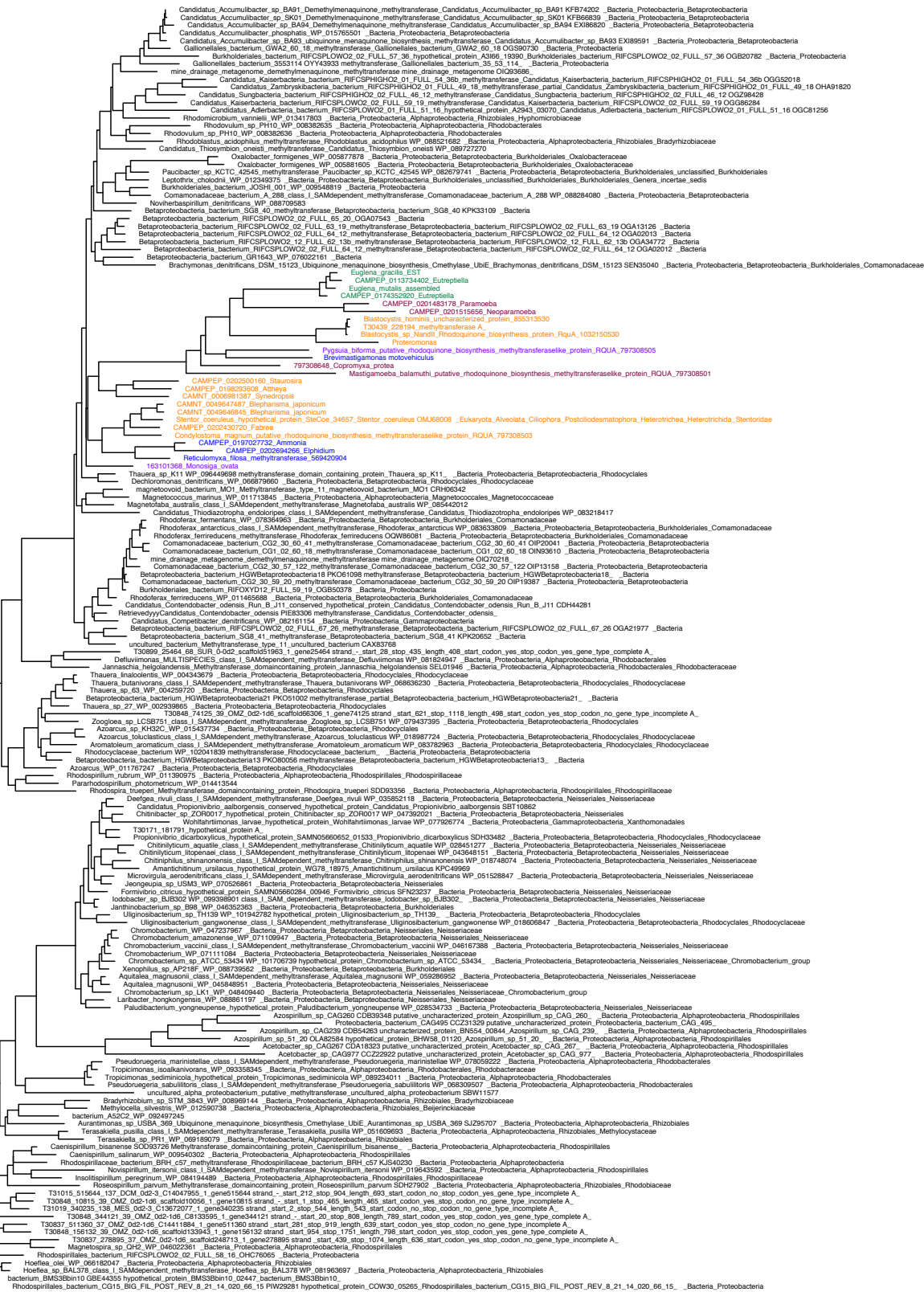
Tree 1 - RQUA + UBIE + UBIE-related clades  
406 sequences, 114 sites





# Tree 3 - RQUA Full dataset

## Topology Test - Eukaryotic monophyly





Tree 4 - RQUA Full dataset  
Topology Test - Group A1 eukaryotes  
Blastocystis, Proteromonas, Neoparamoebids, Euglenids, Pygusua



Tree 5 - RQUA Full dataset  
Topology Test - Group A1 eukaryotes + Brevimastigamonas



Tree 6 - RQUA Full dataset  
Topology Test - Group A1 eukaryotes + *Brevimastigamonas*  
+ *Mastigamoeba*





Tree 7 - RQUA Full dataset  
Topology Test - Group A eukaryotes



Tree 8 - RQUA Full dataset  
Topology Test - Group B eukaryotes





Tree 9 - RQUA Full dataset  
Topology Test - Obazoa (Pygusua + Monosiga)



# Tree 10 - RQUA Full dataset

## Topology Test - Amorphea Obazoa + Amoebozoa)



Tree 11 - RQUA Full dataset  
Topology Test - Amoebozoa





Tree 12 - RQUA Full dataset  
Topology Test - Stramenopiles + Alveolates



Tree 13 - RQUA Full dataset  
Topology Test - Stramenopiles + Alveolates + Rhizaria (SAR)

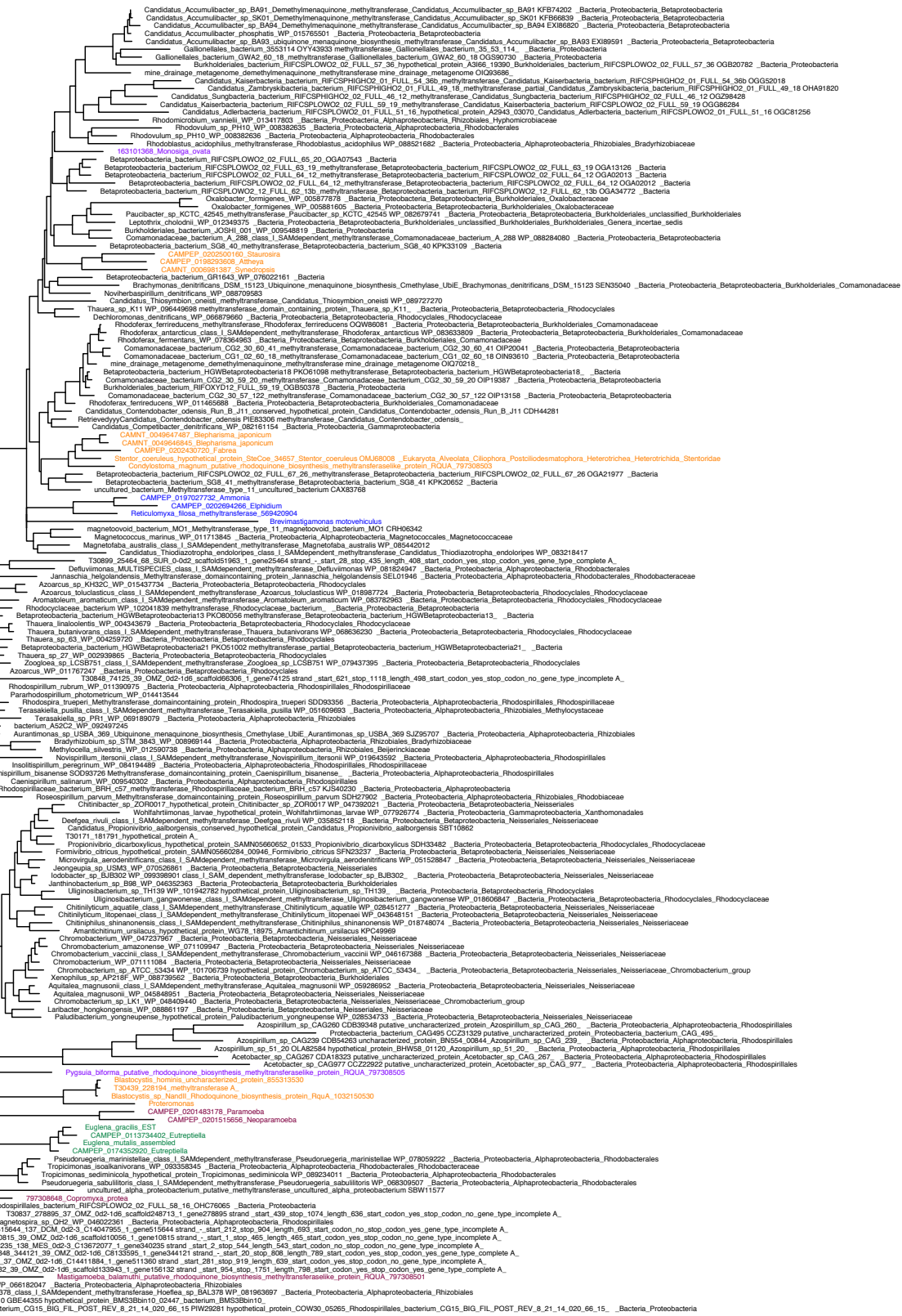


Tree 14 - RQUA Full dataset  
Topology Test - Diaphoretickes (SAR + Euglenids)





Tree 15 - RQUA Full dataset  
Topology Test - Rhizaria



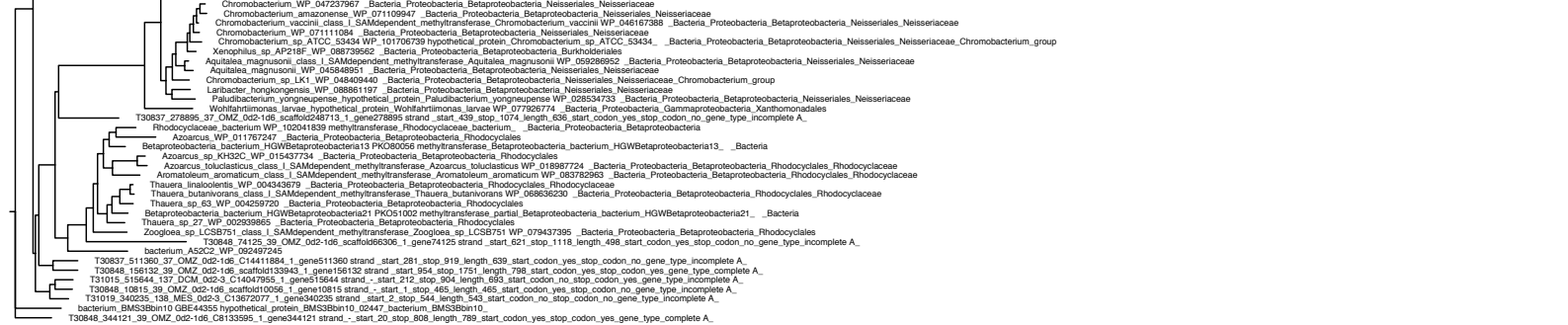




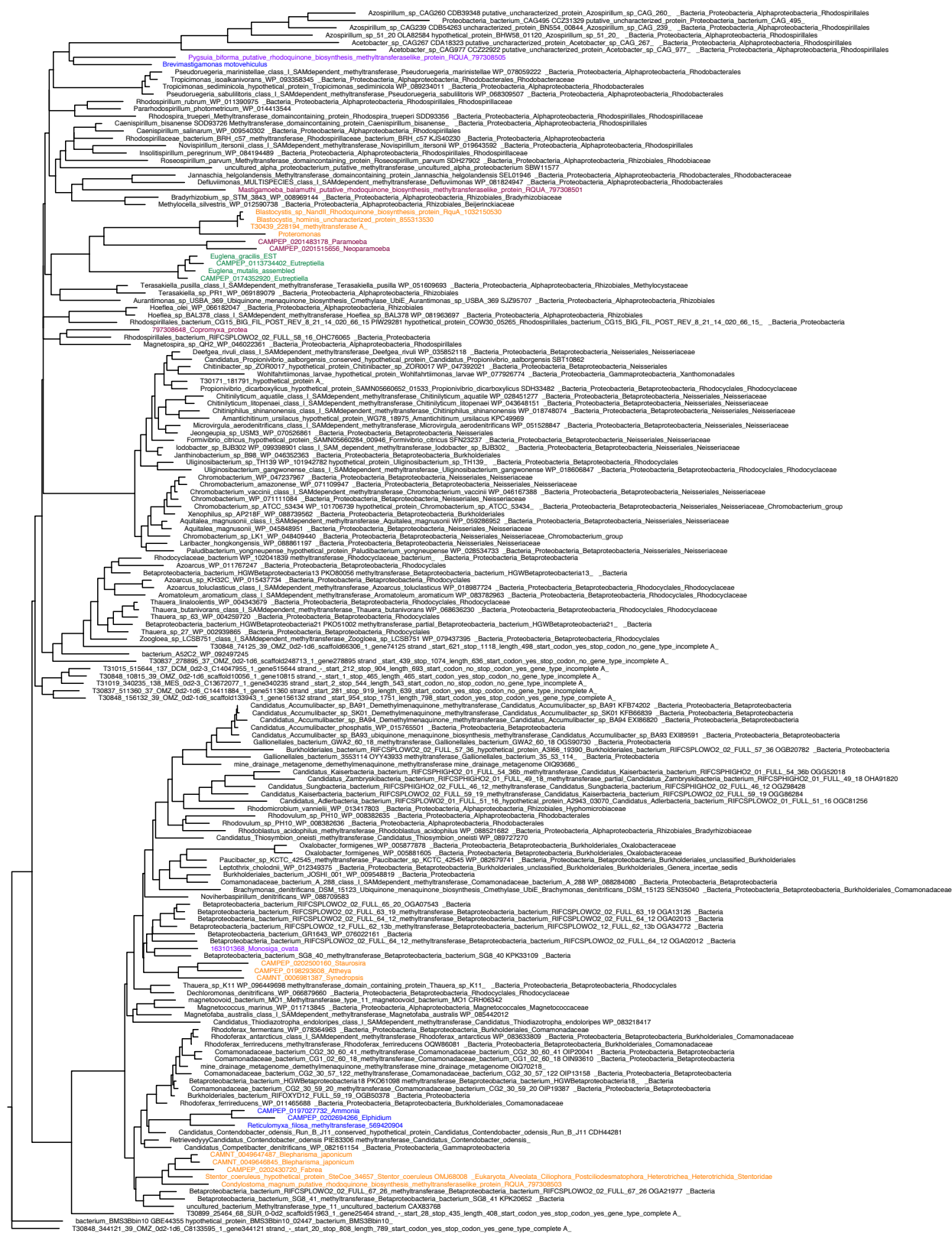


Tree 18 - RQUA Full dataset  
Topology Test - alphaproteobacteria





Tree 20 - RQUA Full dataset  
Topology Test - Group A eukaryotes + Group A alphaproteobacteria





Tree 21 - RQUA Full dataset  
Topology Test - Group B eukaryotes + Group B alphaproteobacteria

