

Figure 4 - Supplementary 5 NANDY

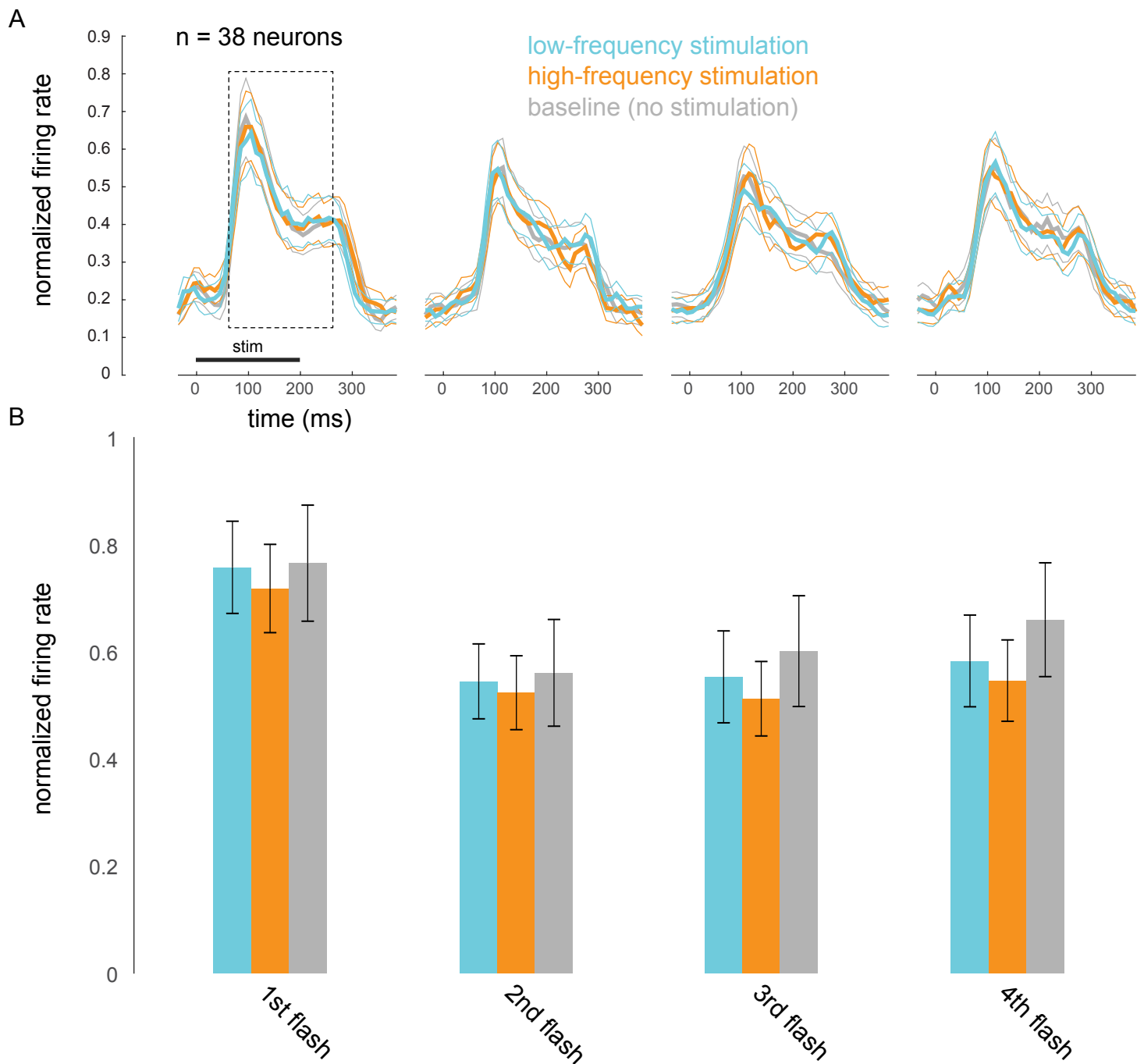


Fig 4 - Supp 5. Optical stimulation does not cause frequency-specific adaptation. (A) Responses evoked by the first four non-target stimuli, for trials in which attention was cued to the stimuli appearing at the opsin site. Responses were averaged and normalized for each neuron to the maximum response across all stimulus positions. Normalized responses were then averaged across 38 neurons recorded in 15 sessions. (B) The corresponding average firing rates over the 200ms stimulus-evoked period indicated by the box in A (60-260ms post stimulus onset).