

Figure 2 - Supplementary 5 NANDY

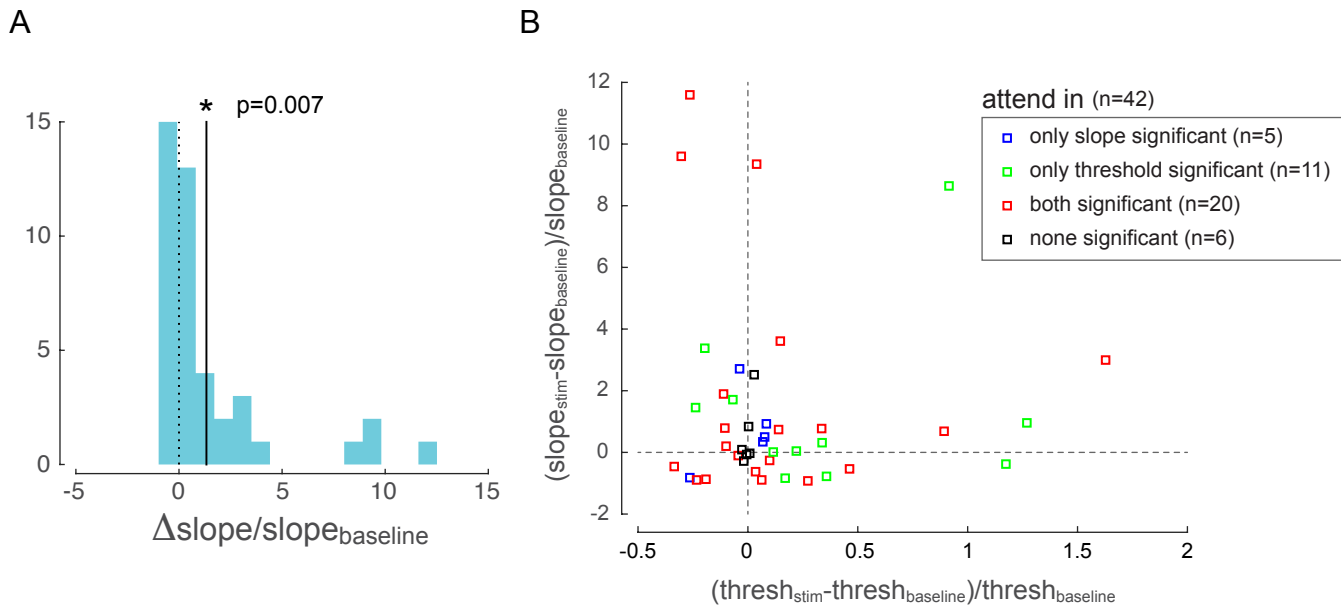


Fig 2 - Supp 5. Behavioral changes with optical stimulation. (A) Change in psychometric function slope due to low-frequency optical stimulation when the monkey was attending in to the site of optical stimulation. The solid line represents the mean of the distribution, which is significantly different from zero. (B) Change in psychometric function threshold and slope due to low-frequency optical stimulation when the monkey was attending in to the site of optical stimulation. Each point represents one behavioral session. Changes are expressed as a difference between stimulation and baseline conditions (normalized by baseline). The color code represents whether the changes is threshold and slope were significant in each behavioral session: red=both threshold and slope changes were significant; green=only threshold change was significant; blue=only slope change was significant; black=neither were significant.