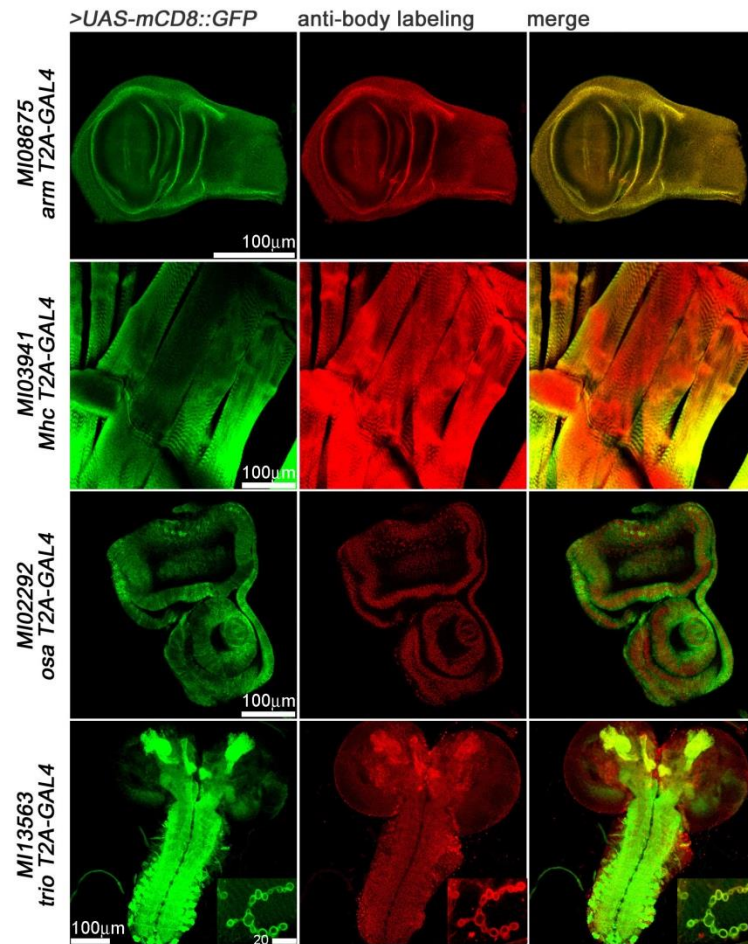


A. Comparison of *T2A-GAL4>UAS-mCD8::GFP* with anti-body staining



B. Expression comparison with *T2A-GAL4>mCD8::GFP* and *GFSTF*
T2A-GAL4>UAS-mCD8::GFP *GFSTF*

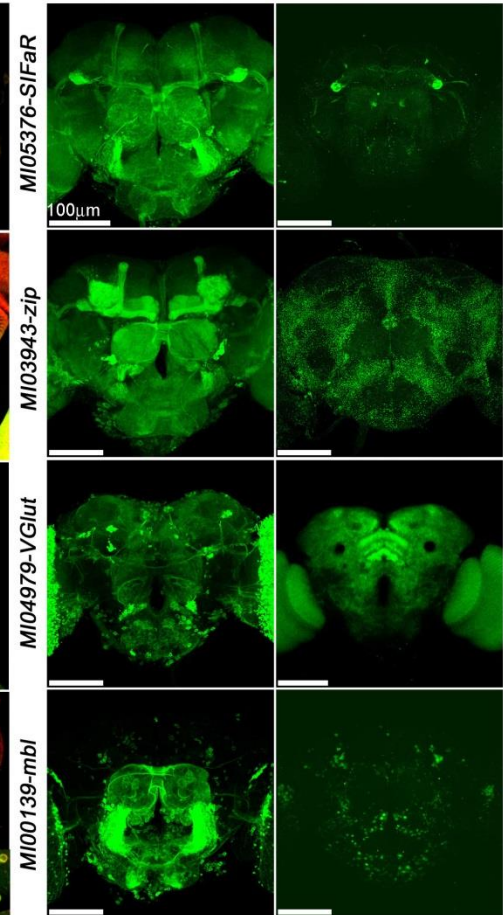


Figure 1-figure supplement 2. Similarities and differences between expression patterns associated with *GAL4> UAS-GFP* driven patterns and endogenous proteins in adult brains. (A) Comparison of *T2A-GAL4>UAS-mCD8::GFP* with anti-body stainings for *arm* (larval wing disc), *Mhc* (larval muscle), *osa* (larval eye-antennal imaginal disc) and *trio* (larval CNS and boutons/NMJ). Green: mCD8::GFP, Red: antibody labeling. (B) Comparison of *T2A-GAL4>UAS-mCD8::GFP* with *GFSTF* for *SIFaR*, *zip*, *VGlut* and *mbl* in adult brains. Note the striking differences. Green in left panel: mCD8::GFP; Green in right panel: GFSTF. Scale bar is shown in figure.