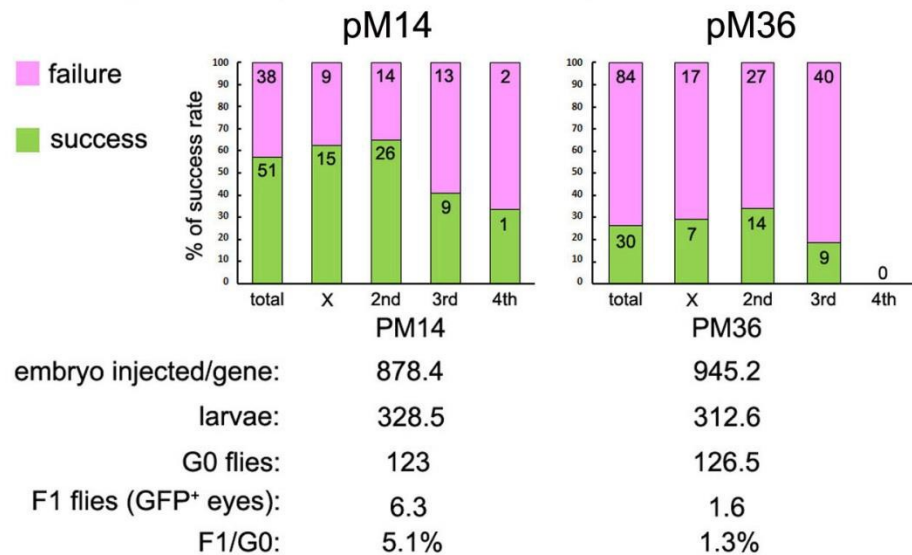
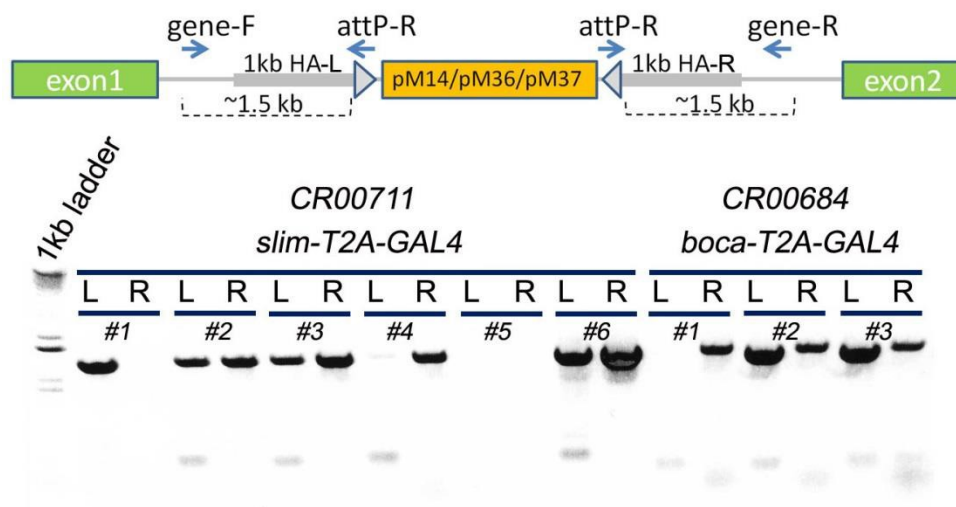


## A. Summary of microinjection for pM14 and pM36



## B. PCR validation



**Figure 2-figure supplement 1.** The efficiency of cassette insertion with CRIMIC pM14 and pM36, and PCR validation. (A) Summary of the microinjection success rates for pM14 and pM36. We injected embryos for 89 genes with pM14 and the success rate was 57.3%. We also injected embryos for 114 genes with pM36 and the success rate was 26.3%. (B) The CRIMIC flies were verified by PCR to ensure that cassettes are in the correct position. Two specific primers outside homology arms (gene-F/gene-R) in each gene were designed to amplify the homologous arm regions by PCR with attP-R primer. The CR00711 (*slim T2A-GAL4*) and CR00684 (*boca T2A-GAL4*) are shown here. The genomic DNA of individual alleles was extracted and PCR was performed (see Materials and Methods). The #2, #3 and #6 of *slim T2A-GAL4*s are correct alleles, and #2 and #3 of *boca T2A-GAL4*s are correct alleles. L: left region of the inserted cassette; R: right region of the inserted cassette.