

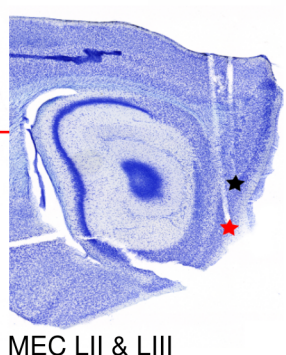
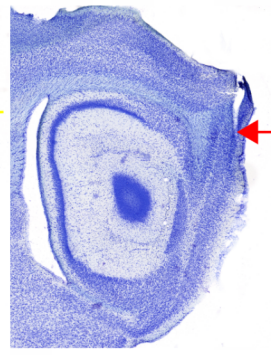
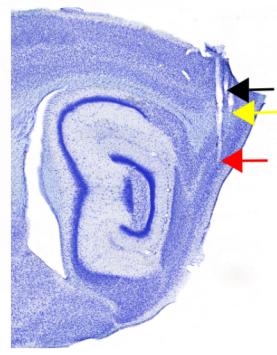
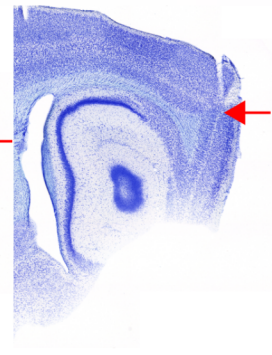
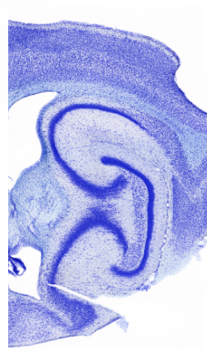
jp757 left
N = 11 HD cells
 (4 theta-rhythmic,
 7 non-rhythmic)

jp759 right
N = 10 HD cells
 (3 theta-rhythmic,
 7 non-rhythmic)

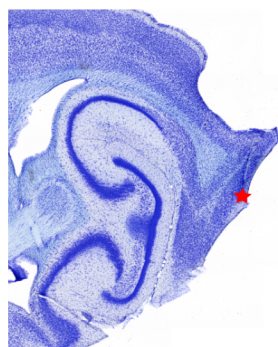
jp2159 left,
N = 4 HD cells
 (3 theta-rhythmic,
 1 non-rhythmic)

jp2159 right
N = 8 HD cells
 (2 theta-rhythmic,
 6 non-rhythmic)

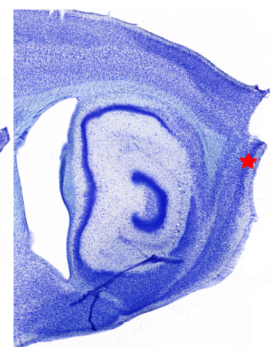
jp4506 right,
N = 9 HD cells
 (7 theta-rhythmic,
 2 non-rhythmic)



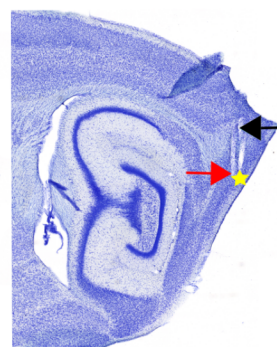
MEC LII & LIII



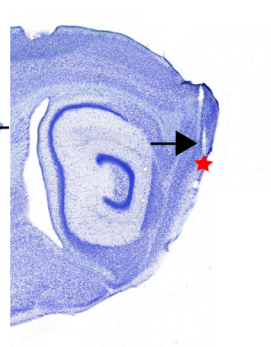
MEC LII



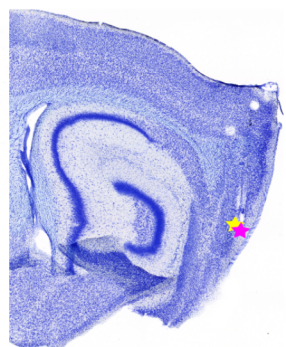
MEC LII



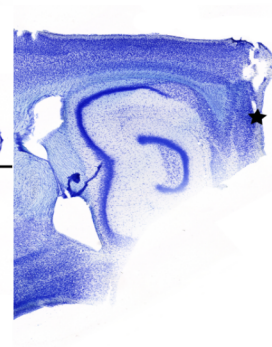
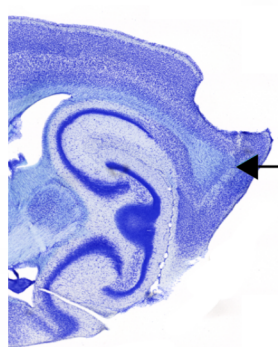
MEC LIII



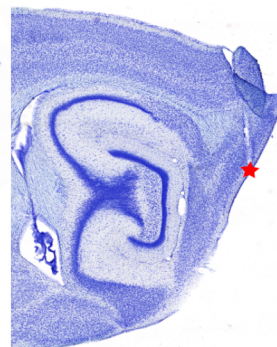
MEC LII



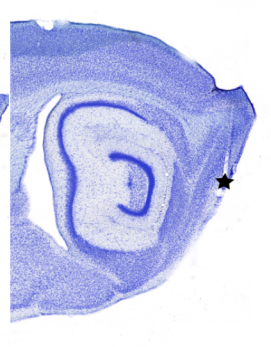
MEC LII



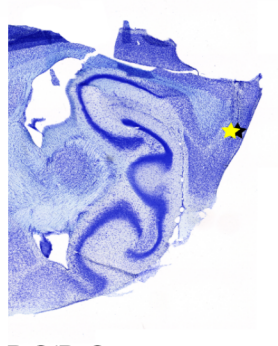
MEC LII



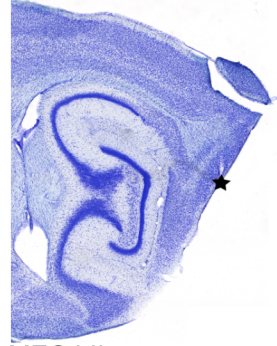
MEC LII



MEC LII



PrS/PaS



MEC LII