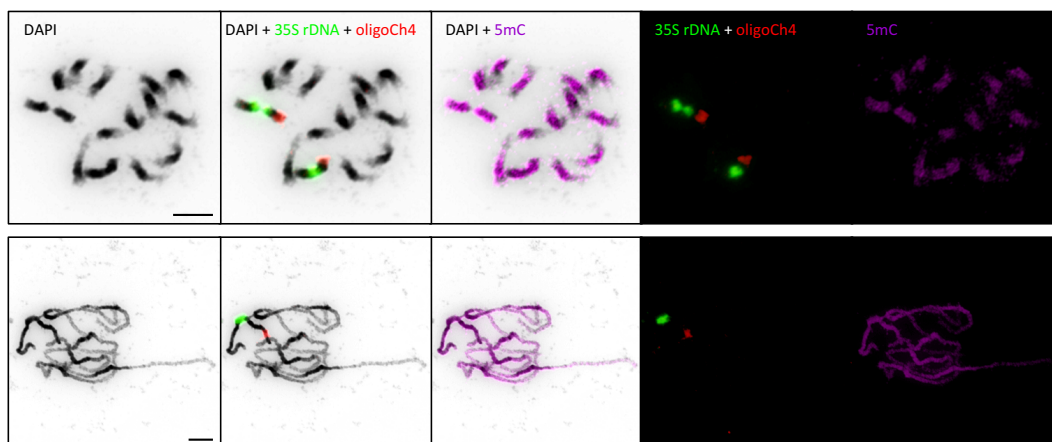


**Figure 6-figure supplemental 2.** Tree topology proportions simulated under assymmetric and unidirectional models

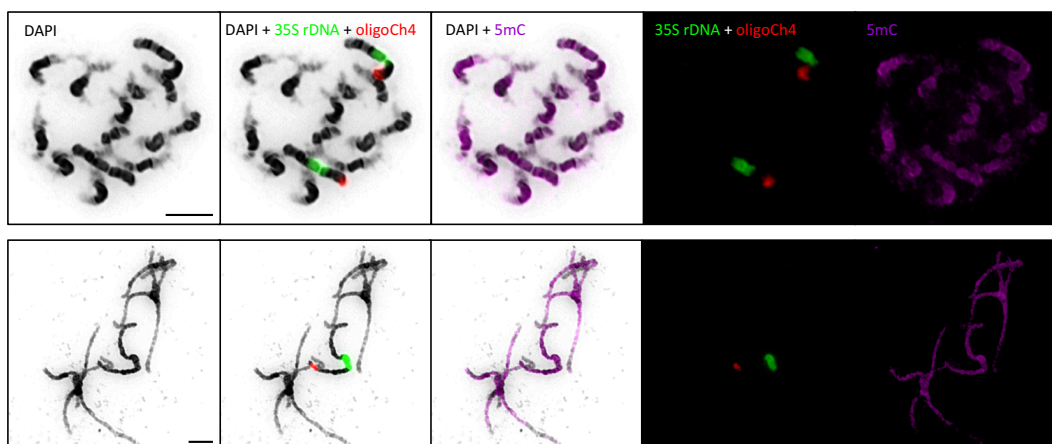
gene flow	m	N	sib-japon	japon-oxy	sib-oxy	D-stat
asymmetric	$2 \times 10^{-5}$	8333	0.53	0.31	0.15	0.35
	$2 \times 10^{-5}$	16666	0.41	0.40	0.18	0.38
	$4 \times 10^{-5}$	16666	0.30	0.49	0.21	0.40
	$2 \times 10^{-5}$	33332	0.30	0.49	0.21	0.40
unidirectional	$5 \times 10^{-5}$	10000	0.53	0.30	0.15	0.33
	$5 \times 10^{-5}$	20000	0.40	0.43	0.17	0.43
	$7.5 \times 10^{-5}$	20000	0.31	0.51	0.17	0.50
	$5 \times 10^{-5}$	30000	0.31	0.51	0.17	0.50

**Figure 8-figure supplemental 1. Immunodetection of anti-5mC antibody (pink), and FISH of 35S rDNA (green) and oligoCh4 (red) probes on mitotic and pachytene chromosomes in *Semiaquilegia adoxoides*, *Aquilegia vulgaris* and *A. formosa*.** Chromosomes were counterstained with DAPI and inverted using Photo-shop CS software (Adobe Systems). Scale bars = 10  $\mu$ m.

*Semiaquilegia adoxoides*



*Aquilegia vulgaris*



*Aquilegia formosa*

