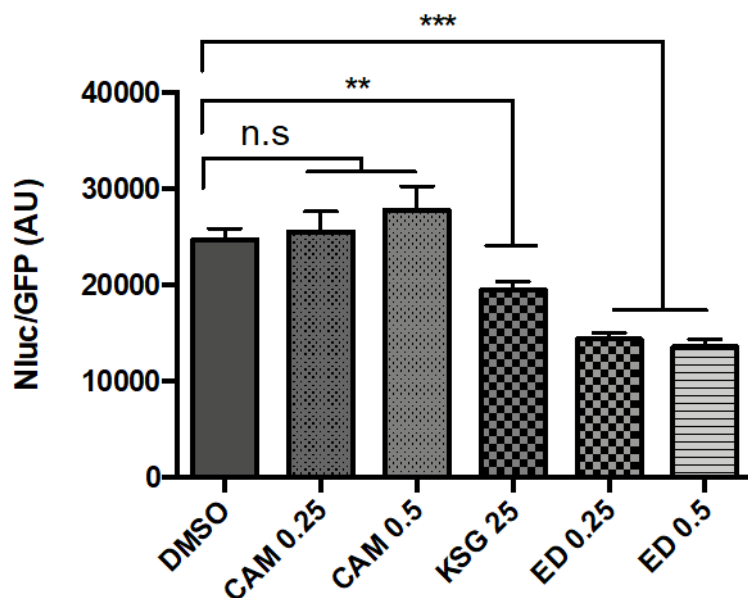


**Figure 1 Supplemental Figure 3**



**Fig. 1 Supplemental Fig. 3. The 30S initiation inhibitors edeine and kasugamycin decrease Asp-tRNA<sup>Asn</sup> mistranslation rates.** Mistranslation was measured in Msm by the Nluc/GFP reporter as in Fig. 1 (A-C). SubMIC concentrations of antibiotics – chloramphenicol (CAM – 0.25-0.5  $\mu$ g/ml), kasugamycin (Ksg, 25  $\mu$ g/ml) and edeine (ED – 0.25-0.5  $\mu$ M) were used in the assay. \*\*p<0.01, \*\*\*p<0.001, n.s. no significant difference by Student's t-test.