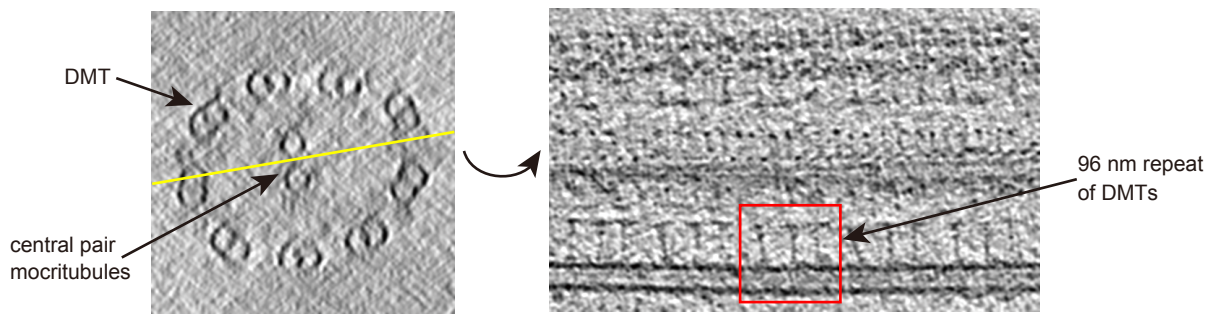
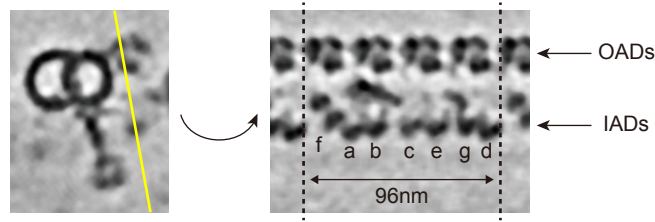


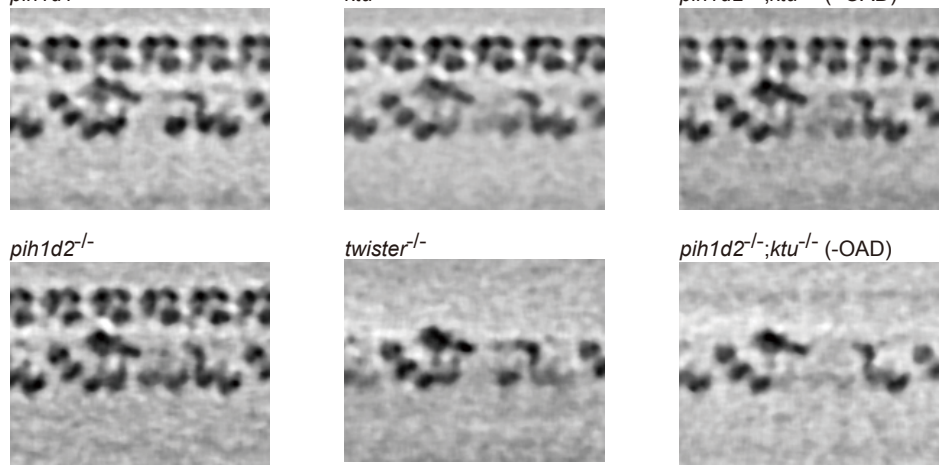
**A** zebrafish WT sperm axoneme



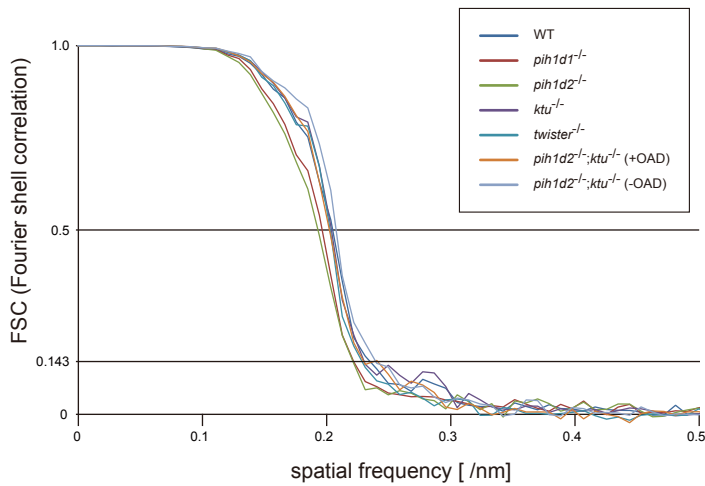
**B** WT



**C** *pih1d1*<sup>-/-</sup>



**D**



**E**

	Number of Particles	Resolution [Å]
WT	441	42.5
<i>pih1d1</i> <sup>-/-</sup>	512	45.0
<i>pih1d2</i> <sup>-/-</sup>	378	45.1
<i>ktu</i> <sup>-/-</sup>	557	43.4
<i>twister</i> <sup>-/-</sup>	510	43.7
<i>pih1d2</i> <sup>-/-</sup> ; <i>ktu</i> <sup>-/-</sup> (+OAD)	458	43.4
<i>pih1d2</i> <sup>-/-</sup> ; <i>ktu</i> <sup>-/-</sup> (-OAD)	551	41.7