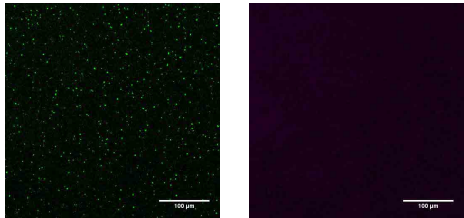
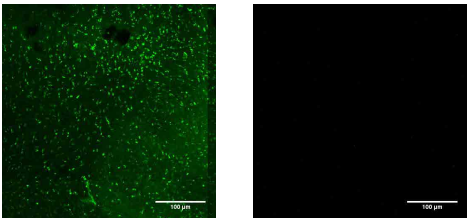


Field specimens: L opsin, S opsin, Merged

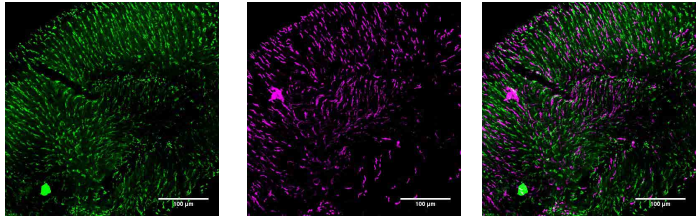
Molossus molossus



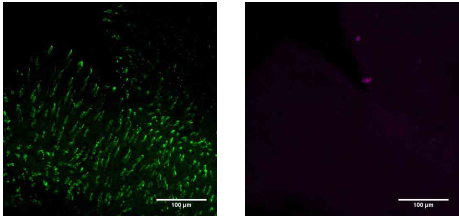
Eptesicus fuscus



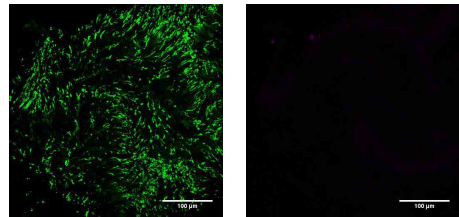
Pteronotus quadridens



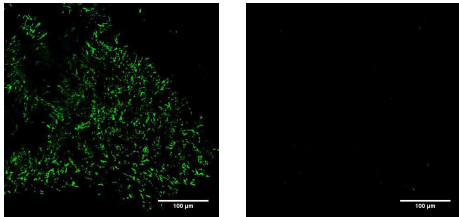
Pteronotus davyi



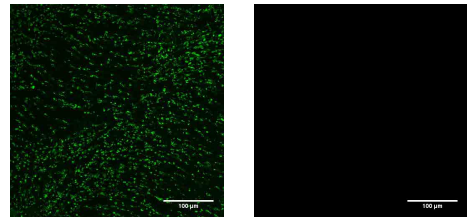
Pteronotus parnellii



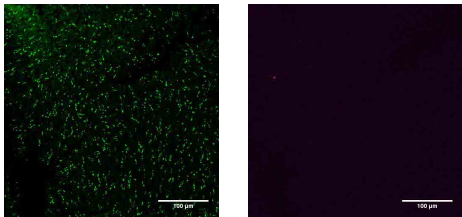
Mormoops blainvillei



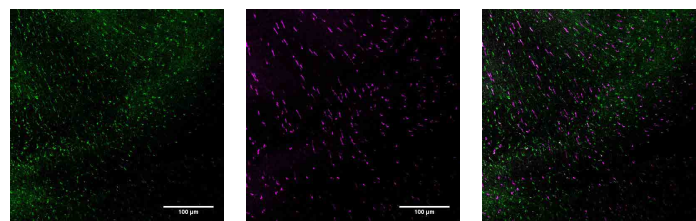
Macrotus waterhousii



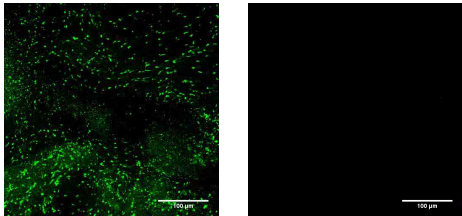
Desmodus rotundus



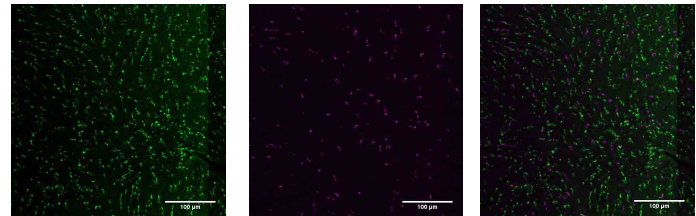
Chrotopterus auritus



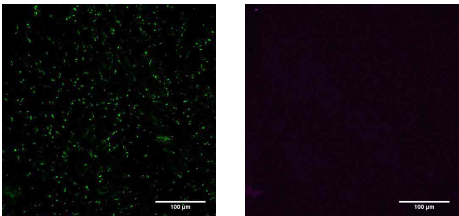
Trachops cirrhosus



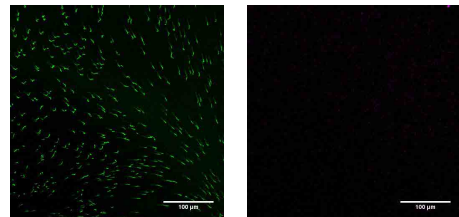
Phyllostomus discolor



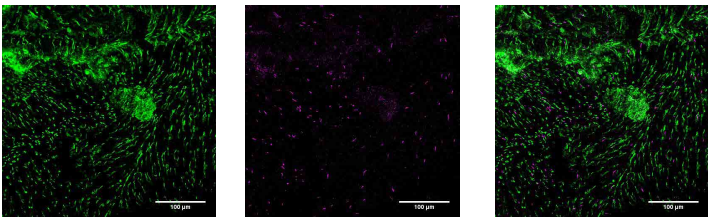
Gardnerycteris crenulatum



Monophyllus redmani

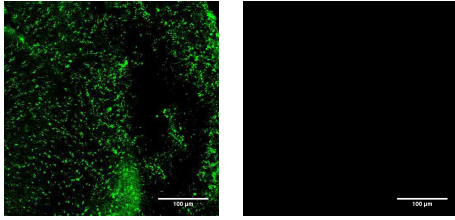


Glossophaga soricina

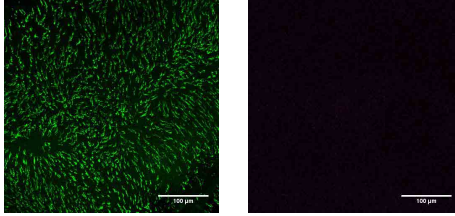


Field specimens 2: L opsin, S opsin, Merged

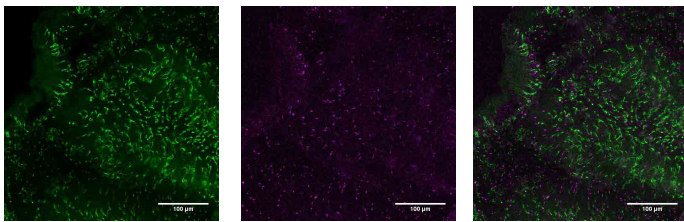
Brachyphilla nana



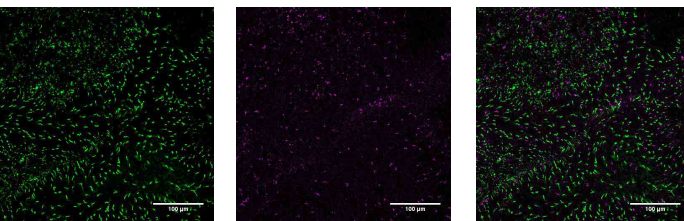
Erophylla sezekorni



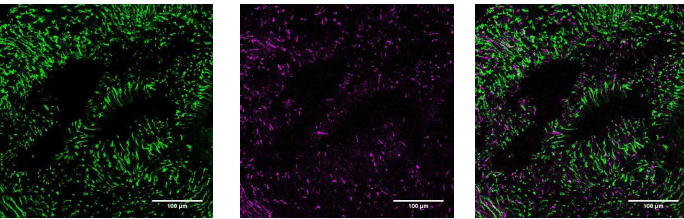
Carollia sowelli



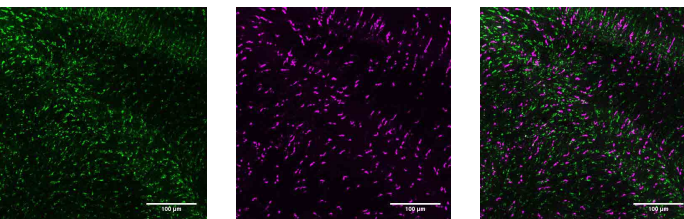
Sturnira lilium



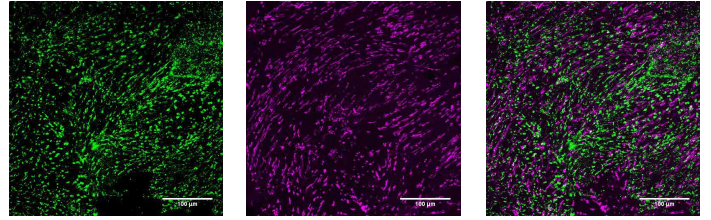
Phyllops falcatus



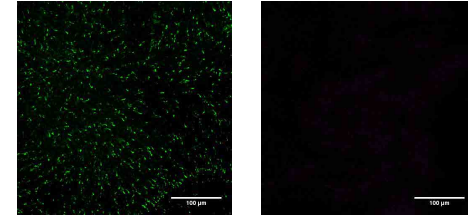
Artibeus lituratus



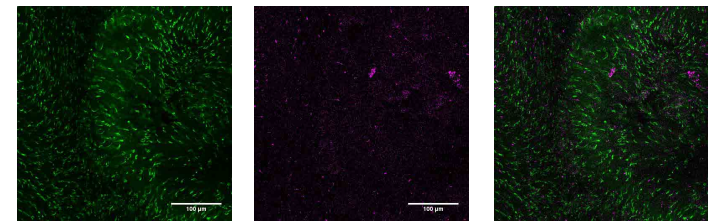
Phyllonycteris poeyi



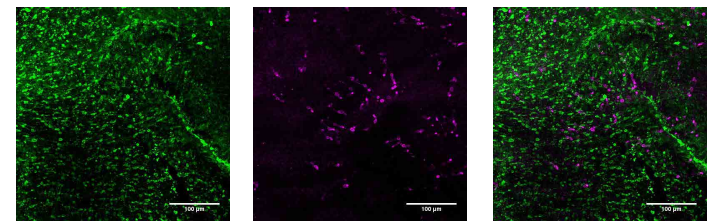
Erophylla bombifrons



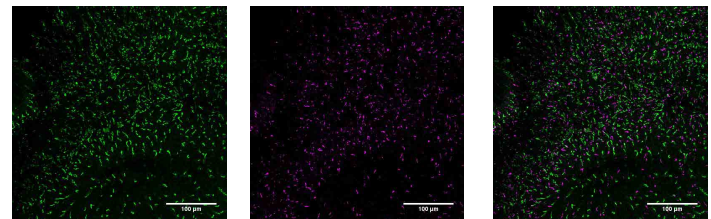
Carollia perspicillata



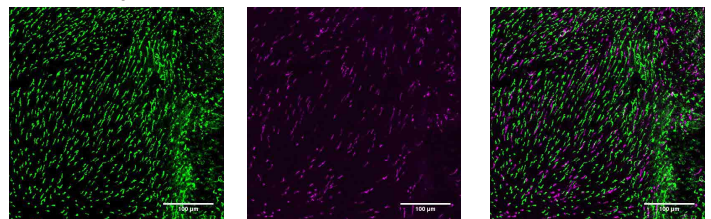
Uroderma bilobatum



Artibeus jamaicensis

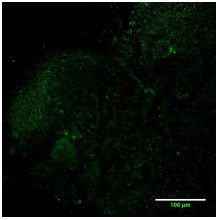


Artibeus phaeotis



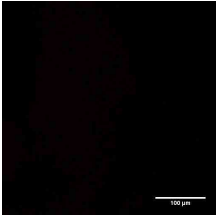
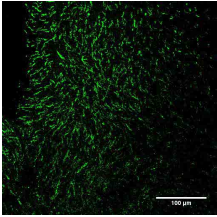
Museum specimens: L opsin, S opsin, Merged

Tadarida brasiliensis

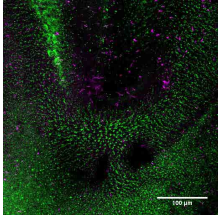
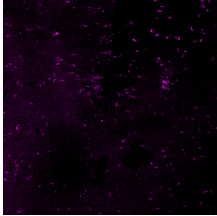
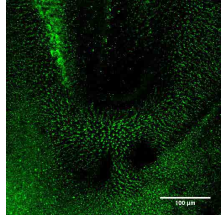


n.d.

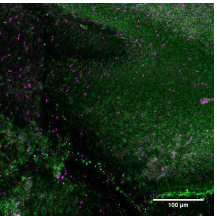
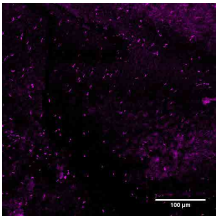
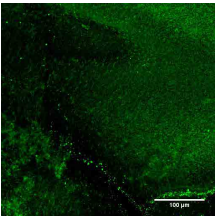
Chilonatalus micropus



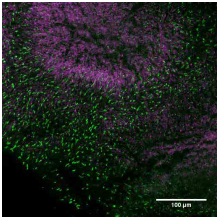
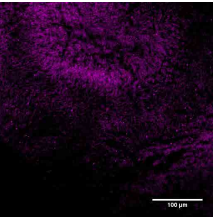
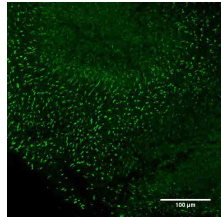
Saccopteryx bilineata



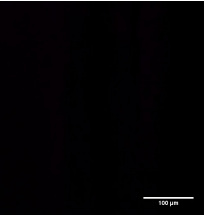
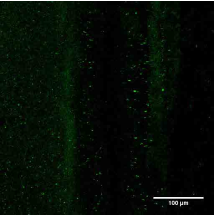
Saccopteryx leptura



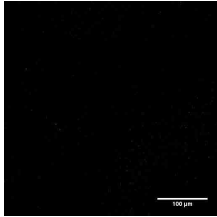
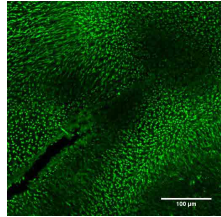
Noctilio leporinus



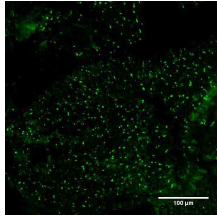
Diaemus youngi



Tonotia saurophila

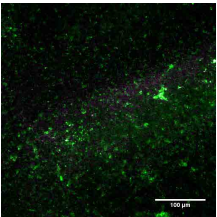
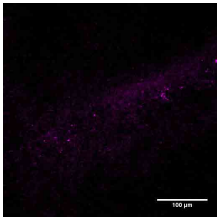
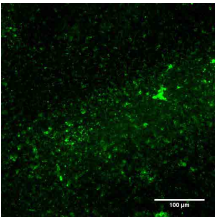


Phyllostomus hastatus

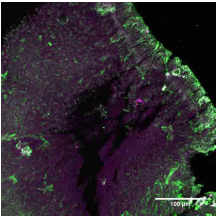
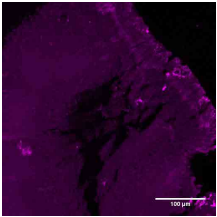
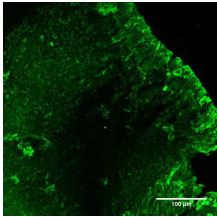


n.d.

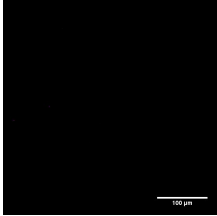
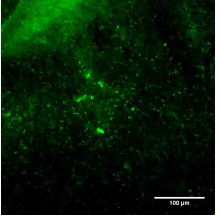
Phyllostomus elongatus



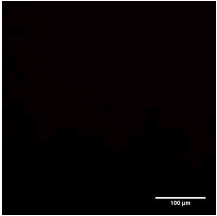
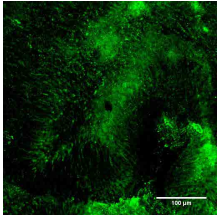
Anoura geoffroyi



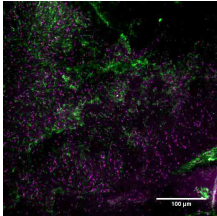
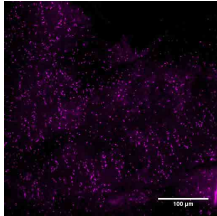
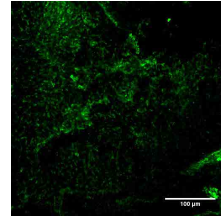
Lonchophylla robusta



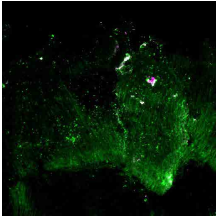
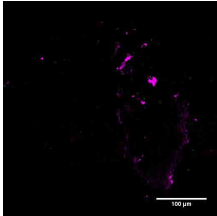
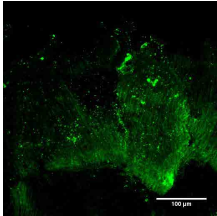
Carollia brevicauda



Rhinophylla fischerae

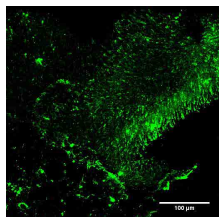


Rhinophylla pumilio



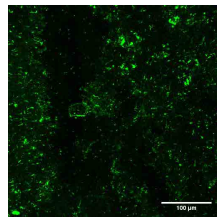
Museum specimens 2: L opsin, S opsin, Merged

Stunira ludovici



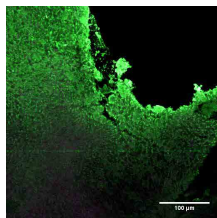
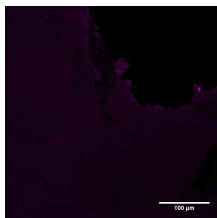
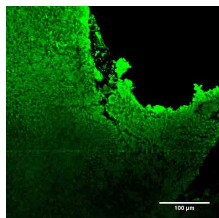
n.d.

Stunira tildae

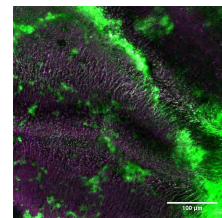
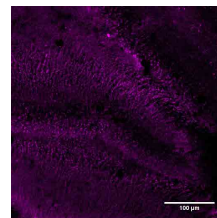
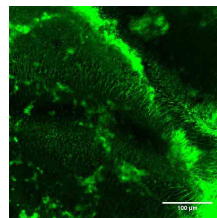


n.d.

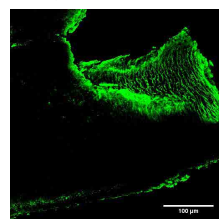
Vampyroides caraccioli



Platyrrhinus aurarius

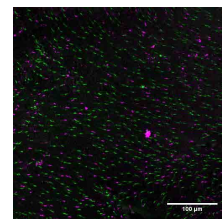
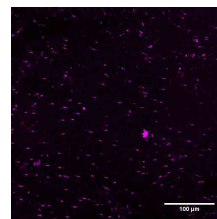
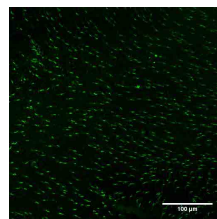


Platyrrhinus dorsalis

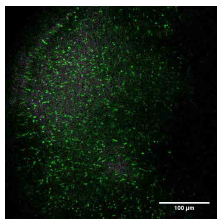
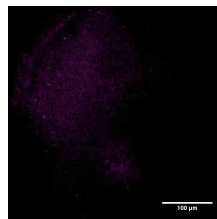
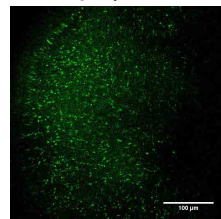


n.d.

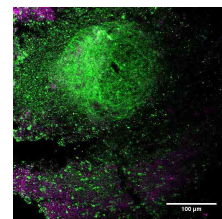
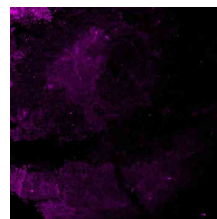
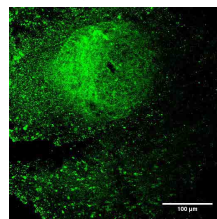
Platyrrhinus hellerii



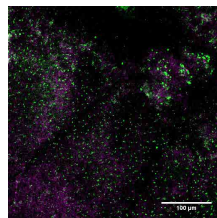
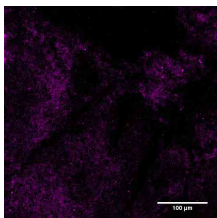
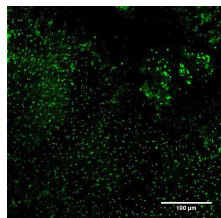
Mesophylla macconnelli



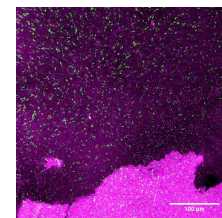
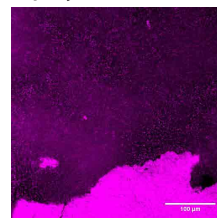
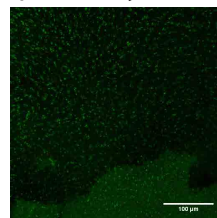
Vampyriscus bidens



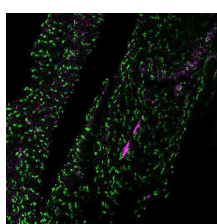
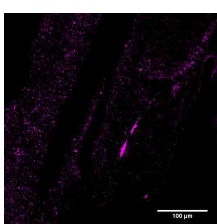
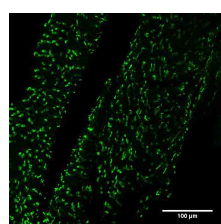
Enchisthenes hartii



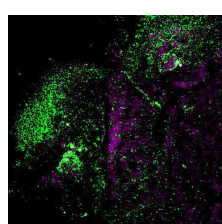
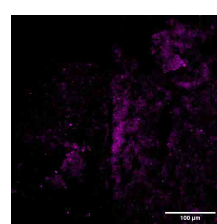
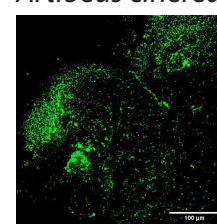
Sphaeronycteris toxophyllum



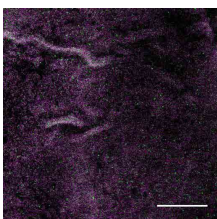
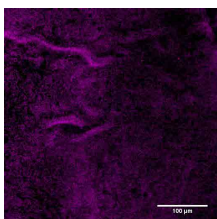
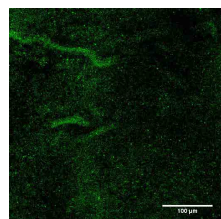
Centurio senex



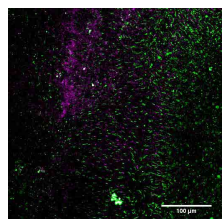
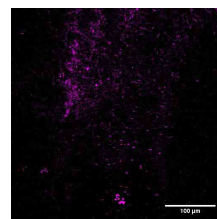
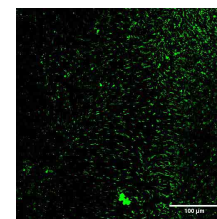
Artibeus cinereus



Artibeus concolor



Artibeus fraterculus



Artibeus planirostris

