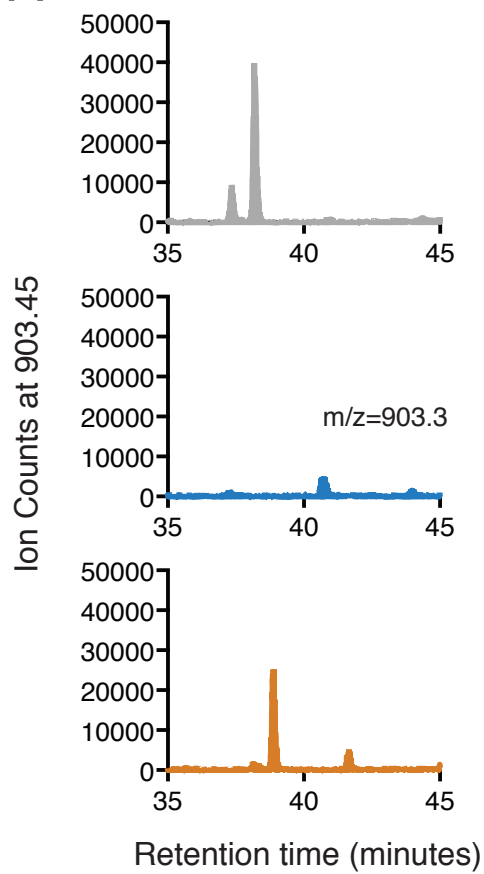
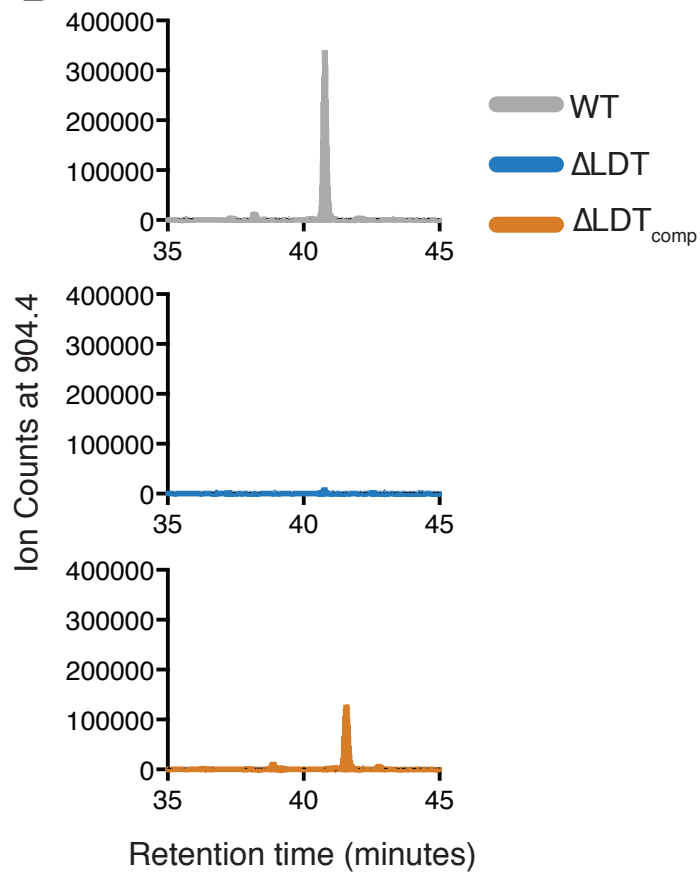


A



B



C

Donor Stem	Acceptor Stem	amidated sites	Calculated m/z [M+H] ¹⁺	Observed m/z [M+H] ¹⁺
tripeptide	tripeptide	0		ND
		1		ND
		2		ND
		3	904.43	904.42
		4	903.45	903.44
tripeptide	tetrapeptide	0		ND
		1		ND
		2		ND
		3	975.47	975.45
		4	974.49	974.47

D

