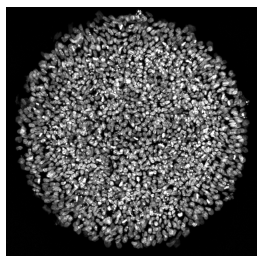
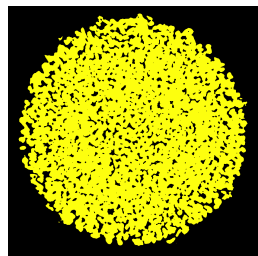


A

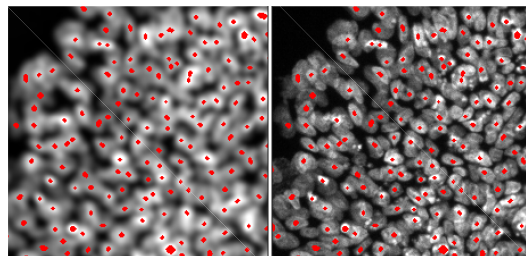
Stitched colony image
(nuclear channel)



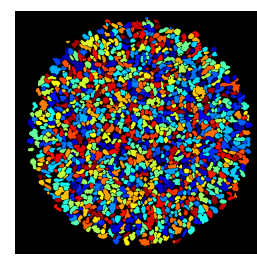
Foreground mask



Seeding



Watershed

**B**

+ BMP4 (50 ng/mL)

Pre-stimulus

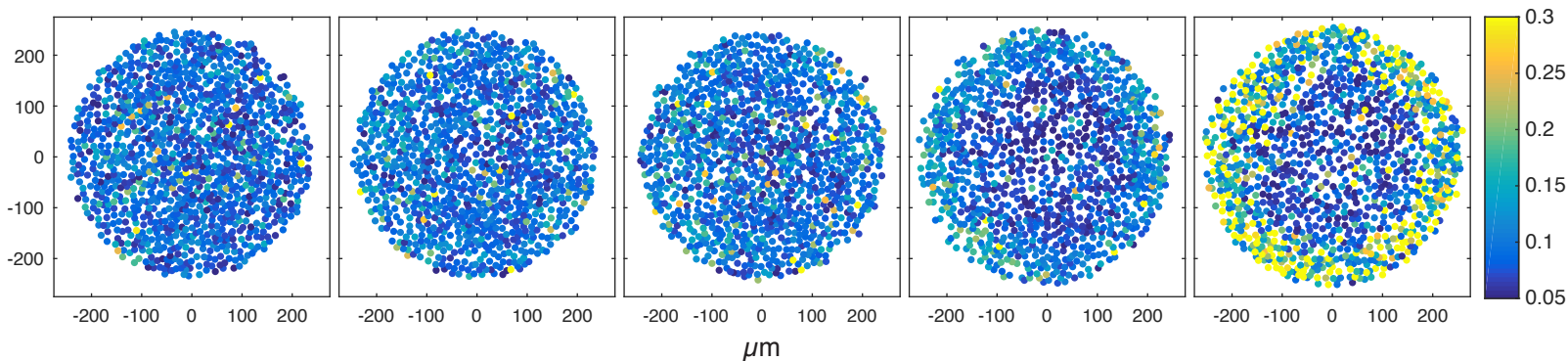
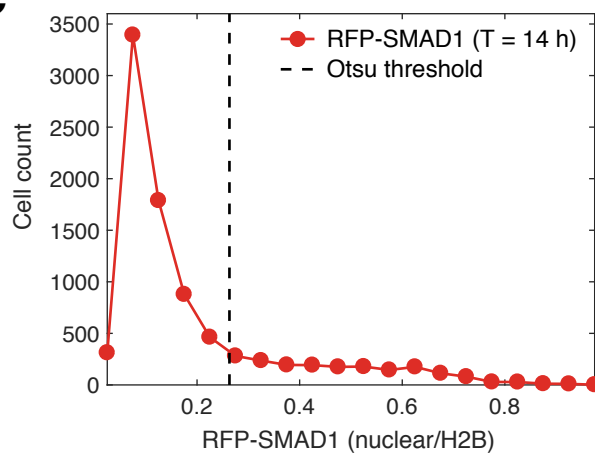
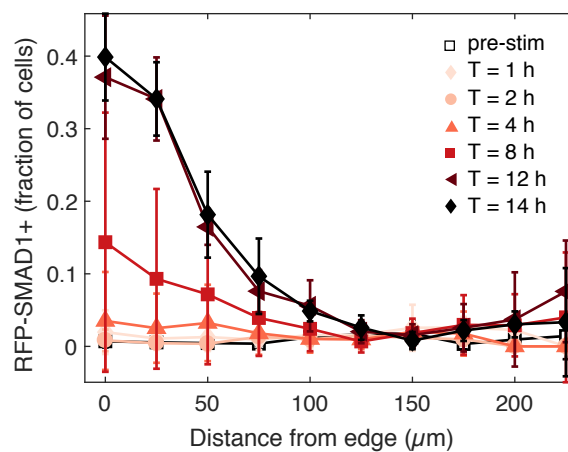
T = 1 h

T = 2 h

T = 8 h

T = 12 h

SMAD1
(nuclear)

**C****D****E**

+ ACTIVIN (10 ng/mL)

Pre-stimulus

T = 1 h

T = 2 h

T = 4 h

T = 12 h

SMAD2
(nuc-to-cyto)

