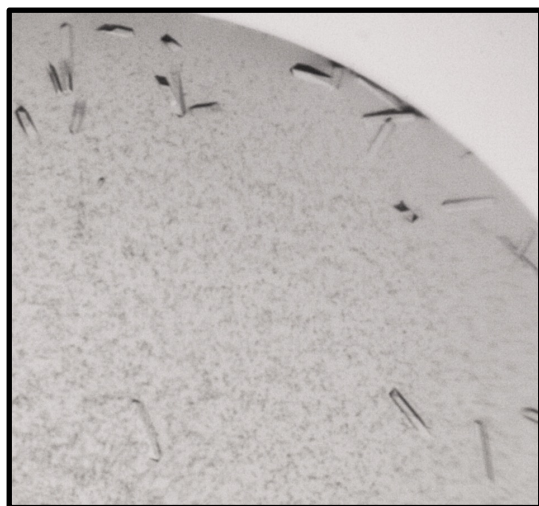
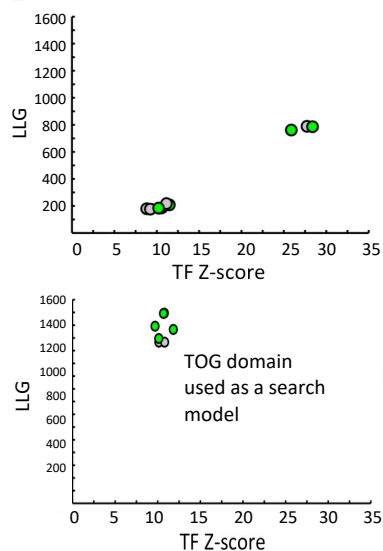
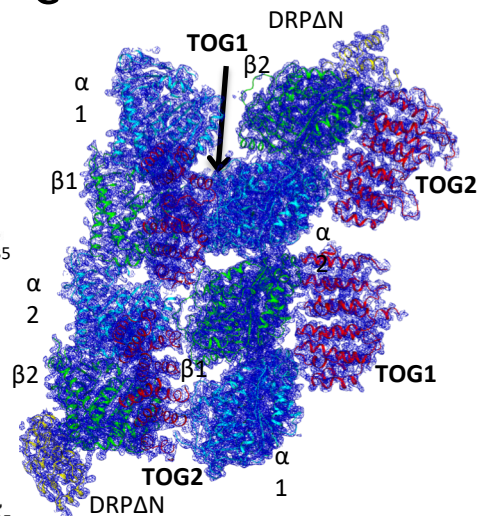
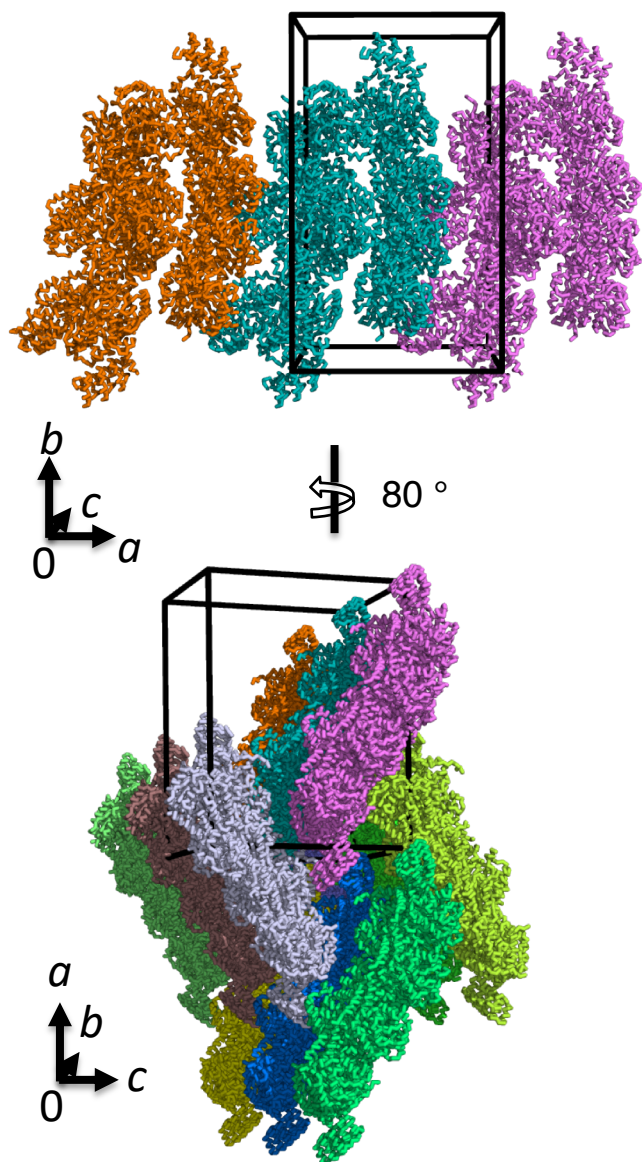
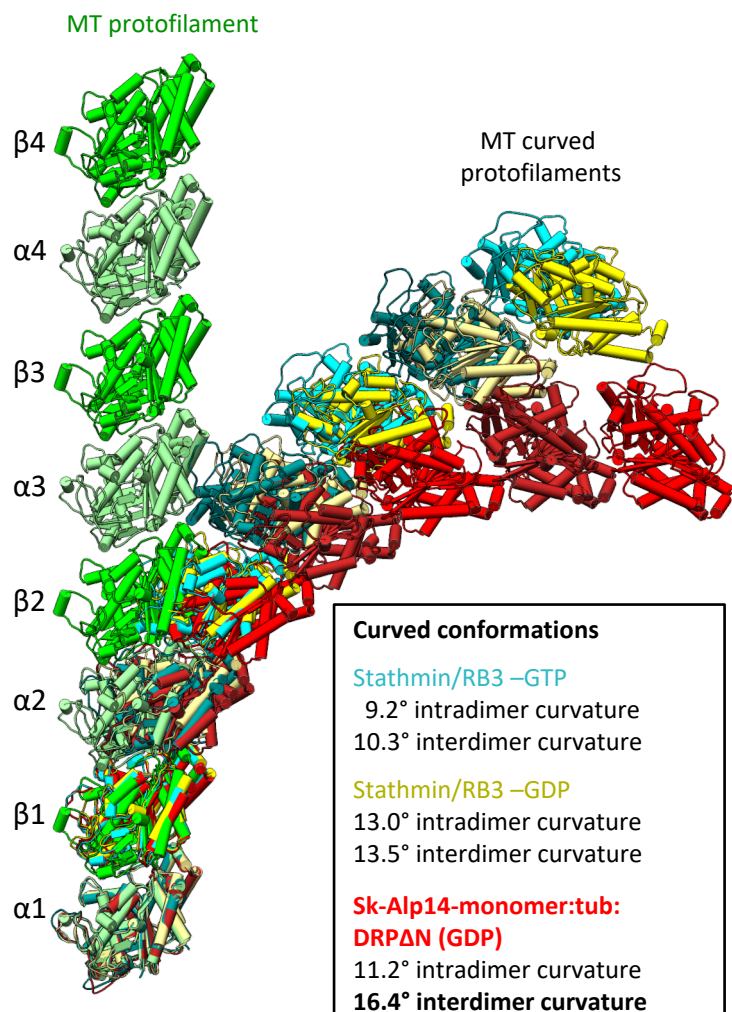


A Sk-Alp14-monomer:tubulin:DRPΔN crystals**B** Molecular Replacement**C** Map of 1:2:1 complex**D** Packing in the crystallographic unit cell**E** $\alpha\beta$ -tubulins are highly curved in the Sk-Alp14-monomer:tubulin:DRPΔN structure**Curved conformations****Stathmin/RB3 -GTP**

9.2° intradimer curvature
10.3° interdimer curvature

Stathmin/RB3 -GDP

13.0° intradimer curvature
13.5° interdimer curvature

Sk-Alp14-monomer:tub: DRPΔN (GDP)

11.2° intradimer curvature
16.4° interdimer curvature