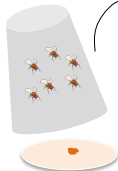


A

Set up crosses



Egg collection

A'Dechoriation+
10% bleach**A''**

Wash + transfer

**A'''**

Sterile 25°C incubator

**A''''****Antibiotics:**

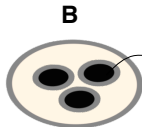
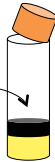
Pen/Strep 1.7 ml in 100 ml

Ampicillin: 1/500

Kanamycin: 1/1000

Chloramphenicol: 1/1000

Antimycotic Nipagin*: 0.15 g per 100 ml

B'*Aspergillus niger* plateSet up crosses,
egg collection**B''****Plates:**

Potato agar + ddH2O

Autoclave

Antibiotics

(Pen/Strep, Ampicillin, Kanamycin, Chloramphenicol)