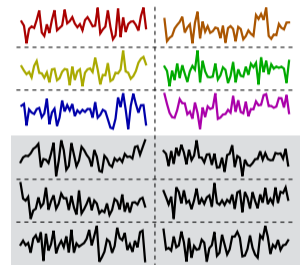


All Retinotopy

12 scans
3.2 minutes each



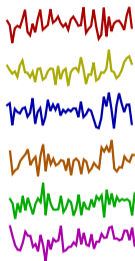
Validation Dataset

6 scans, 30 min. (×1)



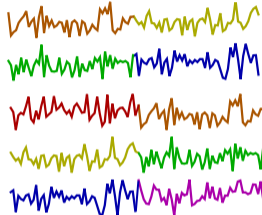
Training Datasets

1 scan (×6)
3.2 min/set

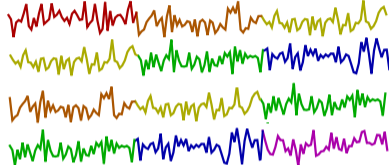


• • •

2 scans (×5)
6.4 min/set



3 scans (×4)
9.6 min/set



4 scans, 12.8 min. each (×3)

5 scans, 16 min. each (×2)

6 scans, 19.2 min. each (×1)