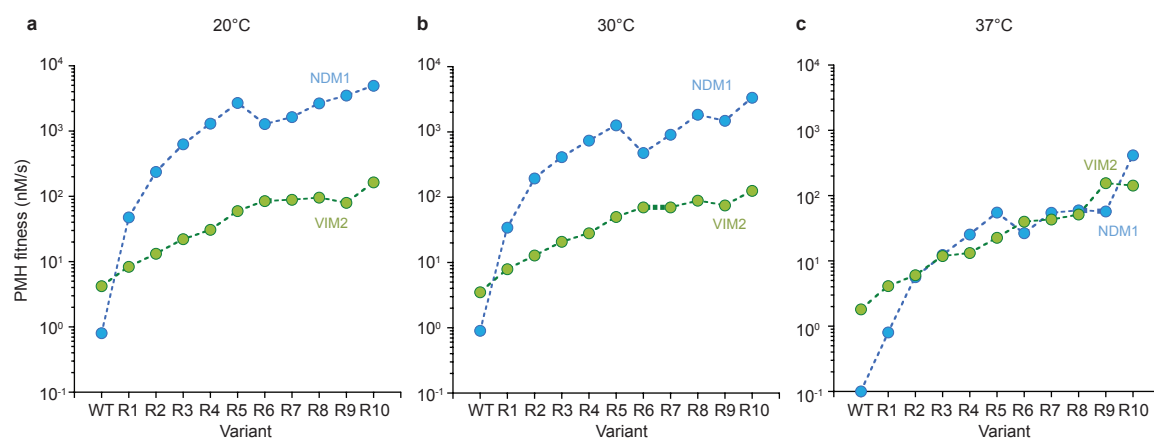


**Figure 3-figure supplement 3**



**Figure 3-figure supplement 3.** Effect of expression temperature on cell lysate PMH fitness (cell lysate activity in nM/s). Variants of NDM1 (blue) and VIM2 (green) were expressed at (A) 20°C, (B) 30°C, and (C) 37°C. Cell lysate preparation and PMH fitness measurement were performed identically for all expression temperatures.