

Figure 6-figure supplement 4

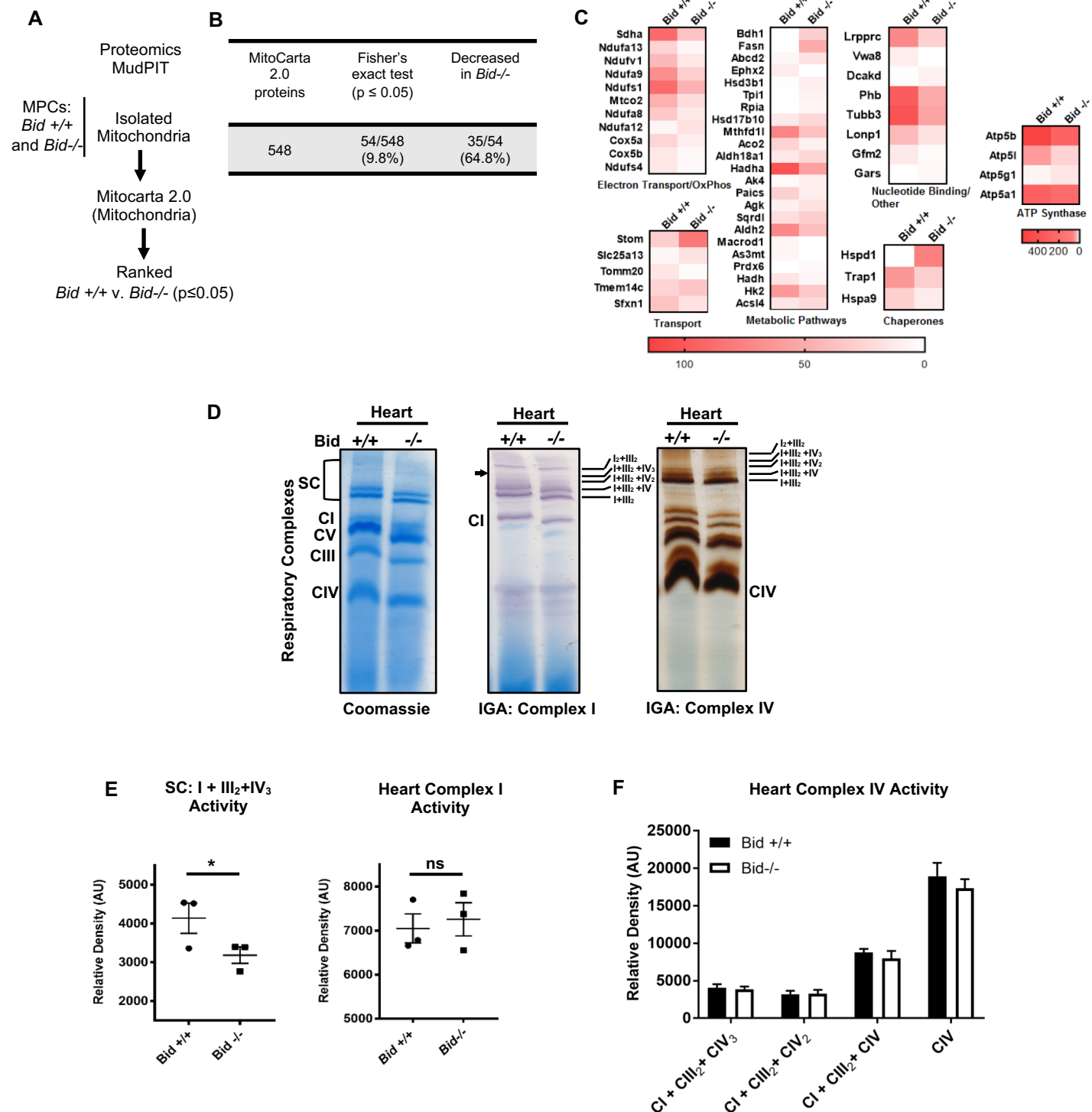


Figure 6-figure supplement 4. *Bid* ^{-/-} MPC mitochondria have a decreased CI proteins and decreased activity, but no difference in CIV activity.

(A) MudPIT analysis workflow on isolated MPC mitochondria. (B) Summary of results revealing 54 significantly different mitochondrial proteins different by Fisher's exact test ($p < 0.05$). (C) Heat map highlights spectral count differences between identified cristae-related proteins. Scale indicates no spectral counts (white) to high spectral counts (red). (D) Representative Coomassie stained gradient native gel of equivalent amounts of *Bid* ^{+/+} and *Bid* ^{-/-} heart mitochondria protein (left), in-gel activity (IGA) assay for Complex I (middle, arrow denotes significantly different complex activity), and in-gel activity for Complex IV (right). CI=Complex I, CIII = Complex III, CIV= Complex IV, CV=Complex V, and SC=supercomplexes. (E) Quantitation of in-gel activity assay for CI respiratory complexes in *Bid* ^{+/+} and *Bid* ^{-/-} hearts, arbitrary units, $n=3$ per gel (representative of 4 independent runs). (F) Quantitation of in-gel activity assay for all CIV respiratory complexes in *Bid* ^{+/+} and *Bid* ^{-/-} hearts, arbitrary units, $n=3$ per gel. P-values were determined by unpaired Student's t-test for E. Error bars indicate \pm SEM for all data. ns=not significant, * $p < 0.05$