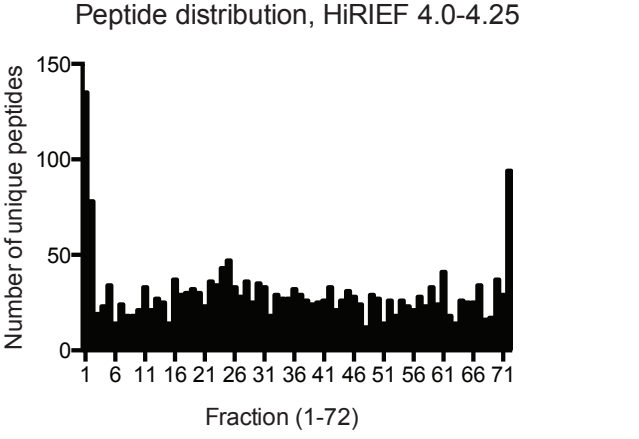
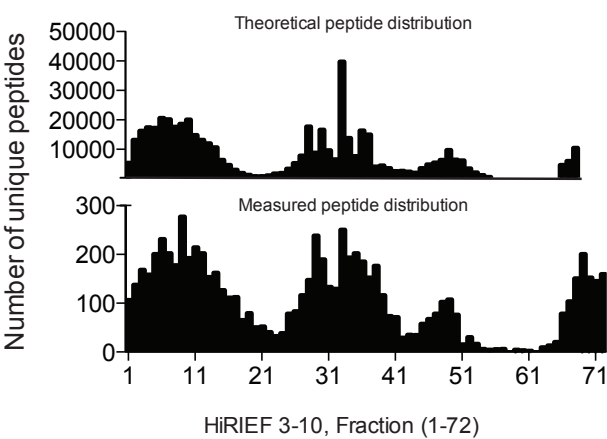


A



B

sp|P07288|KLK3_HUMAN Prostate-specific antigen OS=Homo sapiens GN=KLK3 PE=1 SV=2

R.LSEPAELTDAVK.V [125, 136]

636.8377++ (dotp 0.57, rdotp 0.99, total ratio 0.49)

P [y9] - 943.5095+ (rank 1)[1] (ratio 0.41)

E [y7] - 775.4196+ (rank 5)[5] (ratio 0.53)

L [y6] - 646.3770+ (rank 4)[4] (ratio 0.88)

T [y5] - 533.2930+ (rank 2)[3] (ratio 0.5)

P [y9] - 472.2584++[2] (ratio 0.52)

640.8448++ (heavy) (dotp 0.6)

P [y9] - 951.5237+ (rank 1)[1]

E [y7] - 783.4338+ (rank 5)[4]

L [y6] - 654.3912+ (rank 4)[5]

T [y5] - 541.3072+ (rank 2)[3]

P [y9] - 476.2655++[2]

